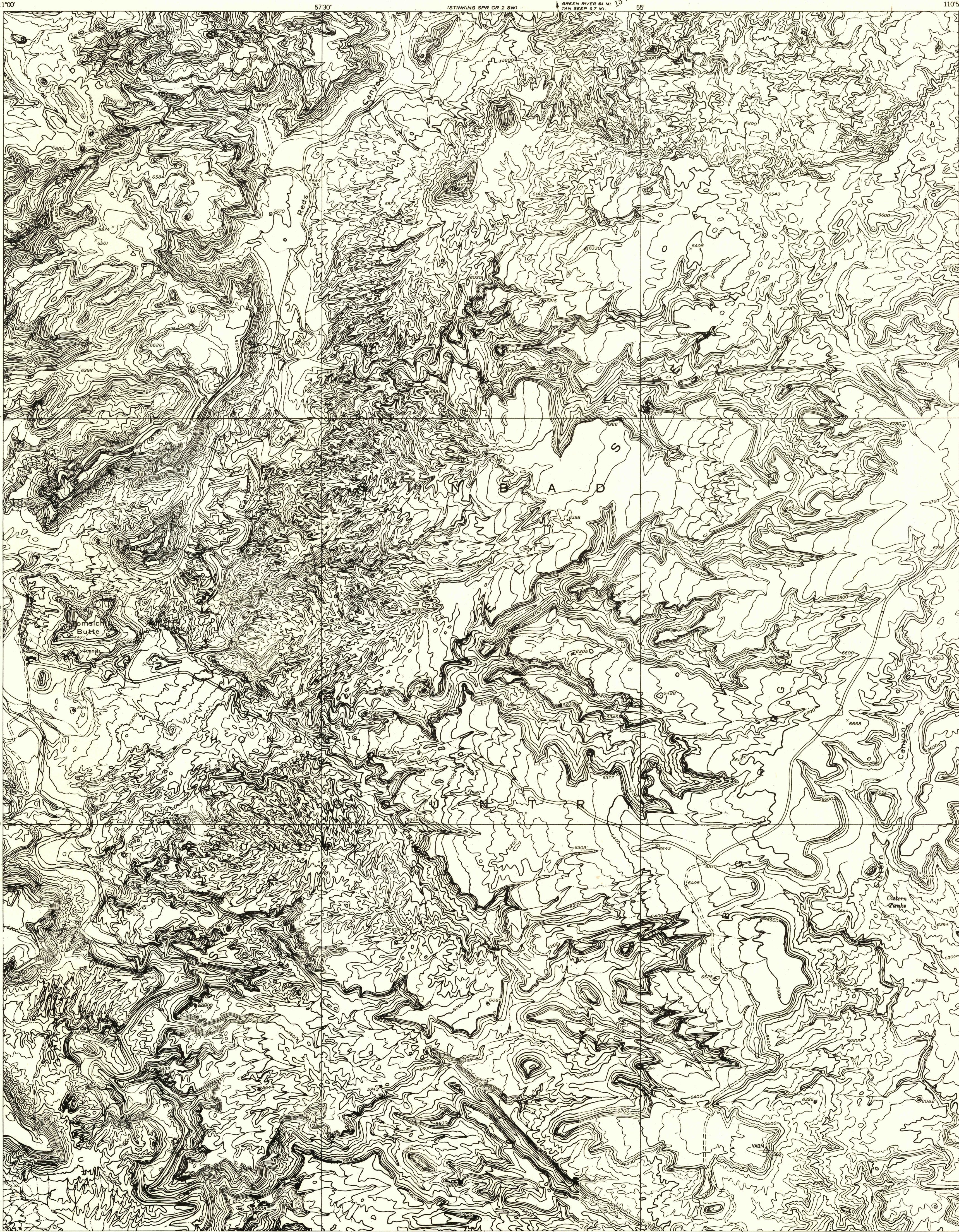


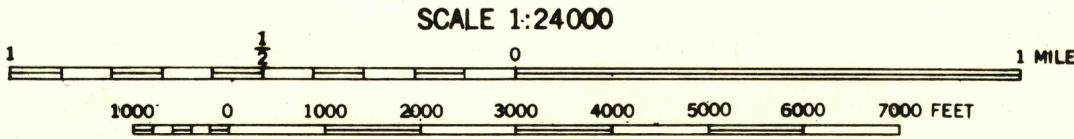
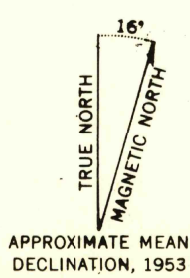
DEPARTMENT OF THE INTERIOR
GEOLOGICAL SURVEY

STINKING SPRING CREEK 3 NW QUADRANGLE
UTAH-EMERY CO.

Preliminary edition
Pending completion of 1:62,500 scale
15 minute maps covering this area



Mapped by the Geological Survey 1953
Topography by multiplex methods from
aerial photographs taken 1951



USGS
Historical File
Topographic Division

ROAD CLASSIFICATION
Improved ——— Unimproved - - - - -

CONTOUR INTERVAL 40 FEET
DATUM IS MEAN SEA LEVEL

STINKING SPRING CREEK 3 NW, UTAH
N3837.5-W1052.5/7.5

JUN 22 1954