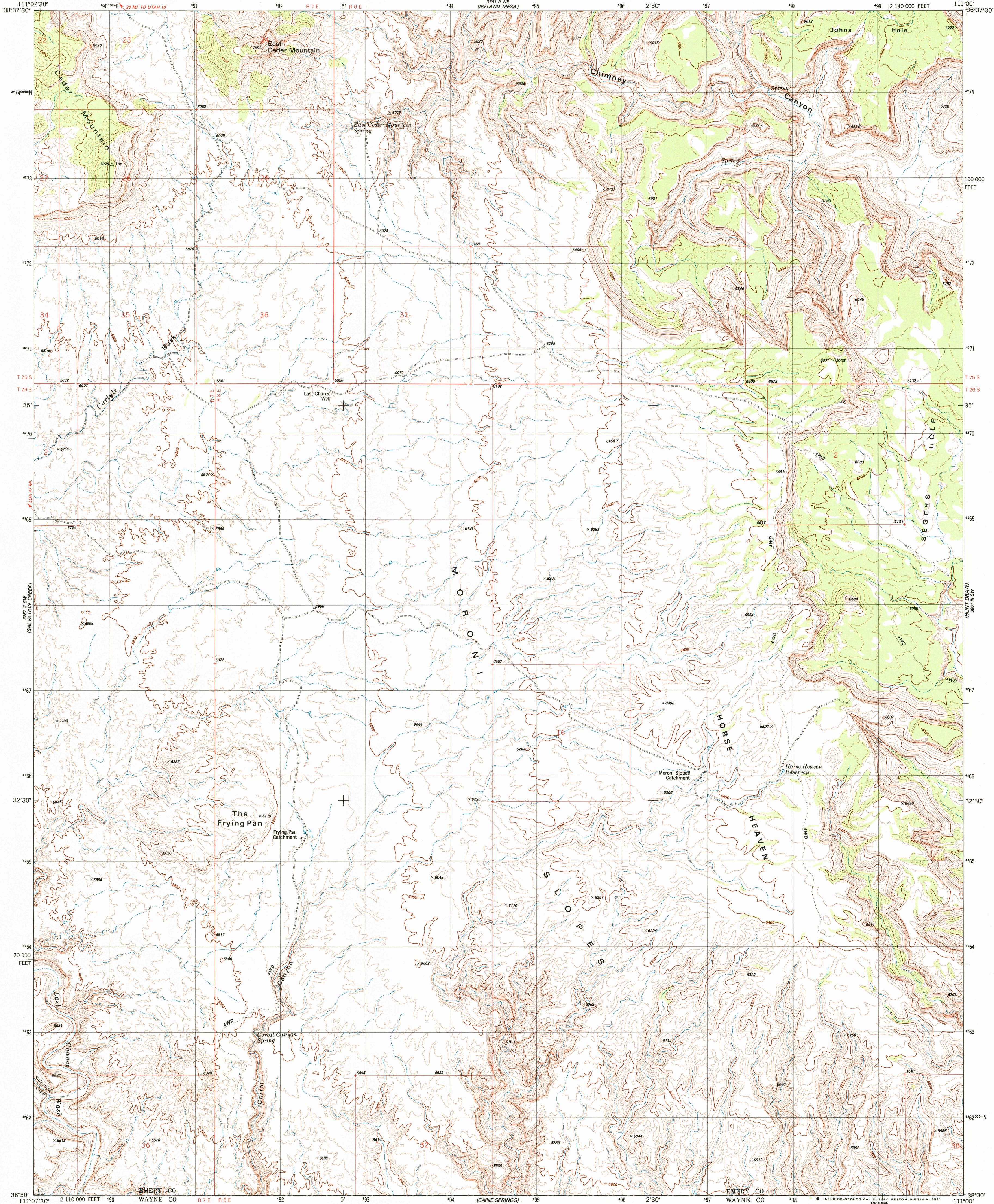


UNITED STATES
DEPARTMENT OF THE INTERIOR
GEOLOGICAL SURVEY

THE FRYING PAN QUADRANGLE
UTAH-EMERY CO.
7.5 MINUTE SERIES (TOPOGRAPHIC)



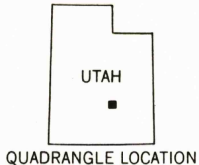
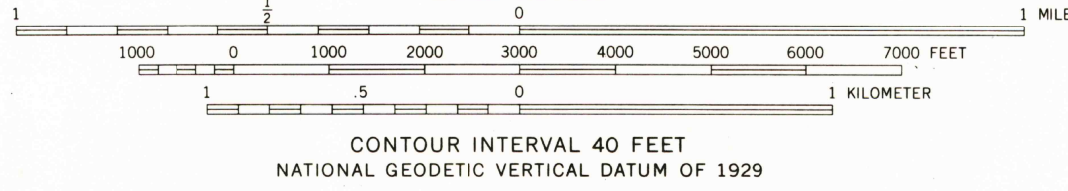
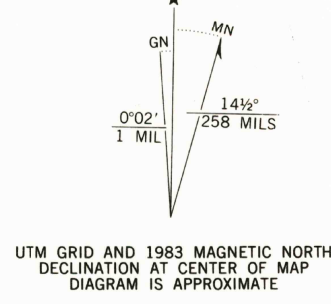
Mapped, edited, and published by the Geological Survey

Control by USGS and NOS/NOAA

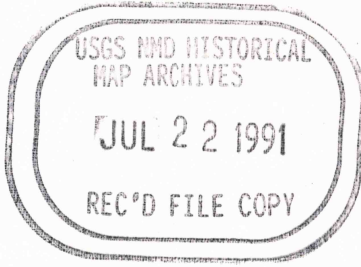
Topography by photogrammetric methods from aerial photographs taken 1974. Field checked 1977. Revised 1983
Projection and 10,000-foot grid ticks: Utah coordinate system, central zone (Lambert conformal conic)
1000-meter Universal Transverse Mercator grid ticks, zone 12

The difference between 1927 North American Datum and North American Datum of 1983 (NAD 83) for 7.5 minute intersections is given in USGS Bulletin 1875. The NAD 83 is shown by dashed corner ticks

Where omitted, land lines have not been established



ROAD CLASSIFICATION	
Primary highway, hard surface	Light-duty road, hard or improved surface
Secondary highway, hard surface	Unimproved road
Interstate Route	U. S. Route
	State Route



THE FRYING PAN, UTAH
38111-E1-TF-024

1983

DMA 3761 II SE-SERIES V897

THIS MAP COMPLIES WITH NATIONAL MAP ACCURACY STANDARDS
FOR SALE BY U. S. GEOLOGICAL SURVEY, DENVER, COLORADO 80225, OR RESTON, VIRGINIA 22092
A FOLDER DESCRIBING TOPOGRAPHIC MAPS AND SYMBOLS IS AVAILABLE ON REQUEST