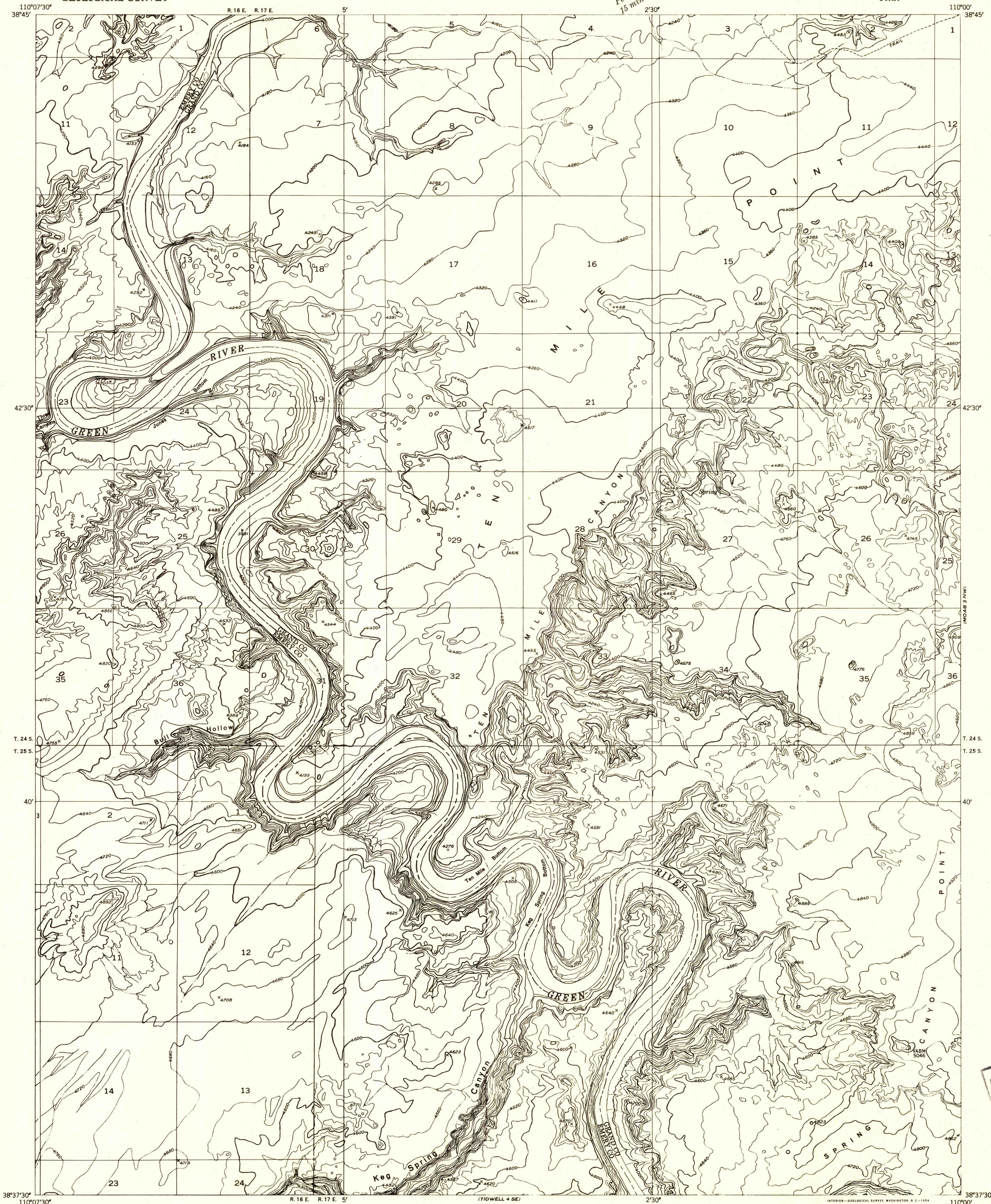


DEPARTMENT OF THE INTERIOR  
GEOLOGICAL SURVEY

Preliminary edition  
Pending completion of 1:62,500 scale  
15 minute maps covering this area

TIDWELL 4 NE QUADRANGLE  
UTAH



FILE COPY  
Historical File  
Topographic Division

FILE COPY  
Historical File  
Topographic Division

Mapped by the Geological Survey 1952  
Topography by multiplex methods from  
aerial photographs taken 1951

TRUE NORTH  
MAGNETIC NORTH  
APPROXIMATE MEAN  
DECLINATION, 1951

SCALE 1:24000  
1 0 1000 2000 3000 4000 5000 6000 7000 FEET  
1 MILE

CONTOUR INTERVAL 40 FEET  
DATUM IS MEAN SEA LEVEL

USGS  
Historical File  
Topographic Division

ROAD CLASSIFICATION  
Improved ——— Unimproved - - - - -

TIDWELL 4 NE, UTAH  
N3837.5-W11000/7.5

MAY 5 1954

2095