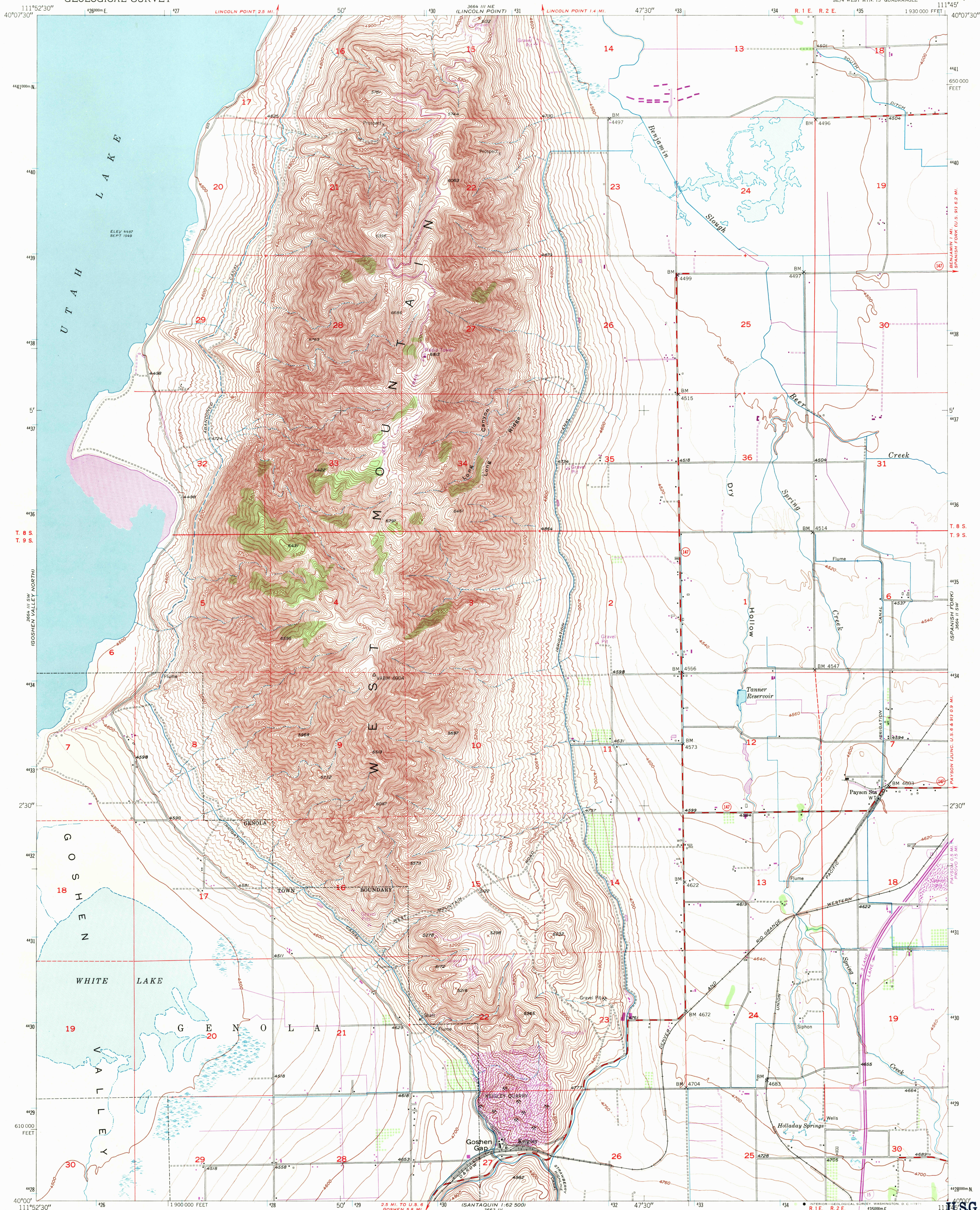
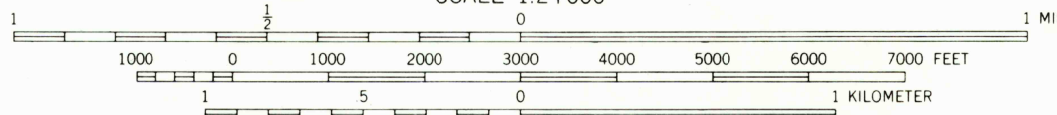
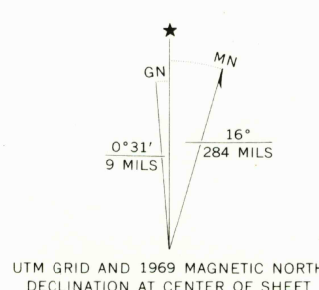


UNITED STATES  
DEPARTMENT OF THE INTERIOR  
GEOLOGICAL SURVEY

WEST MOUNTAIN QUADRANGLE  
UTAH-UTAH CO.  
7.5 MINUTE SERIES (TOPOGRAPHIC)  
SE/4 WEST MTN. 15' QUADRANGLE



Mapped, edited, and published by the Geological Survey  
Control by USGS, USC&GS, USBR, and State of Utah  
Topography from aerial photographs by multiplex methods  
and by plane-table surveys 1950  
Aerial photographs taken 1947  
Polyconic projection. 1927 North American datum  
10,000-foot grid based on Utah coordinate system,  
central zone  
1000-meter Universal Transverse Mercator grid ticks,  
zone 12, shown in blue  
Revisions shown in purple compiled from aerial photographs  
taken 1969. This information not field checked



CONTOUR INTERVAL 20 FEET  
DOTTED LINES REPRESENT HALF-INTERVAL CONTOURS  
DATUM IS MEAN SEA LEVEL

THIS MAP COMPLIES WITH NATIONAL MAP ACCURACY STANDARDS  
FOR SALE BY U. S. GEOLOGICAL SURVEY, DENVER, COLORADO 80225, OR WASHINGTON, D. C. 20242  
A FOLDER DESCRIBING TOPOGRAPHIC MAPS AND SYMBOLS IS AVAILABLE ON REQUEST



ROAD CLASSIFICATION  
Heavy-duty ——— Light-duty ———  
Medium-duty ——— Unimproved ———  
U. S. Route ——— State Route ———  
Interstate Route ———

USGS  
Historical File  
Topographic Division

WEST MOUNTAIN, UTAH  
SE/4 WEST MTN. 15' QUADRANGLE  
N4000—W11445/7.5

1950  
PHOTOREVISED 1969  
AMS 3664 III SE—SERIES V897

U.S.G.S.  
FILE COPY  
TOPOGRAPHIC DIVISION

2780  
JAN 26 1971