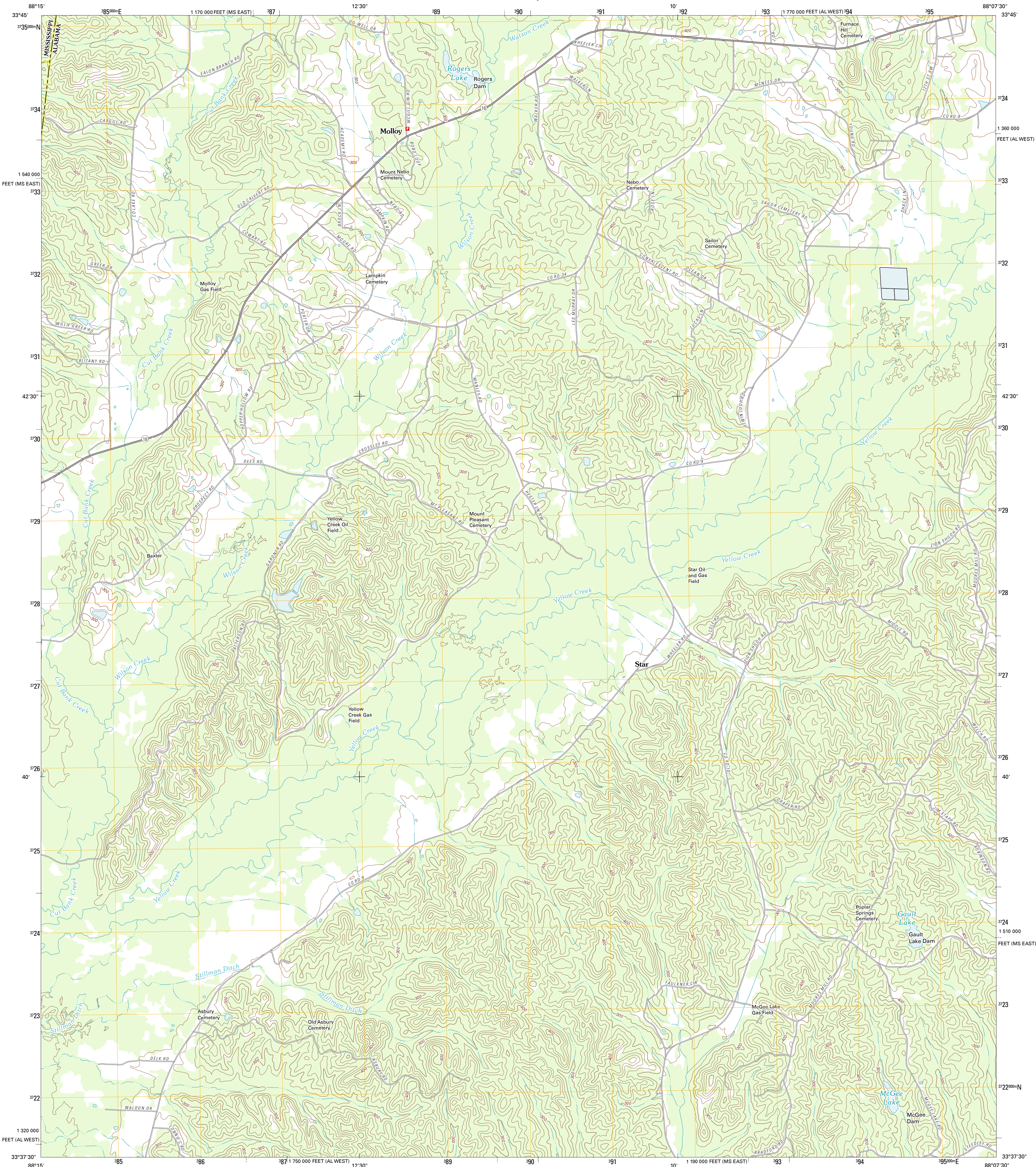




U.S. DEPARTMENT OF THE INTERIOR
U. S. GEOLOGICAL SURVEY



MILLPORT NW QUADRANGLE
ALABAMA-MISSISSIPPI
7.5-MINUTE SERIES

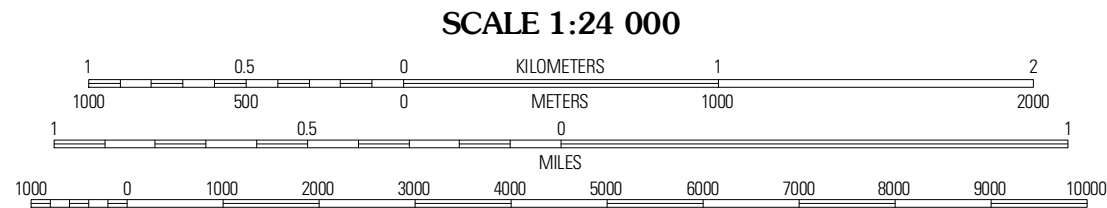


Produced by the United States Geological Survey
North American Datum of 1983 (NAD83)
Roads.....©2006-2011 TomTom
Names.....GNIS, 2011
Hydrography.....National Hydrography Dataset, 2009
Contours.....National Elevation Dataset, 2008
Boundaries.....Census, IBWC, IBC, USGS, 1972 - 2010

Imagery.....NAIP, June 2009
Roads.....©2006-2011 TomTom
Names.....GNIS, 2011
Hydrography.....National Hydrography Dataset, 2009
Contours.....National Elevation Dataset, 2008
Boundaries.....Census, IBWC, IBC, USGS, 1972 - 2010

UTM GRID AND 2011 MAGNETIC NORTH
DECLINATION AT CENTER OF SHEET

U.S. National Grid
100,000-m Square ID
CC
Grid Zone Designation
18S



CONTOUR INTERVAL 20 FEET
NORTH AMERICAN VERTICAL DATUM OF 1988
This map was produced to conform with the
National Geospatial Program US Topo Product Standard, 2011.
A metadata file associated with this product is draft version 0.6.0



QUADRANGLE LOCATION		
Amory SE	Sulligent SW	Vernon
Caledonia	Millport NW	Highway
Stems	Fernbank	Millport

ADJOINING 7.5 QUADRANGLES

ROAD CLASSIFICATION
Interstate Route
US Route
Ramp
State Route
Local Road
4WD
US Route
State Route

MILLPORT NW, AL-MS
2011