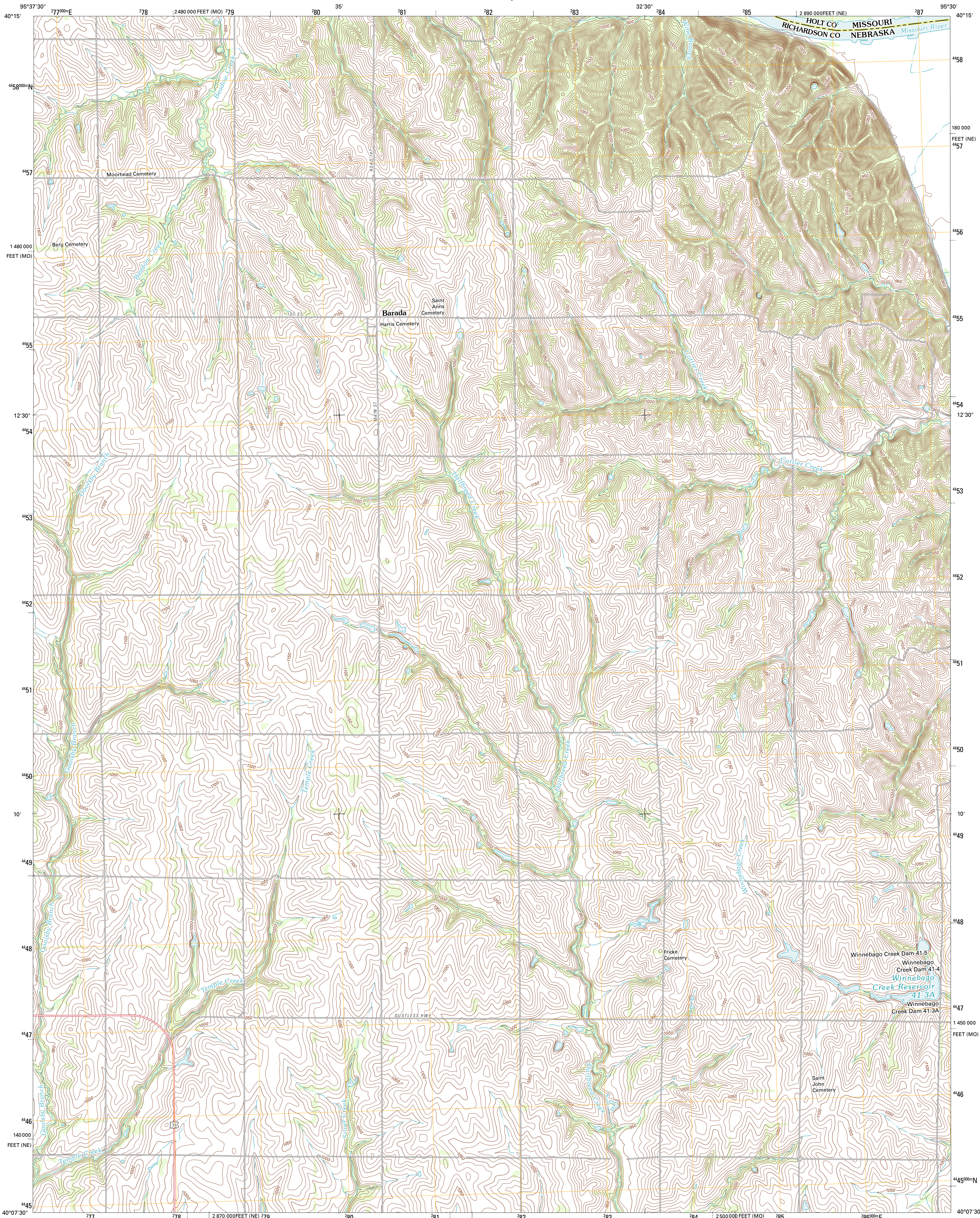




U.S. DEPARTMENT OF THE INTERIOR  
U. S. GEOLOGICAL SURVEY

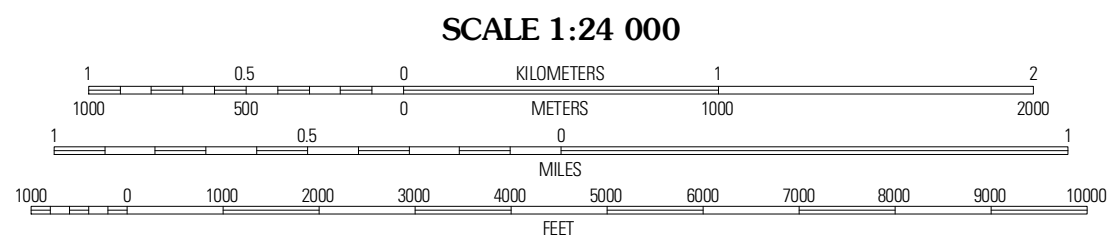
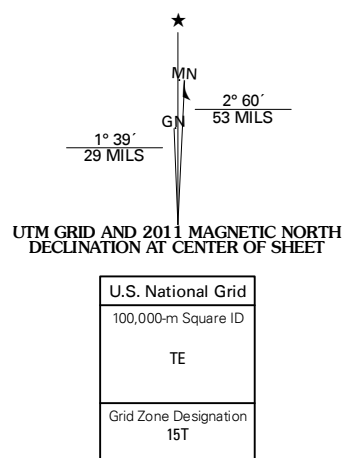


BARADA QUADRANGLE  
NEBRASKA-MISSOURI  
7.5-MINUTE SERIES



Produced by the United States Geological Survey  
North American Datum of 1983 (NAD83)  
World Geodetic System of 1984 (WGS84). Projection and  
1 000-meter grid: Universal Transverse Mercator, Zone 15T  
10 000-foot ticks: Nebraska Coordinate System of 1983,  
Missouri Coordinate System of 1983 (west zone)

Imagery.....N.A.P., July 2010  
Roads.....©2006-2011 TomTom  
Names.....GNSS, 2011  
Hydrography.....National Hydrography Dataset, 2009  
Contours.....National Elevation Dataset, 2008  
Boundaries.....Census, IBWC, IBC, USGS, 1972 - 2010

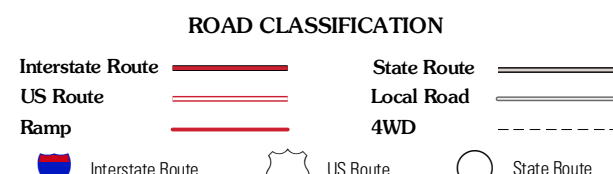


CONTOUR INTERVAL 10 FEET  
NORTH AMERICAN VERTICAL DATUM OF 1988

This map was produced to conform with the  
National Geospatial Program US Topo Product Standard, 2011.  
A metadata file associated with this product is draft version 0.6.1



ADJOINING 7.5' QUADRANGLES		
Nemaha	Langdon	Fairfax
Verdon	Barada	Corning
Salem	Falls City	Rulo



BARADA, NE-MO  
2011