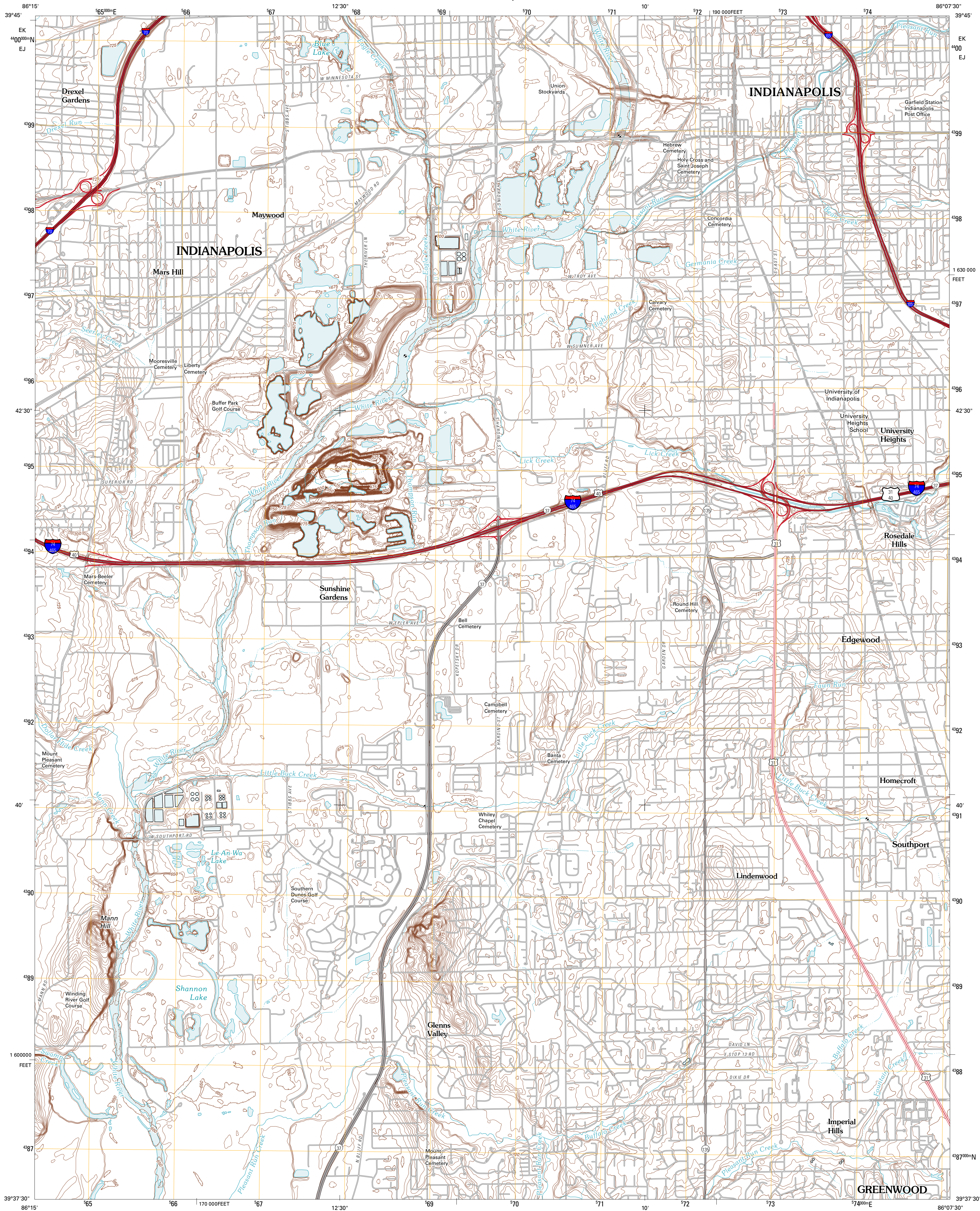




U.S. DEPARTMENT OF THE INTERIOR  
U. S. GEOLOGICAL SURVEY

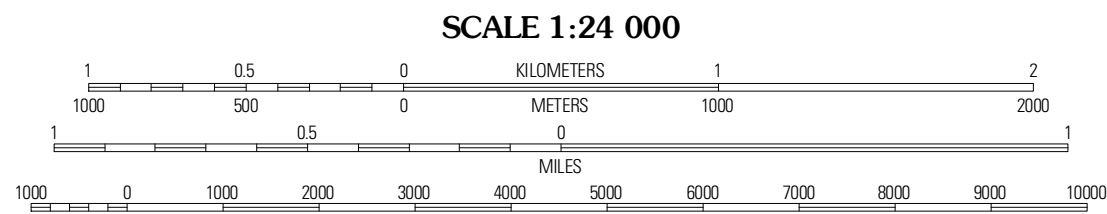
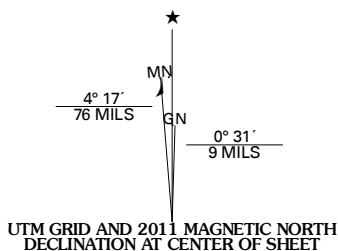


MAYWOOD QUADRANGLE  
INDIANA  
7.5-MINUTE SERIES



Produced by the United States Geological Survey  
North American Datum of 1983 (NAD83)  
World Geodetic System of 1984 (WGS84). Projection and  
1 000-meter grid: Universal Transverse Mercator, Zone 16S  
10 000-foot ticks: Indiana Coordinate System of 1983 (east  
and west zones)

Imagery:.....NAIP, August 2010  
Roads:.....©2006-2010 Tele Atlas  
Names:.....GNIS, 2010  
Hydrography:.....National Hydrography Dataset, 2010  
Contours:.....National Elevation Dataset, 2007

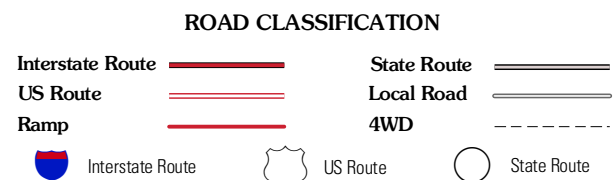


CONTOUR INTERVAL 5 FEET  
NORTH AMERICAN VERTICAL DATUM OF 1988

This map was produced to conform with version 0.5.10 of the  
draft USGS Standards for 7.5-Minute Quadrangle Maps.  
A metadata file associated with this product is draft version 0.5.11



QUADRANGLE LOCATION		
Clermont	Indianapolis West	Indianapolis East
Bridgeport	Maywood	Beech Grove
Moorestown East	Bargersville	Greenwood



MAYWOOD, IN  
2011