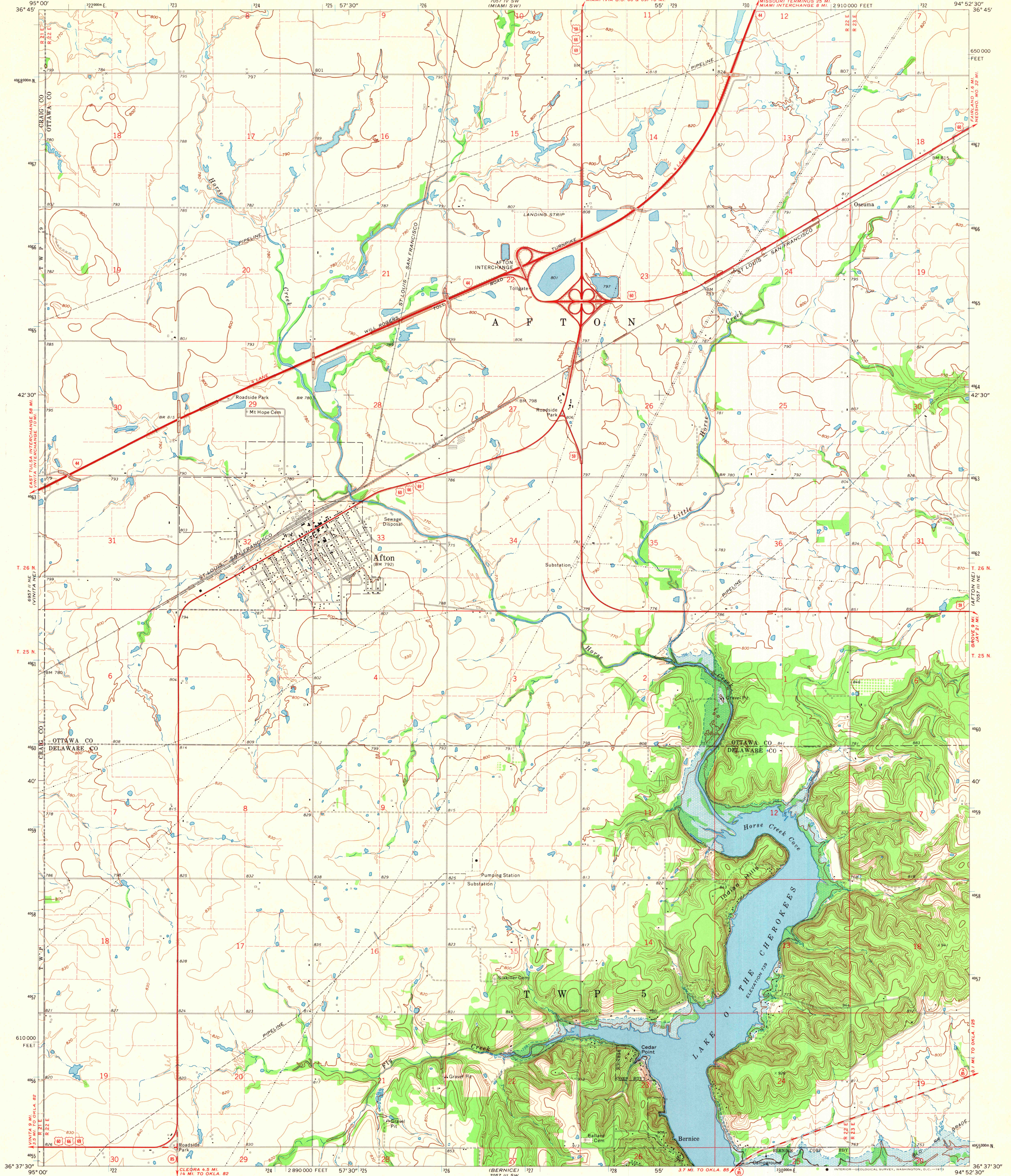
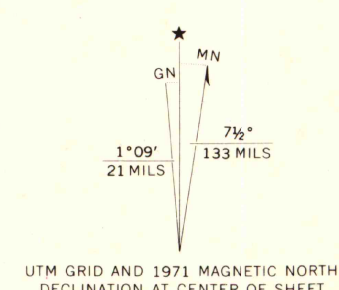


UNITED STATES  
DEPARTMENT OF THE INTERIOR  
GEOLOGICAL SURVEY

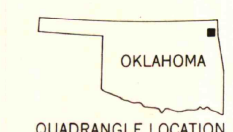
AFTON QUADRANGLE  
OKLAHOMA  
7.5 MINUTE SERIES (TOPOGRAPHIC)



Mapped, edited, and published by the Geological Survey  
Control by USGS and USC&GS  
Topography by photogrammetric methods from aerial  
photographs taken 1970. Field checked 1971.  
Polyconic projection. 1927 North American datum.  
10,000-foot grid based on Oklahoma coordinate system, north zone  
1000-meter Universal Transverse Mercator grid ticks,  
zone 15, shown in blue.  
Areas covered by dashed light-blue pattern  
are subject to controlled inundation.  
Fine red dashed lines indicate selected fence and field lines where  
generally visible on aerial photographs. This information is unchecked.



THIS MAP COMPLIES WITH NATIONAL MAP ACCURACY STANDARDS  
FOR SALE BY U.S. GEOLOGICAL SURVEY, DENVER, COLORADO 80225, OR WASHINGTON, D.C. 20422  
AND BY THE OKLAHOMA GEOLOGICAL SURVEY, NORMAN, OKLAHOMA 73069  
A FOLDER DESCRIBING TOPOGRAPHIC MAPS AND SYMBOLS IS AVAILABLE ON REQUEST



MAP AND AIR PHOTO  
LIBRARY  
AUG 30 1973  
University of Wisconsin

ROAD CLASSIFICATION

Primary highway, hard surface	Light-duty road, hard or improved surface
Secondary highway, hard surface	Unimproved road
Interstate Route	U.S. Route
	State Route

AFTON, OKLA.  
N3637.5-W9452.5/7.5  
1971  
AMS 7057 III NW-SERIES V883