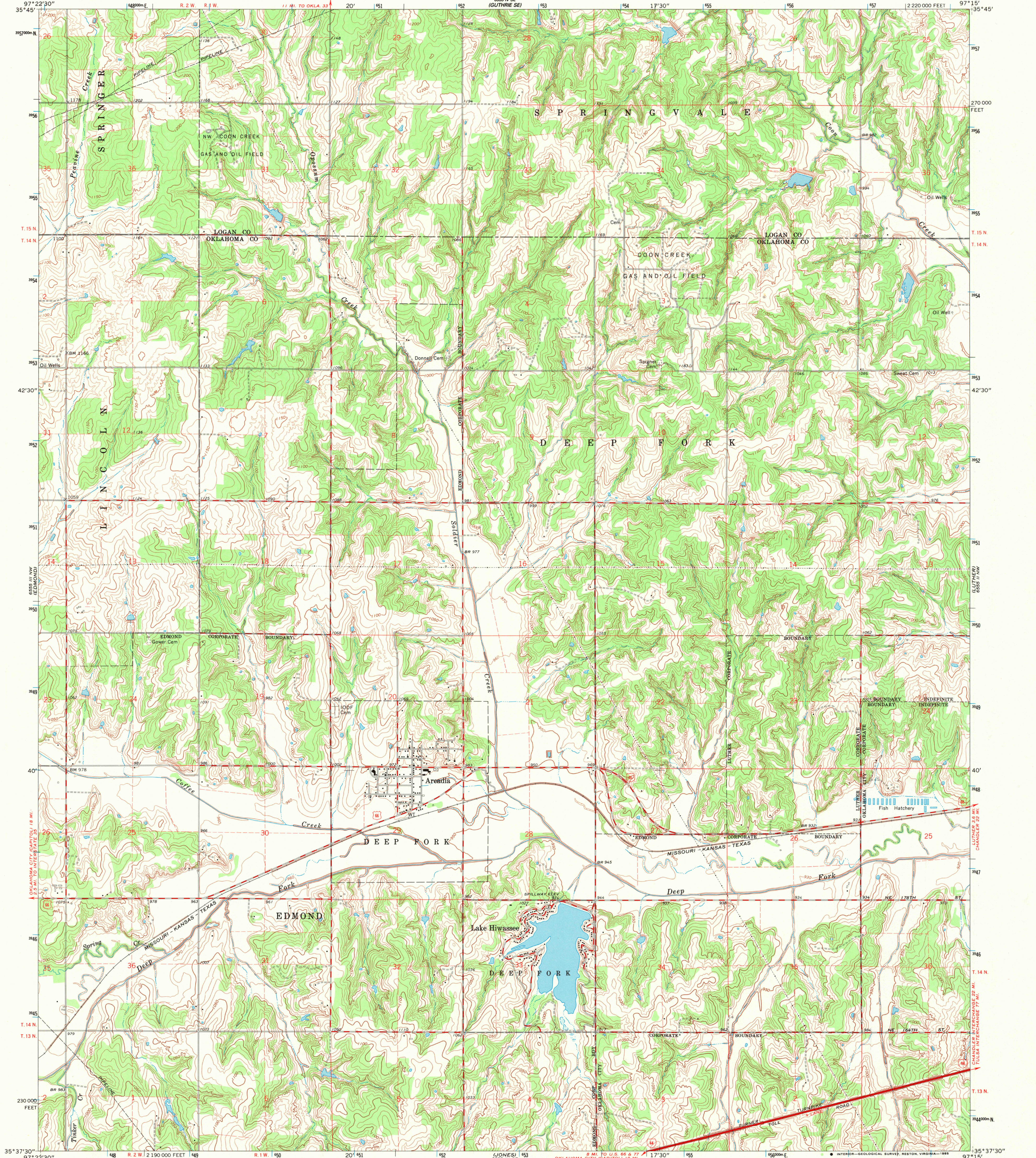


UNITED STATES  
DEPARTMENT OF THE INTERIOR  
GEOLOGICAL SURVEY

ARCADIA QUADRANGLE  
OKLAHOMA  
7.5 MINUTE SERIES (TOPOGRAPHIC)



Mapped, edited, and published by the Geological Survey  
Control by USGS and USC&GS

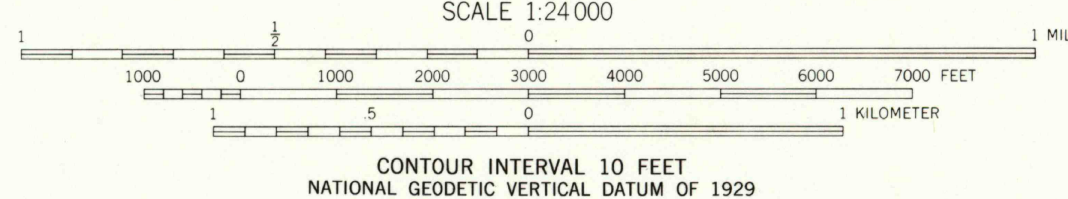
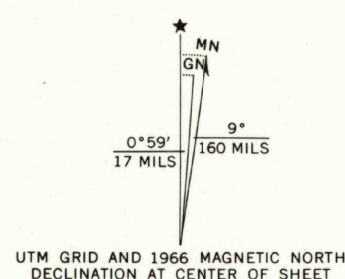
Topography by photogrammetric methods from aerial  
photographs taken 1964. Field checked 1966

Polyconic projection. 1927 North American datum  
10,000-foot grid based on Oklahoma coordinate system, north zone  
1000-meter Universal Transverse Mercator grid ticks,  
zone 14, shown in blue

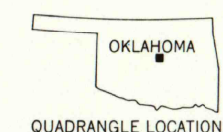
To place on the predicted North American Datum 1983,  
move the projection lines 3 meters south and  
28 meters east as shown by dashed corner ticks

Fine red dashed lines indicate selected fence and field lines where  
generally visible on aerial photographs. This information is unchecked

Map photinspected 1981  
No major culture or drainage changes observed



THIS MAP COMPLIES WITH NATIONAL MAP ACCURACY STANDARDS  
FOR SALE BY U. S. GEOLOGICAL SURVEY, DENVER, COLORADO 80225, OR RESTON, VIRGINIA 22092  
AND OKLAHOMA GEOLOGICAL SURVEY, NORMAN, OKLAHOMA 73069  
A FOLDER DESCRIBING TOPOGRAPHIC MAPS AND SYMBOLS IS AVAILABLE ON REQUEST



| ROAD CLASSIFICATION |                 |
|---------------------|-----------------|
| Heavy-duty          | Light-duty      |
| Medium-duty         | Unimproved dirt |
| Interstate Route    | U. S. Route     |



ARCADIA, OKLA.

35097-F3-TF-024

1966  
PHOTOINSPECTED 1981  
DMA 6555 III NE-SERIES 7883