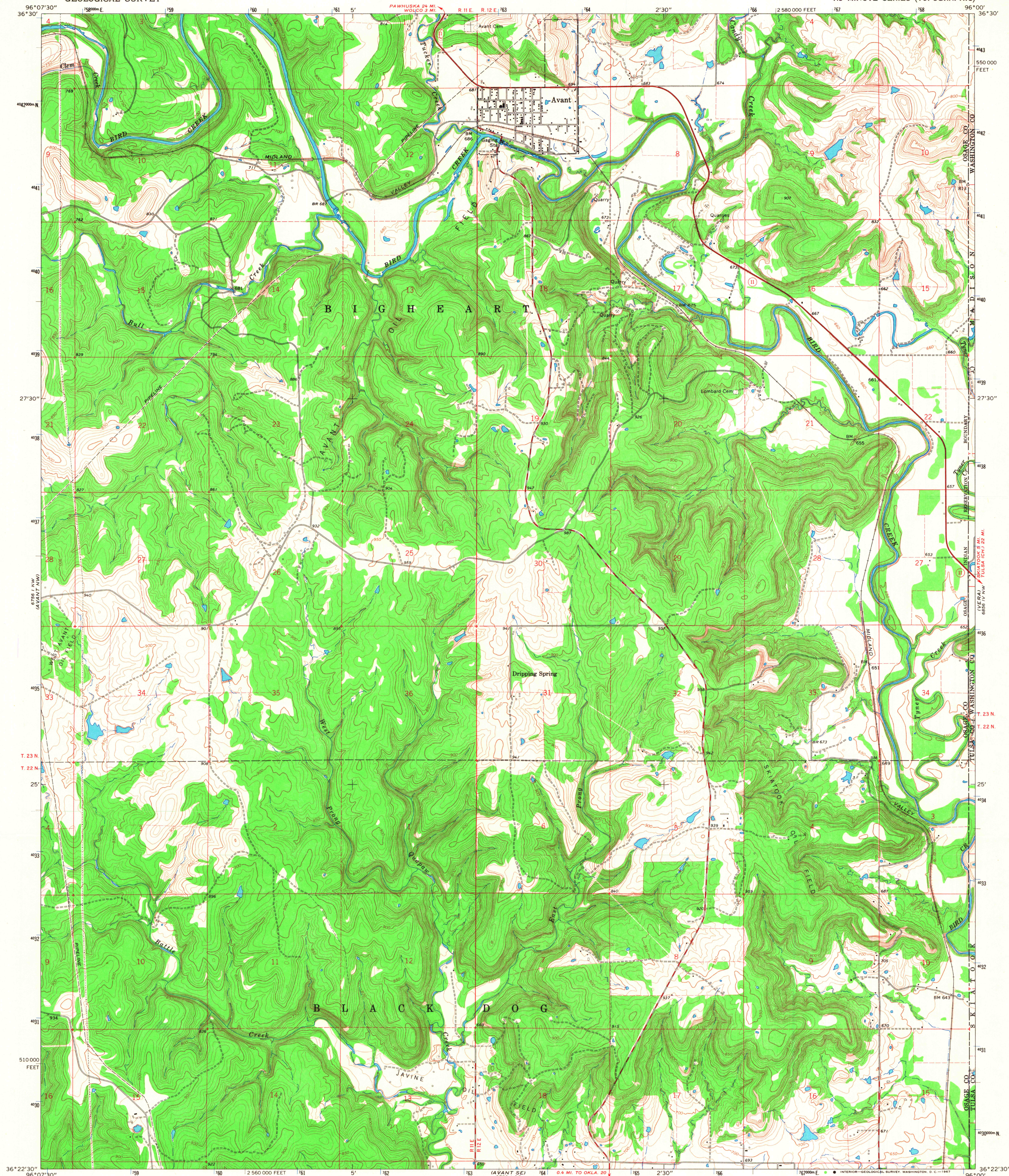
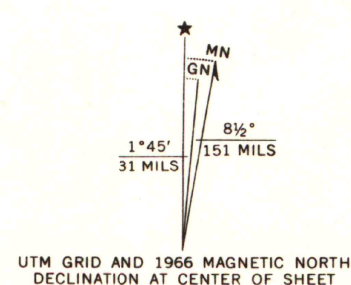


UNITED STATES  
DEPARTMENT OF THE INTERIOR  
GEOLOGICAL SURVEY

AVANT QUADRANGLE  
OKLAHOMA  
7.5 MINUTE SERIES (TOPOGRAPHIC)



Mapped, edited, and published by the Geological Survey  
Control by USGS and USC&GS  
Topography by photogrammetric methods from aerial  
photographs taken 1965. Field checked 1966  
Polyconic projection, 1927 North American datum  
10,000-foot grid based on Oklahoma coordinate system, north zone  
1000-meter Universal Transverse Mercator grid ticks,  
zone 14, shown in blue  
Fine red dashed lines indicate selected fence and field lines where  
generally visible on aerial photographs. This information is



SCALE 1:24,000  
CONTOUR INTERVAL 10 FEET  
DATUM IS MEAN SEA LEVEL

MAP AND AIR PHOTO LIBRARY  
University of Wisconsin



ROAD CLASSIFICATION  
Heavy-duty ——— Light-duty ———  
Medium-duty ——— Unimproved dirt ———  
○ State Route

AVANT, OKLA.  
N3622.5—W9600/7.5

1966

AMS 6756 1 NE—SERIES V883

THIS MAP COMPLIES WITH NATIONAL MAP ACCURACY STANDARDS  
FOR SALE BY U.S. GEOLOGICAL SURVEY, DENVER, COLORADO 80225, OR WASHINGTON, D. C. 20242  
A FOLDER DESCRIBING TOPOGRAPHIC MAPS AND SYMBOLS IS AVAILABLE ON REQUEST