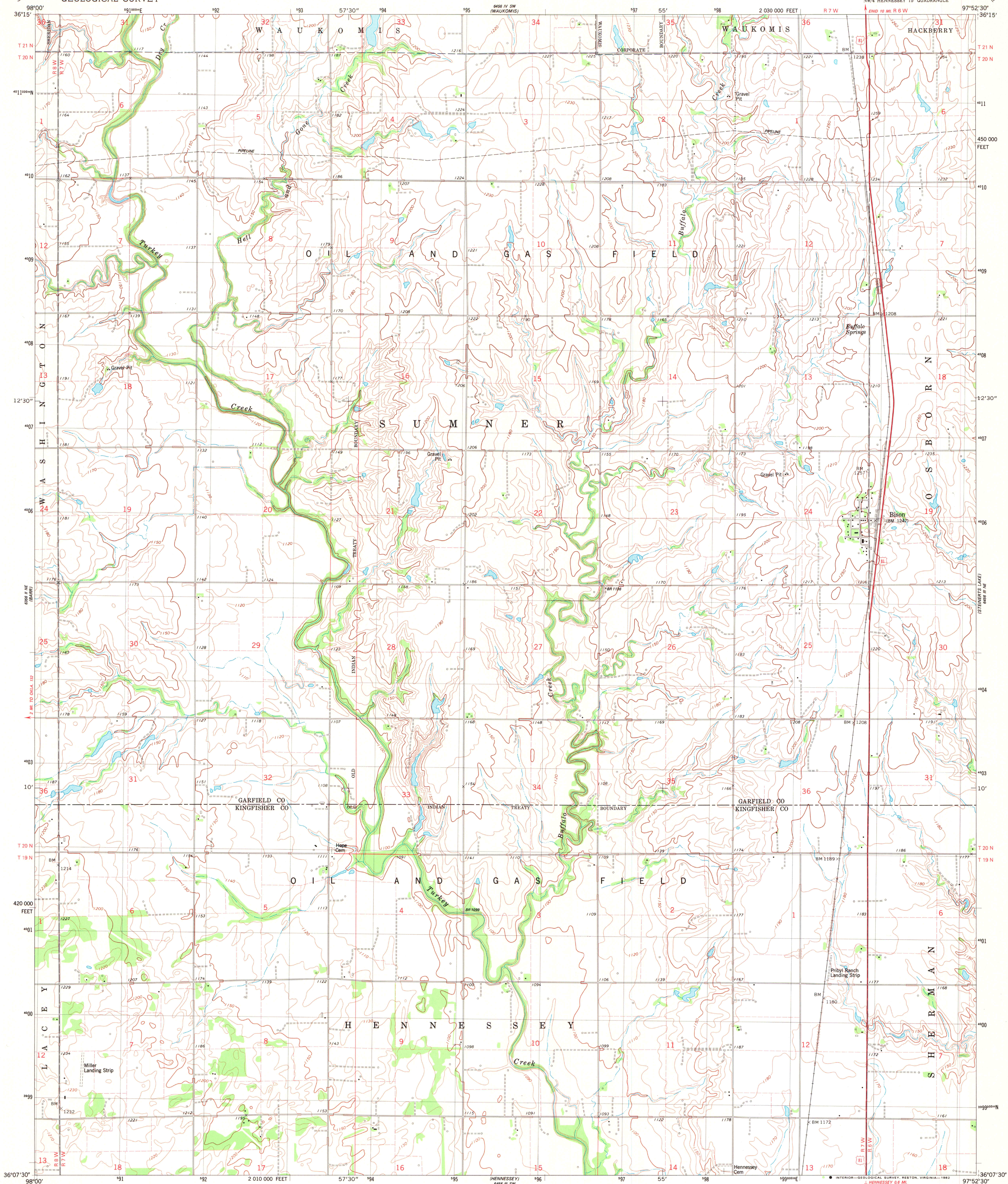
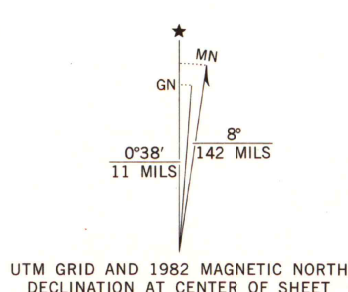


UNITED STATES  
DEPARTMENT OF THE INTERIOR  
GEOLOGICAL SURVEY

BISON QUADRANGLE  
OKLAHOMA  
7.5 MINUTE SERIES (TOPOGRAPHIC)  
NW/4 HENNESSEY 15' QUADRANGLE



Mapped, edited, and published by the Geological Survey  
Control by USGS and NOS/NOAA  
Topography by photogrammetric methods from aerial photographs  
taken 1977. Field checked 1979. Map edited 1982  
Projection and 10,000-foot grid ticks: Oklahoma coordinate  
system, north zone (Lambert conformal conic)  
1000-meter Universal Transverse Mercator grid, zone 14  
1927 North American Datum  
To place on the predicted North American Datum 1983  
move the projection lines 1 meter south and  
29 meters east as shown by dashed corner ticks  
Fine dashed lines indicate selected fence and field lines where  
generally visible on aerial photographs. This information is unchecked



CONTOUR INTERVAL 10 FEET  
NATIONAL GEODETIC VERTICAL DATUM OF 1929

THIS MAP COMPLIES WITH NATIONAL MAP ACCURACY STANDARDS  
FOR SALE BY U. S. GEOLOGICAL SURVEY, DENVER, COLORADO 80225, OR RESTON, VIRGINIA 22092  
AND BY THE OKLAHOMA GEOLOGICAL SURVEY, NORMAN, OKLAHOMA 73069  
A FOLDER DESCRIBING TOPOGRAPHIC MAPS AND SYMBOLS IS AVAILABLE ON REQUEST



Primary highway,  
hard surface  
Secondary highway,  
hard surface  
Unimproved road  
Interstate Route  
U. S. Route  
State Route

A.H. ROBINSON  
MAP LIBRARY

APR 22 1983

University of Wisconsin  
Madison

BISON, OKLA.  
NW/4 HENNESSEY 15' QUADRANGLE  
N3607.5-N9752.5/7.5  
1982

DMA 6456 III NW-SERIES V833