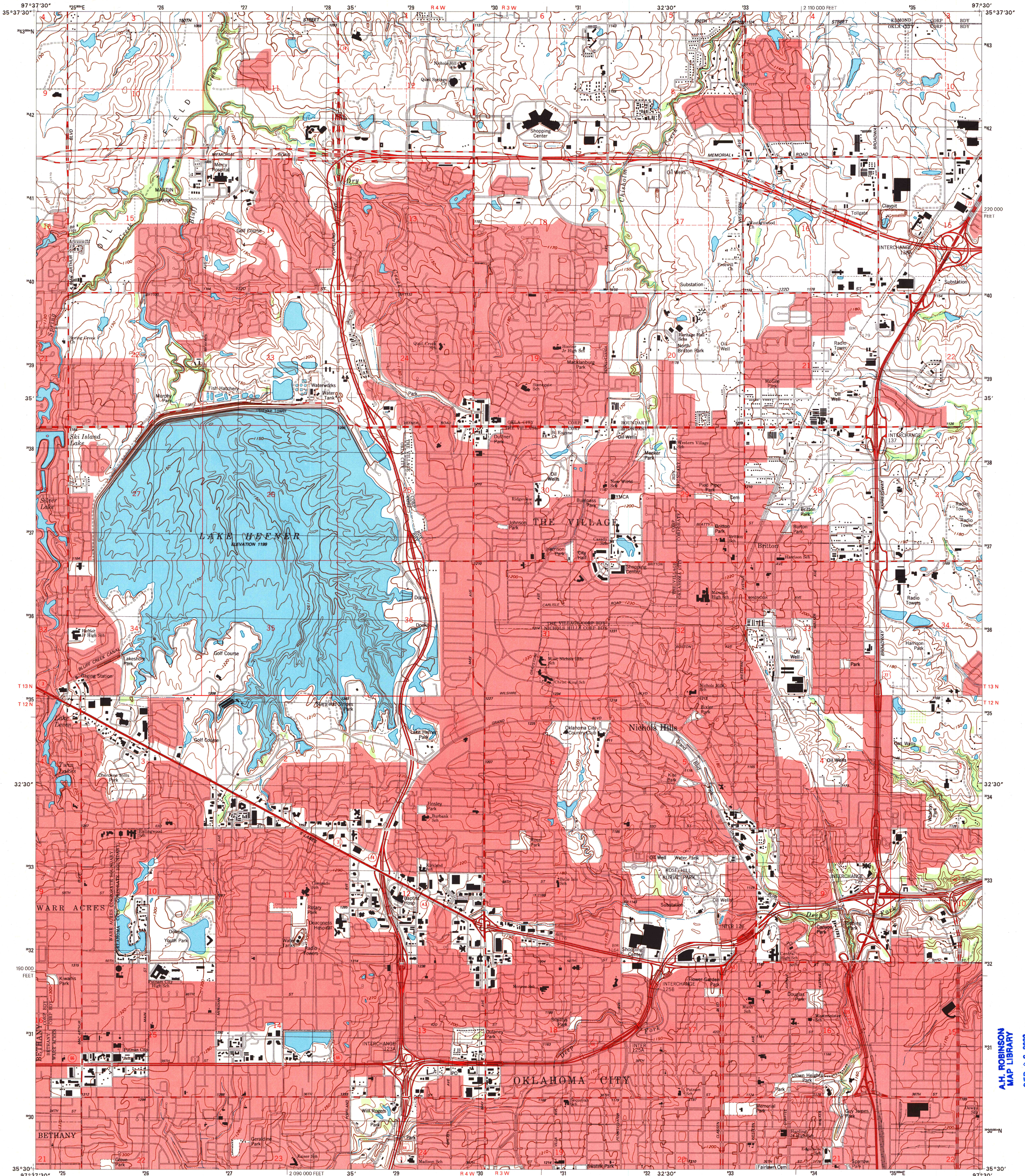




U.S. DEPARTMENT OF THE INTERIOR  
U.S. GEOLOGICAL SURVEY

BRITTON QUADRANGLE  
OKLAHOMA-OKLAHOMA CO.  
7.5-MINUTE SERIES (TOPOGRAPHIC)



Produced by the United States Geological Survey  
Topography compiled 1984. Planimetry derived from imagery  
taken 1955 and other sources. Public Land Survey System and  
survey control current as of 1985  
Underwater contours in Lake Hefner by Water Resources Division  
North American Datum of 1983 (NAD 83). Projection and  
1 000-meter grid: Universal Transverse Mercator, zone 14  
10 000-foot ticks: Oklahoma Coordinate System of 1983 (north zone)  
North American Datum of 1927 (NAD 27) is shown by dashed  
corner ticks. The values of the shift between NAD 83 and  
NAD 27 for 7.5-minute intersections are obtainable from  
National Geodetic Survey NADCON software  
Landmark buildings verified 1985

UTM GRID AND 1999 MAGNETIC NORTH  
DECLINATION AT CENTER OF SHEET

SCALE 1:24 000  
CONTOUR INTERVAL 10 FEET  
NATIONAL GEODETIC VERTICAL DATUM OF 1929  
TO CONVERT FROM FEET TO METERS, MULTIPLY BY 0.3048

ROAD CLASSIFICATION  
Primary highway  
hard surface .....  
Secondary highway  
hard surface .....  
Unimproved road .....  
Light-duty road, hard or  
improved surface .....  
Unimproved road .....  
Interstate Route  
U.S. Route  
State Route



QUADRANGLE LOCATION

1	2	3
4	5	6
7	8	9

U.S. Regional  
Depository Copy  
DO NOT DISCARD

BRITTON, OK  
1995

NIMA 6455 II SE-SERIES V883

A.H. ROBINSON  
MAP LIBRARY  
SEP 6 2000  
University of Wisconsin  
Madison

9 780607 924817