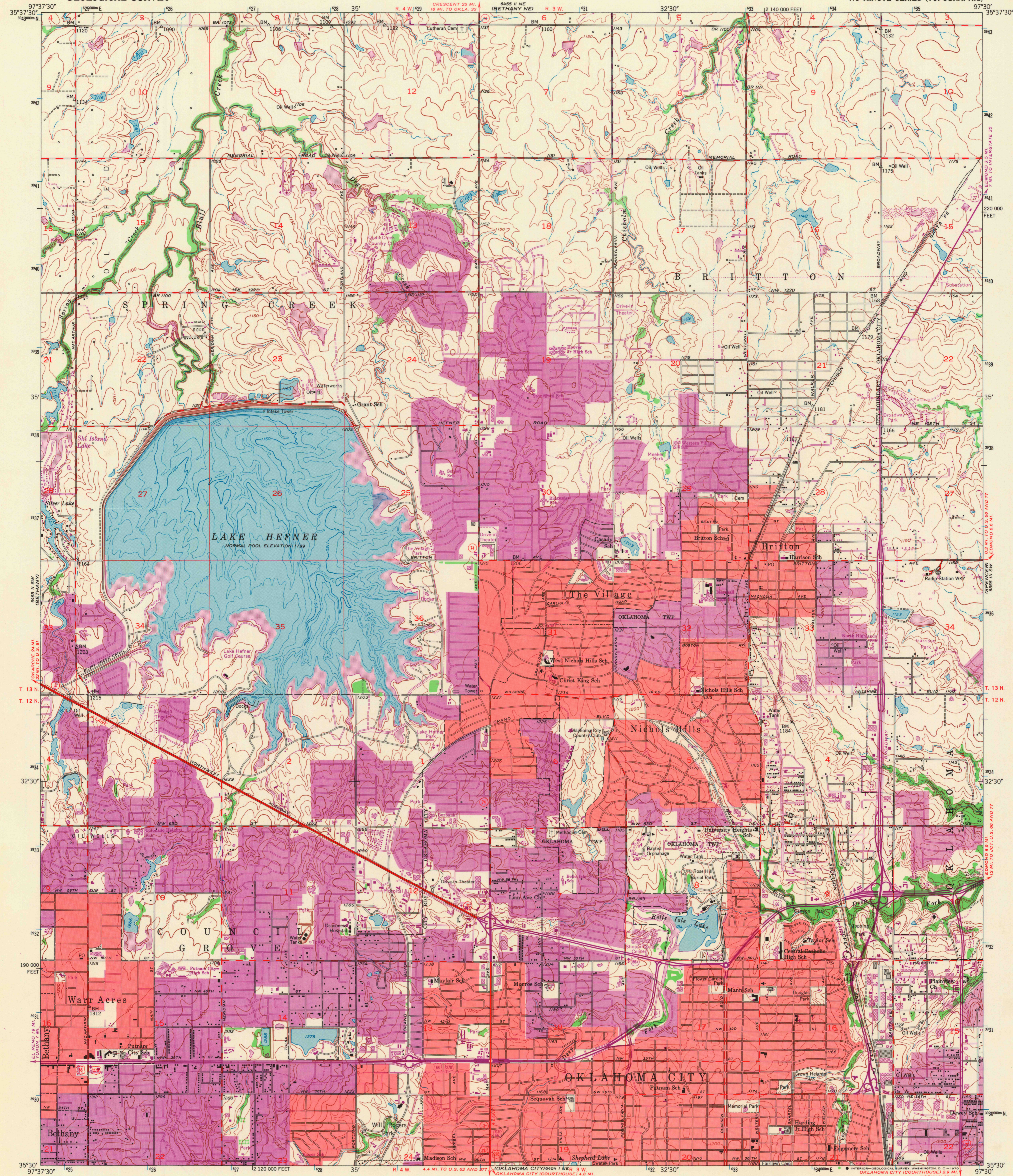
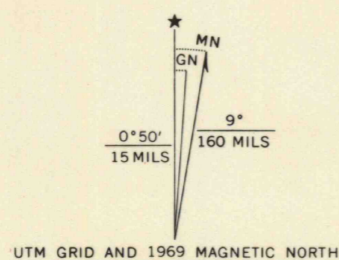


UNITED STATES
DEPARTMENT OF THE INTERIOR
GEOLOGICAL SURVEY

BRITTON QUADRANGLE
OKLAHOMA-OKLAHOMA CO.
7.5 MINUTE SERIES (TOPOGRAPHIC)

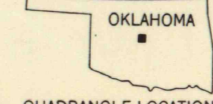


Mapped, edited, and published by the Geological Survey
Control by USGS, USC&GS, and Oklahoma Geological Survey
Culture and drainage in part compiled from aerial photographs
taken 1941, 1945, and 1950. Topography by plane-table surveys 1951
Underwater contours in Lake Hefner by Water Resources Division
Polyconic projection. 1927 North American datum
10,000-foot grid based on Oklahoma coordinate system, north zone
1000-meter Universal Transverse Mercator grid ticks,
zone 14, shown in blue
Red tint indicates areas in which only landmark buildings are shown
Revisions shown in purple compiled from aerial photographs
taken 1969. This information not field checked
Purple tint indicates extension of urban areas



SCALE 1:24,000
CONTOUR INTERVAL 10 FEET
DATUM IS MEAN SEA LEVEL
THIS MAP COMPLIES WITH NATIONAL MAP ACCURACY STANDARDS
FOR SALE BY U.S. GEOLOGICAL SURVEY, DENVER, COLORADO 80225, OR WASHINGTON, D.C. 20242
AND BY THE OKLAHOMA GEOLOGICAL SURVEY, NORMAN, OKLAHOMA 73069
A FOLDER DESCRIBING TOPOGRAPHIC MAPS AND SYMBOLS IS AVAILABLE ON REQUEST

USGS
Historical File
Topographic Division



ROAD CLASSIFICATION
Heavy-duty — 4 LANE 16 LANE Light-duty —
Medium-duty — 4 LANE 16 LANE Unimproved dirt —
U.S. Route — State Route —

BRITTON, OKLA.
N3530-W9730/7.5

1951
PHOTOREVISED 1969
AMS 6455 II SE—SERIES V883

4805
OCT 13 1970