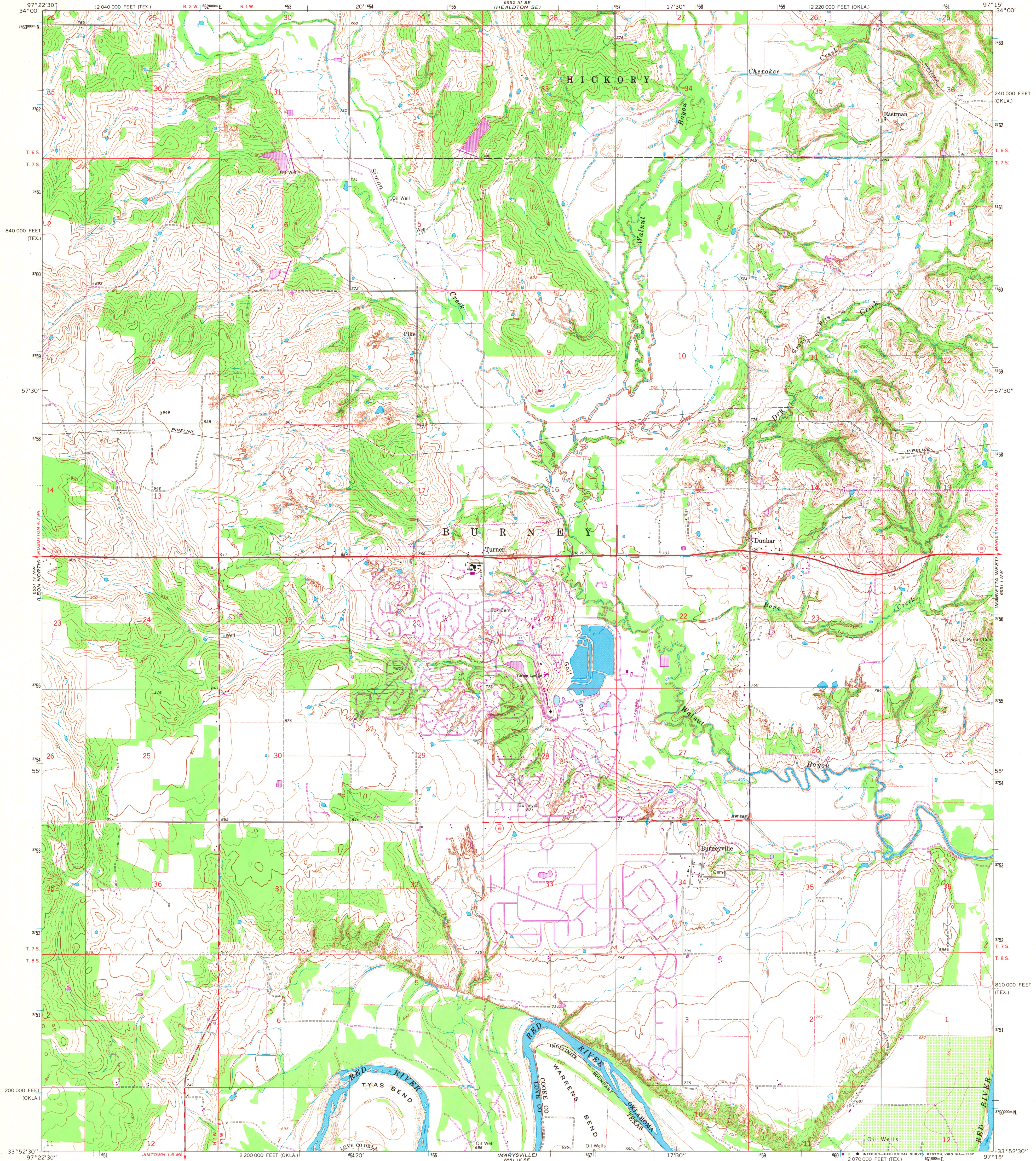


UNITED STATES
DEPARTMENT OF THE INTERIOR
GEOLOGICAL SURVEY

BURNEYVILLE QUADRANGLE
OKLAHOMA-TEXAS
7.5 MINUTE SERIES (TOPOGRAPHIC)



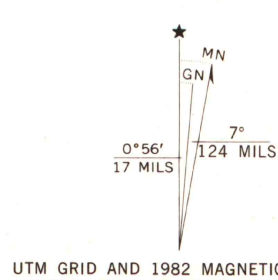
Mapped, edited, and published by the Geological Survey

Control by USGS and NOS/NOAA

Topography by photogrammetric methods from aerial photographs taken 1966. Field checked 1968

Polycyclic projection. 10,000-foot grid ticks based on Oklahoma coordinate system, south zone and on Texas coordinate system, north central zone. 1000-meter Universal Transverse Mercator grid ticks, zone 14, shown in blue. 1927 North American Datum. To place on the predicted North American Datum 1983 move the projection lines 7 meters south and 28 meters east as shown by dashed corner ticks

Fine red dashed lines indicate selected fence lines
Revisions shown in purple and woodland compiled from aerial photographs taken 1979 and other sources
This information not field checked. Map edited 1982



SCALE 1:24,000
CONTOUR INTERVAL 10 FEET
DOTTED LINES REPRESENT 5-FOOT CONTOURS
NATIONAL GEODETIC VERTICAL DATUM OF 1929

THIS MAP COMPLIES WITH NATIONAL MAP ACCURACY STANDARDS
FOR SALE BY U. S. GEOLOGICAL SURVEY, DENVER, COLORADO 80226, OR RESTON, VIRGINIA 22092
AND BY OKLAHOMA GEOLOGICAL SURVEY, NORMAN, OKLAHOMA 73089
A FOLDER DESCRIBING TOPOGRAPHIC MAPS IS AVAILABLE ON REQUEST

ROAD CLASSIFICATION
Primary highway, all weather, hard surface
Secondary highway, all weather, fair or dry hard surface
Light-duty road, all weather, improved surface
Unimproved road, fair or dry weather
State Route



A.H. ROBINSON
MAP LIBRARY

APR 22 1983

University of Wisconsin
Madison

BURNEYVILLE, OKLA.-TEX.

N35E25-W97E15/7.5

1968
PHOTOREVISED 1982
DMA 6551 IV NE-SERIES V883

3397-434