

6896 IV SE
(WINGANDY)

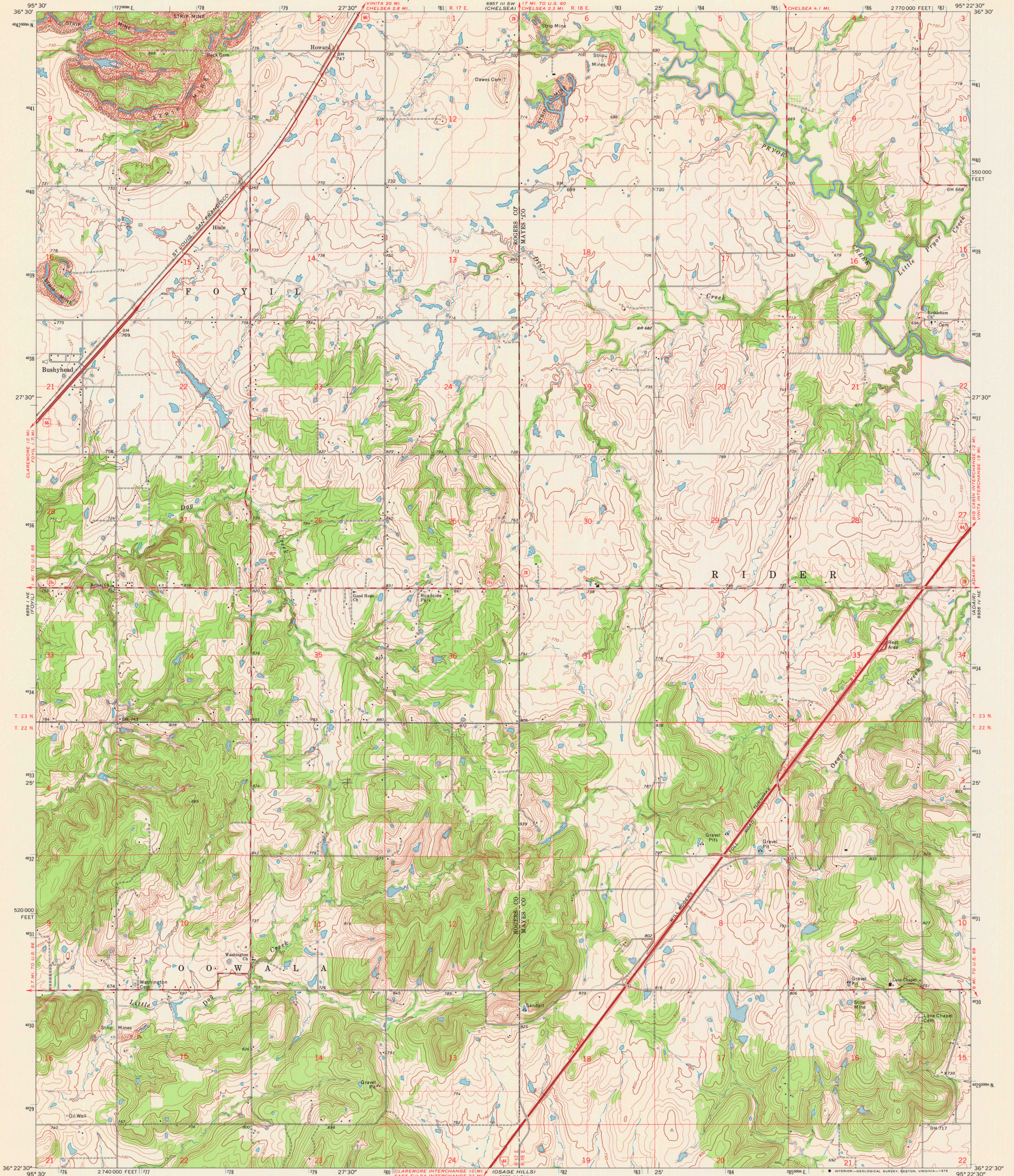
UNITED STATES
DEPARTMENT OF THE INTERIOR
GEOLOGICAL SURVEY



STATE OF OKLAHOMA

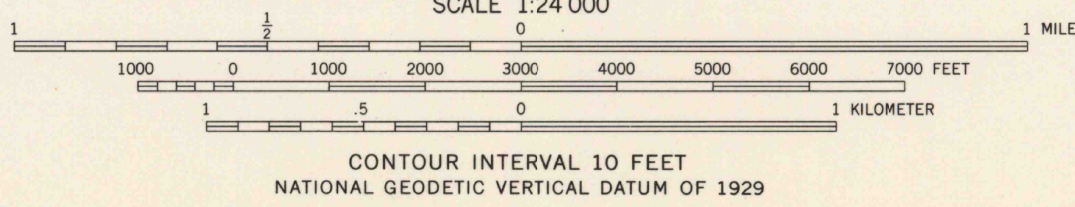
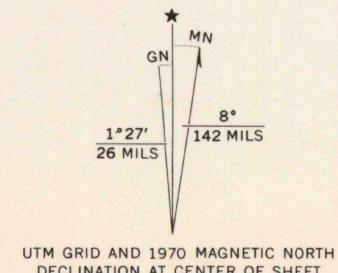
BUSHYHEAD QUADRANGLE
OKLAHOMA
7.5 MINUTE SERIES (TOPOGRAPHIC)

6897 IV SE
(WHITE OAK)

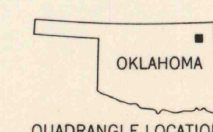


CLAREMORE
6896 IV SE

Mapped, edited, and published by the Geological Survey
in cooperation with the Oklahoma Highway Department,
Oklahoma Water Resources Board, and Oklahoma State Soil
Conservation Board
Control by USGS and USC&GS
Topography by photogrammetric methods from aerial
photographs taken 1968. Field checked 1970
Polyconic projection. 1927 North American datum
10,000-foot grid based on Oklahoma coordinate system, north zone
1000-meter Universal Transverse Mercator grid ticks,
zone 15, shown in blue
Fine red dashed lines indicate selected fence and field lines where
generally visible on aerial photographs. This information is unchecked



THIS MAP COMPLIES WITH NATIONAL MAP ACCURACY STANDARDS
FOR SALE BY U.S. GEOLOGICAL SURVEY, DENVER, COLORADO 80225, OR RESTON, VIRGINIA 22092
AND BY THE OKLAHOMA GEOLOGICAL SURVEY, NORMAN, OKLAHOMA 73069
A FOLDER DESCRIBING TOPOGRAPHIC MAPS AND SYMBOLS IS AVAILABLE ON REQUEST



ROAD CLASSIFICATION
Primary highway, all weather, light-duty road, all weather,
hard surface improved surface
Secondary highway, all weather, Unimproved road, fair or dry
hard surface weather
Interstate Route U.S. Route State Route

USGS
Historical File
Topographic Division

BUSHYHEAD, OKLA.
N3622.5-W9522.5/7.5
1970
AMS 6956 IV NW-SERIES V883

APR 16 1978