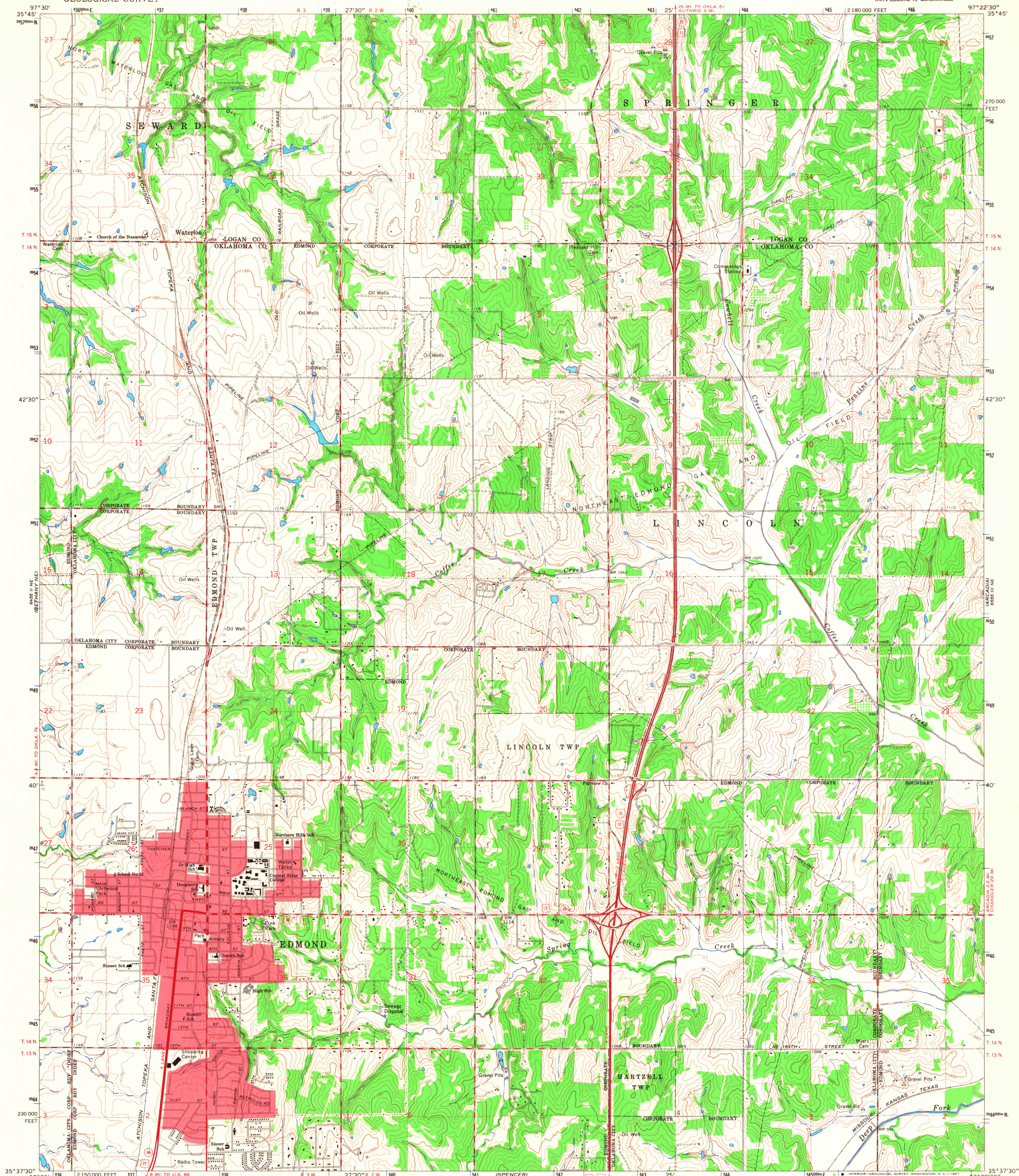
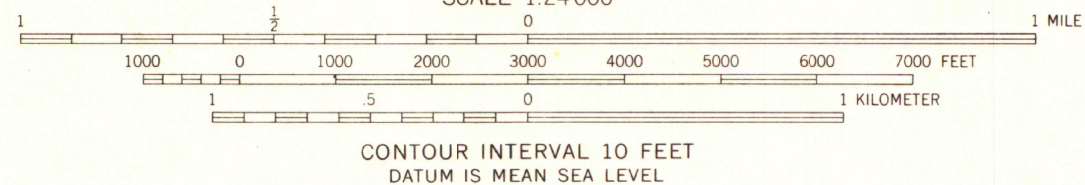
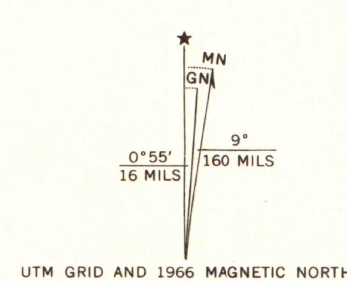


UNITED STATES  
DEPARTMENT OF THE INTERIOR  
GEOLOGICAL SURVEY

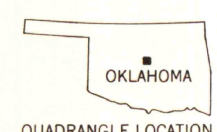
EDMOND QUADRANGLE  
OKLAHOMA  
7.5 MINUTE SERIES (TOPOGRAPHIC)  
NW/4 EDMOND 15' QUADRANGLE



Mapped, edited, and published by the Geological Survey  
Control by USGS, USC&GS, and Oklahoma Geological Survey  
Topography by photogrammetric methods from aerial  
photographs taken 1964. Field checked 1966  
Polyconic projection. 1927 North American datum  
10,000-foot grid based on Oklahoma coordinate system, north zone  
1000-meter Universal Transverse Mercator grid ticks,  
zone 14, shown in blue  
Red tint indicates area in which only landmark buildings are shown  
Fine red dashed lines indicate selected fence and field lines where  
generally visible on aerial photographs. This information is unchecked



MAP AND AIR PHOTO LIBRARY  
University of Wisconsin



ROAD CLASSIFICATION  
Heavy-duty ——— Light-duty ———  
Medium-duty ——— Unimproved dirt ———  
○ Interstate Route ○ U.S. Route ○ State Route

EDMOND, OKLA.  
NW/4 EDMOND 15' QUADRANGLE  
N3537.5—W9722.5/7.5

1966

AMS 6555 III NW—SERIES V883