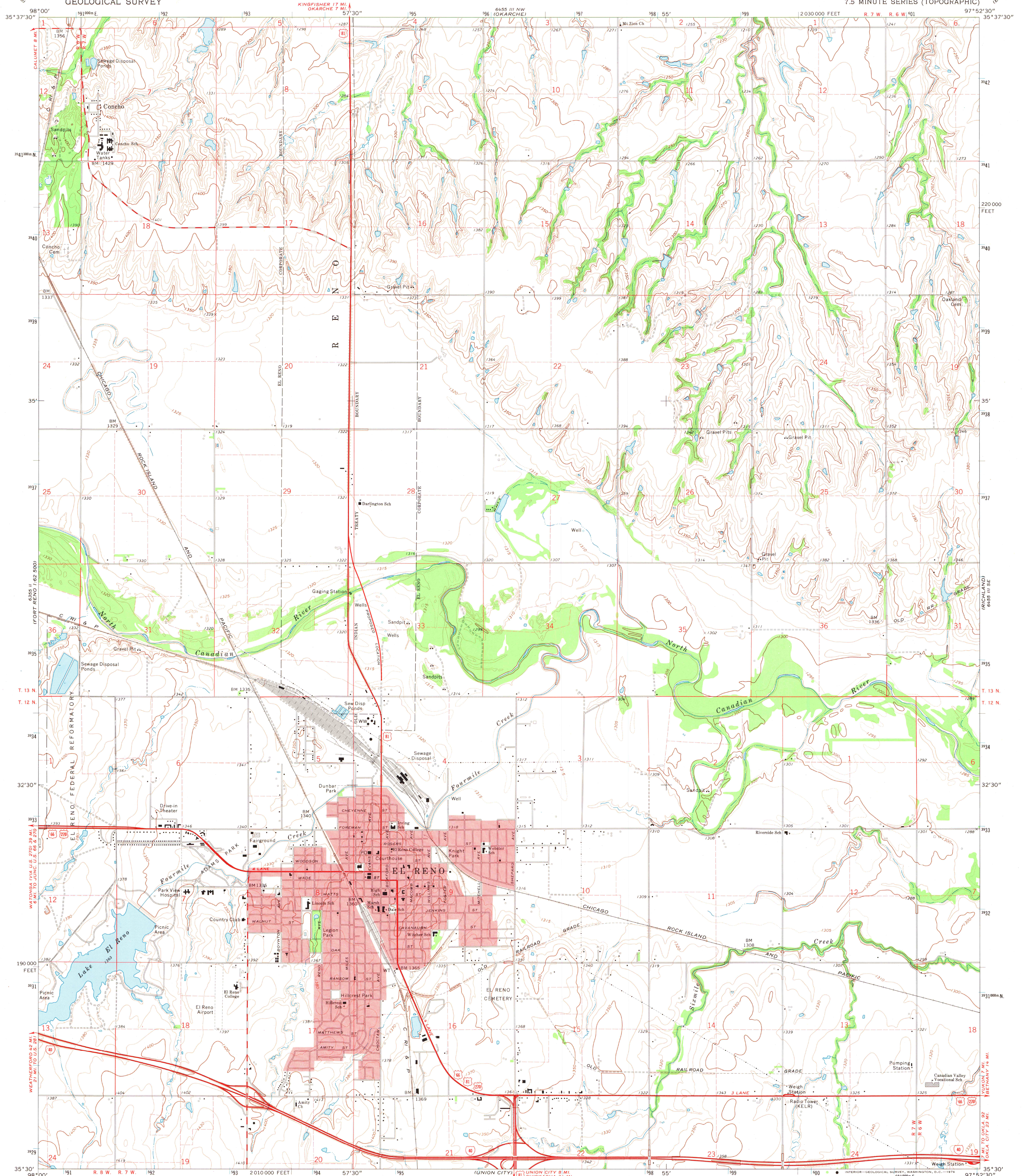


UNITED STATES  
DEPARTMENT OF THE INTERIOR  
GEOLOGICAL SURVEY

EL RENO QUADRANGLE  
OKLAHOMA—CANADIAN CO.  
7.5 MINUTE SERIES (TOPOGRAPHIC)



Mapped, edited, and published by the Geological Survey

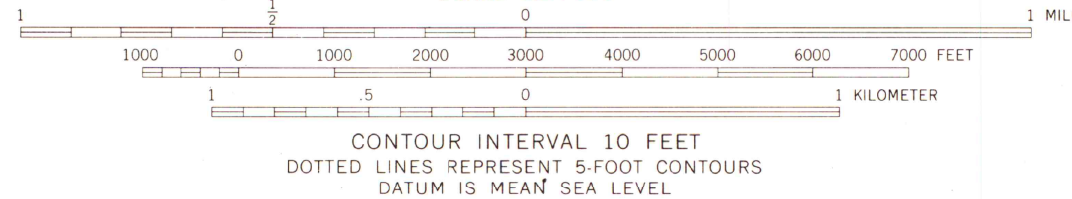
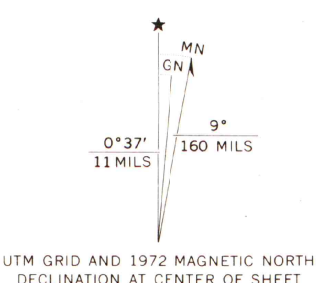
Control by USGS and USC&GS

Topography by photogrammetric methods from aerial  
photographs taken 1970. Field checked 1972

Projection and 10,000-foot grid ticks: Oklahoma coordinate  
system, north zone (Lambert conformal conic)  
1000-meter Universal Transverse Mercator grid ticks,  
zone 14, shown in blue. 1927 North American datum

Red tint indicates area in which only landmark buildings are shown

Fine red dashed lines indicate selected fence and field lines where  
generally visible on aerial photographs. This information is unchecked



ROAD CLASSIFICATION	
Primary highway, hard surface	Light-duty road, hard or improved surface
Secondary highway, hard surface	Unimproved road
Interstate Route	U. S. Route
	State Route

MAP AND AIR PHOTO  
LIBRARY

AUG 8 - 1974

EL RENO, OKLA.  
N3530—W9752.5/7.5

1972

AMS 6455 III SW—SERIES V883

University of Wisconsin