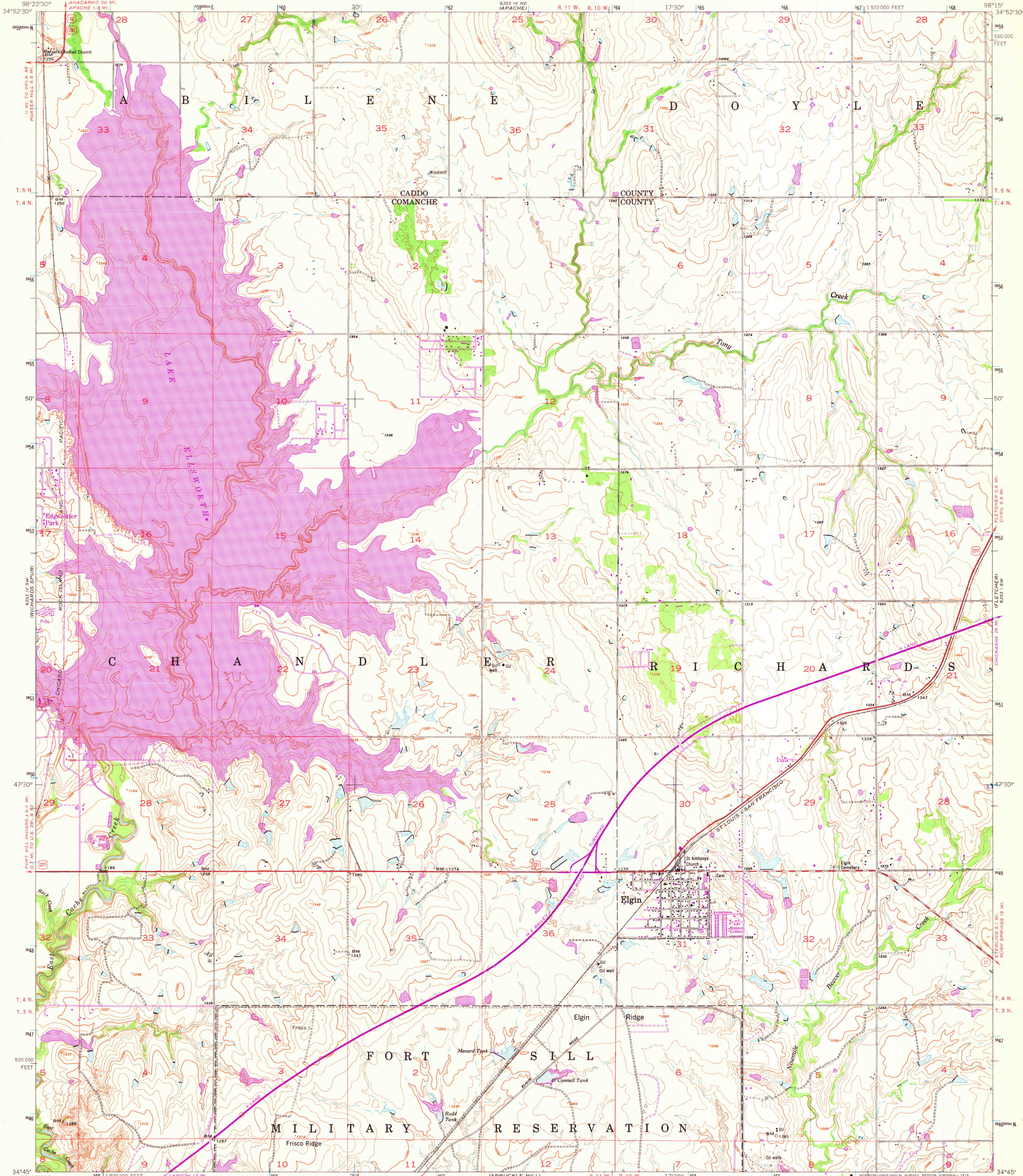


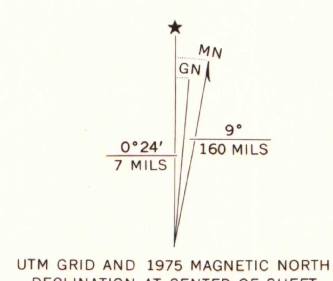
UNITED STATES
DEPARTMENT OF THE INTERIOR
GEOLOGICAL SURVEY

UNITED STATES
DEPARTMENT OF THE ARMY
CORPS OF ENGINEERS

ELGIN QUADRANGLE
OKLAHOMA
7.5 MINUTE SERIES (TOPOGRAPHIC)
SE/4 APACHE 15' QUADRANGLE



Mapped by the Army Map Service
Published for civil use by the Geological Survey
Control by USGS, USC&GS, USCE, Field Artillery,
and Oklahoma Geodetic Survey
Topography by photogrammetric methods from aerial photographs
taken 1947. Culture and drainage revised from aerial photographs
taken 1954. Field check 1956
Polyconic projection. 1927 North American datum
10,000-foot grid based on Oklahoma coordinate system, south zone
1000-metre Universal Transverse Mercator grid ticks,
zone 14, shown in blue
Unchecked elevations are shown in brown
Revisions shown in purple compiled by the Geological Survey from
aerial photographs taken 1975. This information not field checked



THIS MAP COMPLIES WITH NATIONAL MAP ACCURACY STANDARDS
FOR SALE BY U.S. GEOLOGICAL SURVEY, DENVER, COLORADO 80225, OR RESTON, VIRGINIA 22092
AND BY THE OKLAHOMA GEOLOGICAL SURVEY, NORMAN, OKLAHOMA 73069
A FOLDER DESCRIBING TOPOGRAPHIC MAPS AND SYMBOLS IS AVAILABLE ON REQUEST



MAP AND AIR PHOTO
LIBRARY

OCT 15 1976

University of Wisconsin
Madison

ROAD CLASSIFICATION
Heavy-duty ——— Light-duty ———
Medium-duty ——— Unimproved dirt ———
U.S. Route ——— State Route ———

ELGIN, OKLA.
SE/4 APACHE 15' QUADRANGLE
N3445-W9815/7.5

1956
PHOTOREVISED 1975
AMS 6353 IV SE-SERIES V885