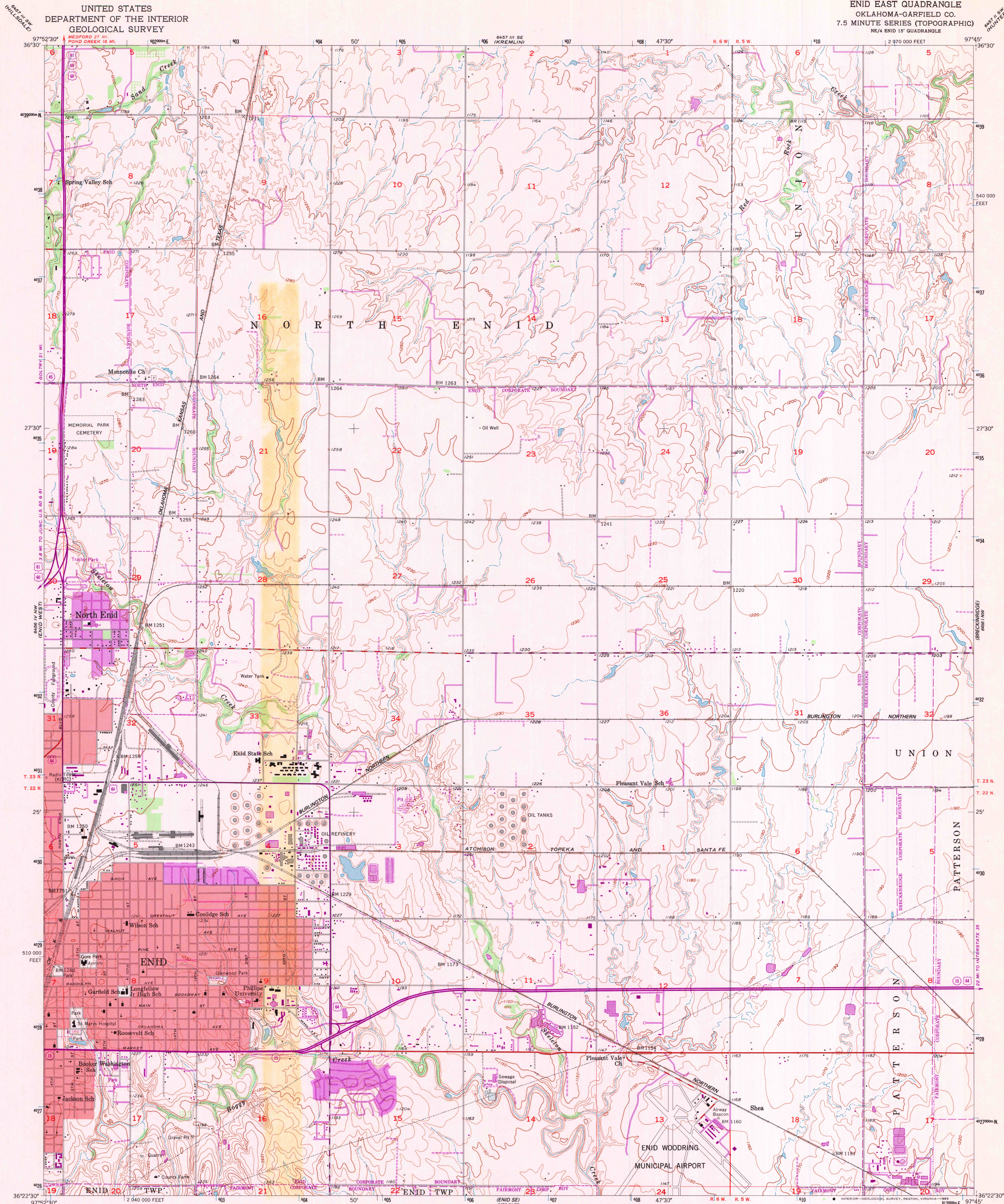


UNITED STATES
DEPARTMENT OF THE INTERIOR
GEOLOGICAL SURVEY

ENID EAST QUADRANGLE
OKLAHOMA-GARFIELD CO.
7.5 MINUTE SERIES (TOPOGRAPHIC)
NE/4 ENID 15' QUADRANGLE



Mapped, edited, and published by the Geological Survey

Control by USGS and U.S. Coast and Geodetic Survey

Topography from aerial photographs by Kelsh plotter
Aerial photographs taken 1954. Field check 1955

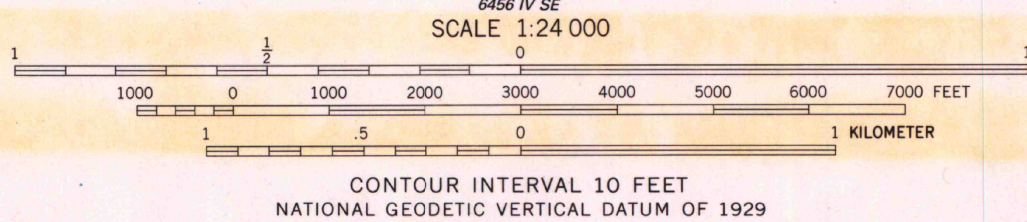
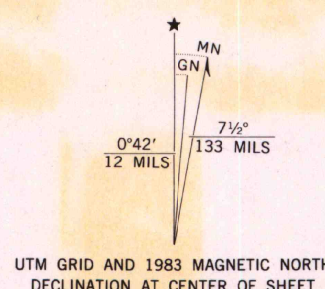
Polyconic projection. 1927 North American datum
10,000-foot grid based on Oklahoma coordinate system, north zone
1000-meter Universal Transverse Mercator grid ticks,
zone 14, shown in blue

Red tint indicates area in which only
landmark buildings are shown

To place on the predicted North American Datum 1983
move the projection lines 1 meter south and
29 meters east as shown by dashed corner ticks

Revisions shown in purple compiled from aerial photographs taken 1981 and
other sources. This information not field checked. Map edited 1983

Purple tint indicates extension of urban areas



THIS MAP COMPLIES WITH NATIONAL MAP ACCURACY STANDARDS
FOR SALE BY U.S. GEOLOGICAL SURVEY, DENVER, COLORADO 80225, OR RESTON, VIRGINIA 22092
AND BY THE OKLAHOMA GEOLOGICAL SURVEY, NORMAN, OKLAHOMA 73069
A FOLDER DESCRIBING TOPOGRAPHIC MAPS AND SYMBOLS IS AVAILABLE ON REQUEST



ROAD CLASSIFICATION	
Primary highway, hard surface	Light-duty road, hard or improved surface
Secondary highway, hard surface	Unimproved road
Interstate Route	U.S. Route
State Route	

A.H. ROBINSON
DEC - 8 1983

ENID EAST, OKLA.
NE/4 ENID 15' QUADRANGLE
N3622.5-W9745/7.5

1955
PHOTOREVISED 1983
DMA 6456 IV NE-SERIES V883

ARTHUR H. ROBINSON MAP LIBRARY
University of Wisconsin-Madison

University of Wisconsin-Madison