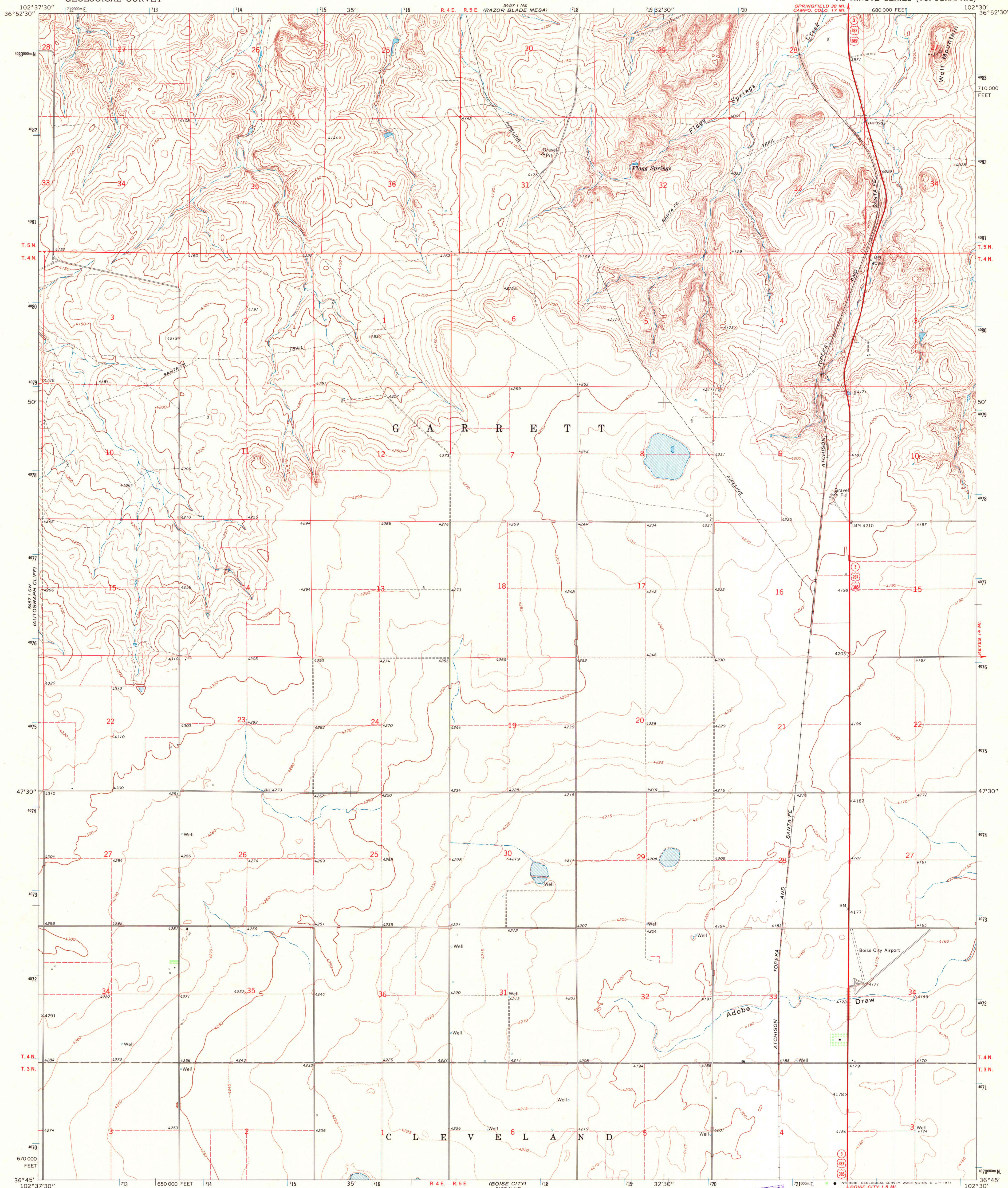


UNITED STATES
DEPARTMENT OF THE INTERIOR
GEOLOGICAL SURVEY

STATE OF OKLAHOMA

FLAGG SPRINGS QUADRANGLE
OKLAHOMA-CIMARRON CO.
7.5 MINUTE SERIES (TOPOGRAPHIC)



Mapped, edited, and published by the Geological Survey
in cooperation with the Oklahoma Highway Department,
Oklahoma Water Resources Board, and Oklahoma State Soil
Conservation Board

Control by USGS, USC&GS, and U.S. Bureau of Reclamation
Topography by photogrammetric methods from aerial
photographs taken 1966. Field checked 1969

Polyconic projection. 1927 North American datum
10,000-foot grid based on Oklahoma coordinate system, north zone
1000-meter Universal Transverse Mercator grid ticks,
zone 13, shown in blue

Fine red dashed lines indicate selected fence and field lines where
generally visible on aerial photographs. This information is unchecked

UTM GRID AND 1969 MAGNETIC NORTH
DECLINATION AT CENTER OF SHEET

THIS MAP COMPLIES WITH NATIONAL MAP ACCURACY STANDARDS
FOR SALE BY U. S. GEOLOGICAL SURVEY, DENVER, COLORADO 80225, OR WASHINGTON, D. C. 20242
AND BY THE OKLAHOMA GEOLOGICAL SURVEY, NORMAN, OKLAHOMA 73069
A FOLDER DESCRIBING TOPOGRAPHIC MAPS AND SYMBOLS IS AVAILABLE ON REQUEST

Primary highway, all weather. Light-duty road, all weather,
hard surface. Improved surface.
Unimproved road, fair or dry
weather.
U. S. Route State Route

FLAGG SPRINGS, OKLA.
N3645-W10230/7.5

1969

AMS 5457 1 SE-SERIES V883