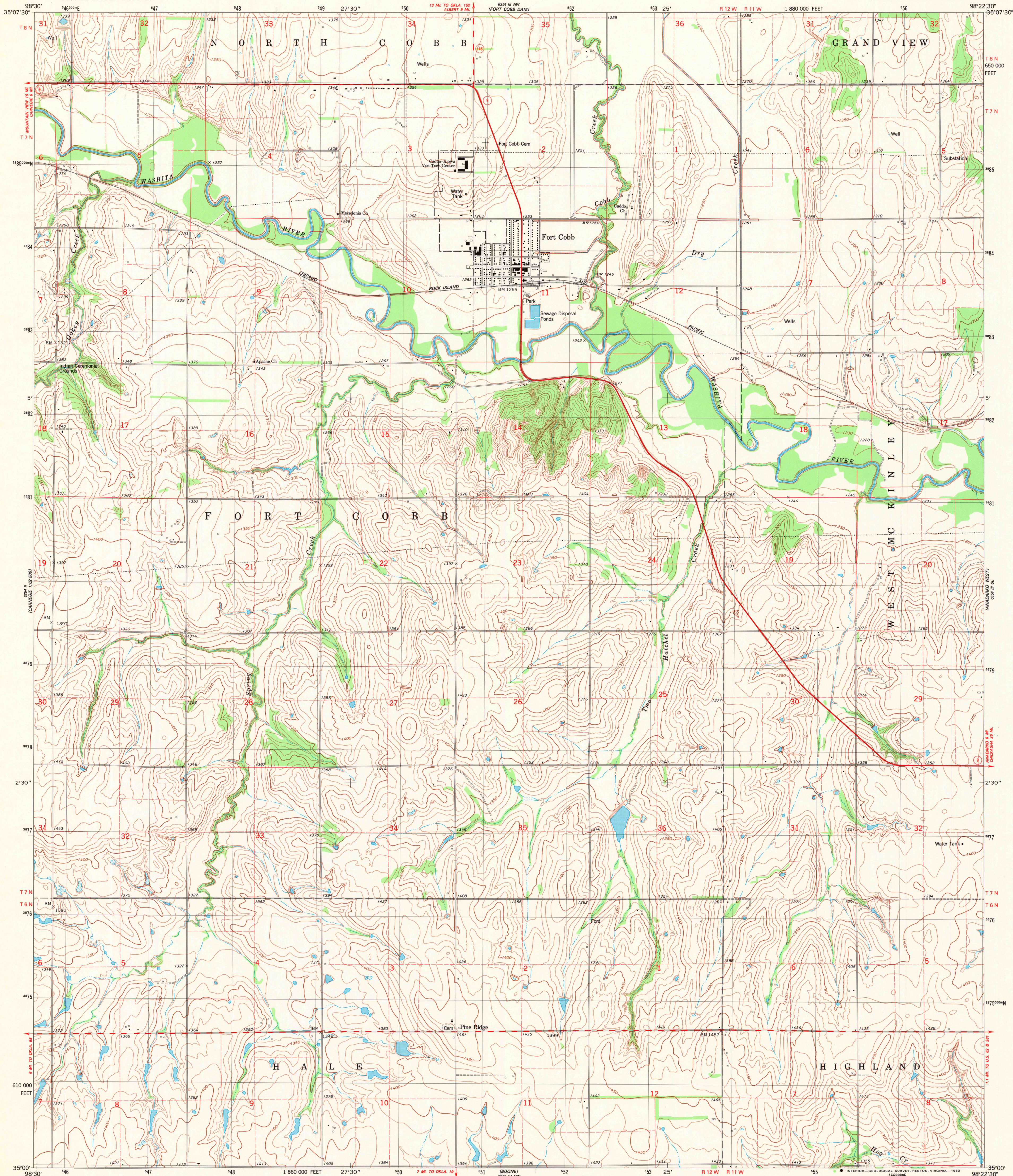
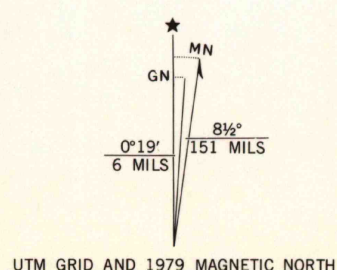


UNITED STATES  
DEPARTMENT OF THE INTERIOR  
GEOLOGICAL SURVEY

FORT COBB QUADRANGLE  
OKLAHOMA-CADDO CO.  
7.5 MINUTE SERIES (TOPOGRAPHIC)  
SW/4 FORT COBB 15' QUADRANGLE

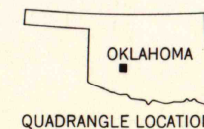


Mapped, edited, and published by the Geological Survey  
Control by USGS and NOS/NOAA  
Topography by photogrammetric methods from aerial photographs  
taken 1974. Field checked 1976. Map edited 1979  
Projection and 10,000-foot grid ticks: Oklahoma coordinate  
system, south zone (Lambert conformal conic)  
1000-meter Universal Transverse Mercator grid, zone 14  
1927 North American datum  
To place on the predicted North American Datum 1983,  
move the projection lines 4 meters south and  
31 meters east as shown by dashed corner ticks  
Fine red dashed lines indicate selected fence and field lines where  
generally visible on aerial photographs. This information is unchecked



SCALE 1:24 000  
1 000 0 1000 2000 3000 4000 5000 6000 7000 FEET  
1 KILOMETER  
CONTOUR INTERVAL 10 FEET  
NATIONAL GEODETIC VERTICAL DATUM OF 1929

THIS MAP COMPLIES WITH NATIONAL MAP ACCURACY STANDARDS  
FOR SALE BY U.S. GEOLOGICAL SURVEY, DENVER, COLORADO 80225, OR RESTON, VIRGINIA 22092  
AND OKLAHOMA GEOLOGICAL SURVEY, NORMAN, OKLAHOMA 73069  
A FOLDER DESCRIBING TOPOGRAPHIC MAPS AND SYMBOLS IS AVAILABLE ON REQUEST



ROAD CLASSIFICATION  
Primary highway, hard surface  
Secondary highway, hard surface  
Light-duty road, hard or improved surface  
Unimproved road  
Interstate Route  
U. S. Route  
State Route

FORT COBB, OKLA.  
SW/4 FORT COBB 15' QUADRANGLE  
N3500-W9822.5/7.5

1979

AMS 6354 III SW-SERIES Y883

RETURN TO:  
USGS AND HISTORICAL MAP ARCHIVES

NOV 17 1983