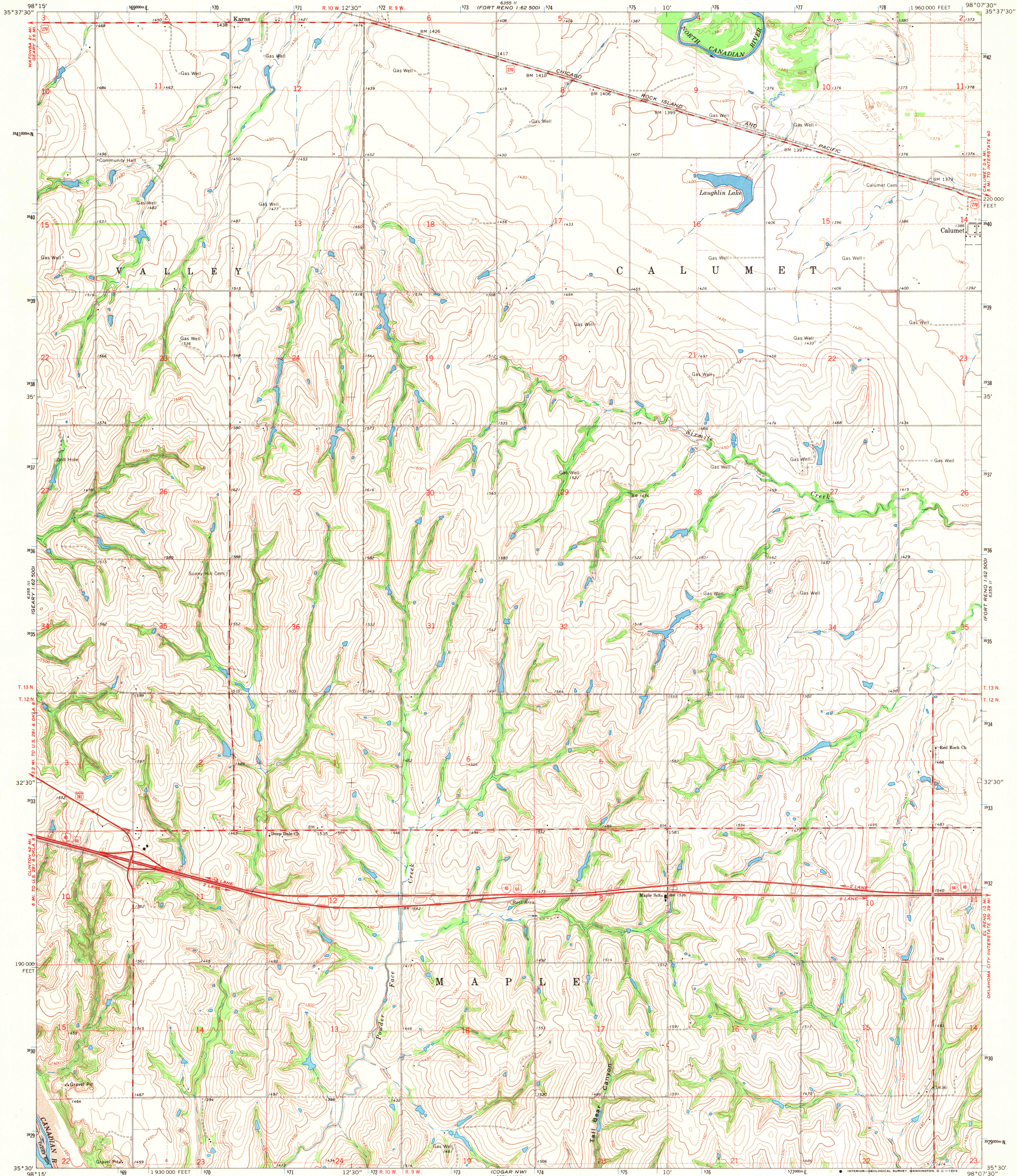


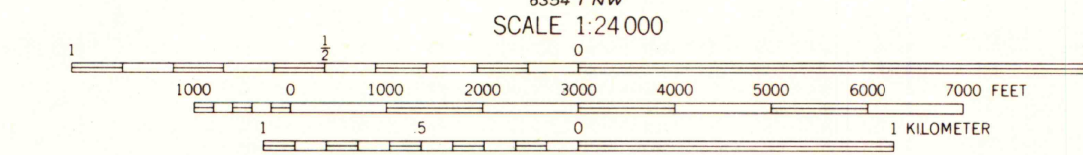
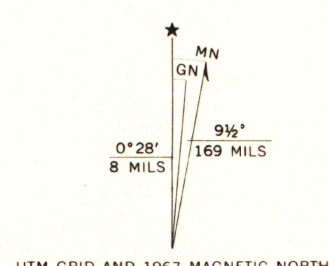
UNITED STATES
DEPARTMENT OF THE INTERIOR
GEOLOGICAL SURVEY

STATE OF OKLAHOMA

FORT RENO SW QUADRANGLE
OKLAHOMA-CANADIAN CO.
7.5 MINUTE SERIES (TOPOGRAPHIC)
SW 1/4 FORT RENO 15' QUADRANGLE



Maped, edited, and published by the Geological Survey
in cooperation with the Oklahoma Highway Department,
Oklahoma Water Resources Board, and Oklahoma State Soil
Conservation Board
Control by USGS, USC&GS, and Oklahoma Geological Survey
Topography by photogrammetric methods from aerial
photographs taken, 1965. Field checked 1967
Polyconic projection, 1927 North American datum
10,000-foot grid based on Oklahoma coordinate system, north zone
1000-meter Universal Transverse Mercator grid ticks,
zone 14, shown in blue
Fine red dashed lines indicate selected fence and field lines where
generally visible on aerial photographs. This information is unchecked



THIS MAP COMPLIES WITH NATIONAL MAP ACCURACY STANDARDS
FOR SALE BY U.S. GEOLOGICAL SURVEY, DENVER, COLORADO 80225, OR WASHINGTON, D.C. 20542
AND BY THE OKLAHOMA GEOLOGICAL SURVEY, NORMAN, OKLAHOMA 73069
A FOLDER DESCRIBING TOPOGRAPHIC MAPS AND SYMBOLS IS AVAILABLE ON REQUEST

ROAD CLASSIFICATION
Heavy-duty ————— Light-duty —————
Medium-duty ————— Unimproved dirt —————
Interstate Route ————— U.S. Route —————



MAP AND AIR PHOTO LIBRARY

FORT RENO SW, OKLA.
SW 1/4 FORT RENO 15' QUADRANGLE
N3530-W9807.5/7.5

AUG 26 1969

University of Wisconsin

1967

AMS 6355 II SW-SERIES V883