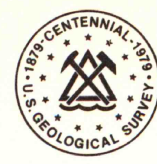
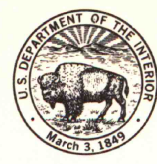


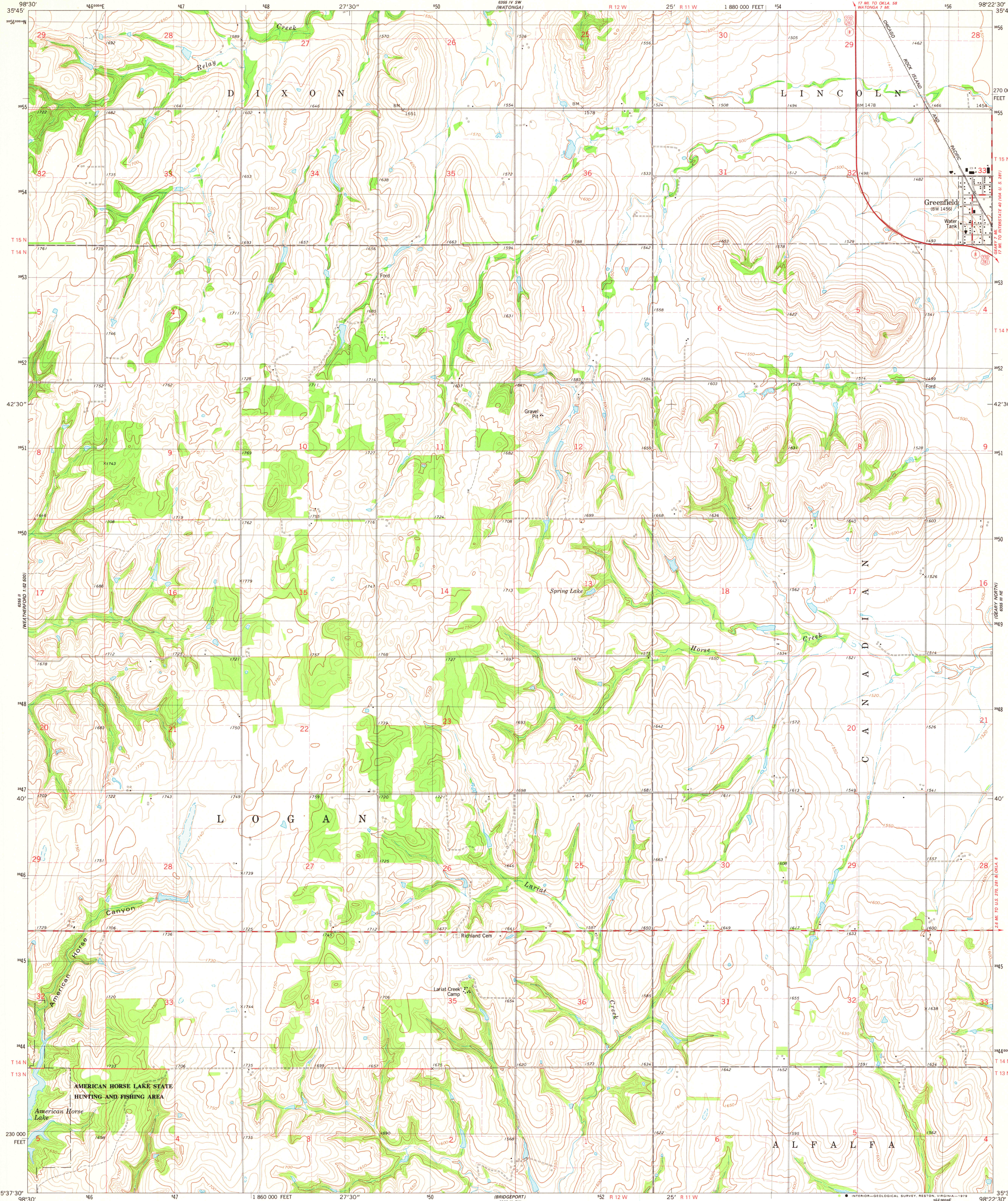
1:62,500
(NEATREPO)
1:62,500

UNITED STATES
DEPARTMENT OF THE INTERIOR
GEOLOGICAL SURVEY

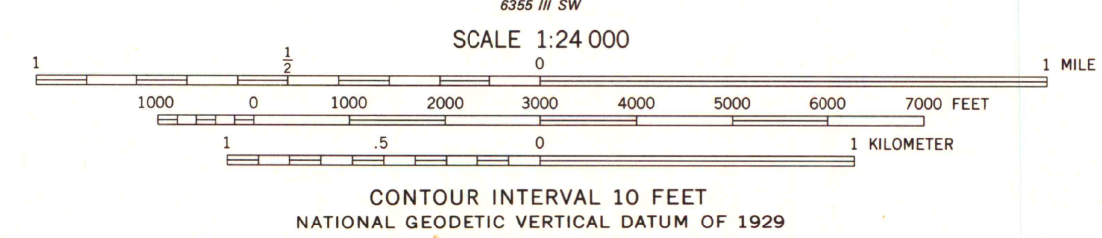
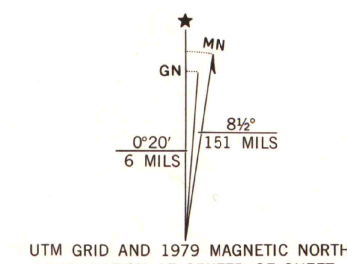


GREENFIELD QUADRANGLE
OKLAHOMA—BLAINE CO.
7.5 MINUTE SERIES (TOPOGRAPHIC)
NW/4 GEARY 15' QUADRANGLE

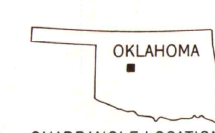
1:62,500
(NEATREPO)
1:62,500



Mapped, edited, and published by the Geological Survey
Control by USGS and NOS/NOAA
Topography by photogrammetric methods from aerial photographs
taken 1974. Field checked 1975. Map edited 1979
Projection and 10,000-foot grid ticks: Oklahoma coordinate
system, north zone (Lambert conformal conic)
1000-meter Universal Transverse Mercator grid, zone 14
1927 North American datum
Fine red dashed lines indicate selected fence and field lines where
generally visible on aerial photographs. This information is unchecked
There may be private inholdings within the boundaries
of the National or State reservations shown on this map



THIS MAP COMPLIES WITH NATIONAL MAP ACCURACY STANDARDS
FOR SALE BY U.S. GEOLOGICAL SURVEY, DENVER, COLORADO 80225, OR RESTON, VIRGINIA 22092
AND BY THE OKLAHOMA GEOLOGICAL SURVEY, NORMAN, OKLAHOMA 73069
A FOLDER DESCRIBING TOPOGRAPHIC MAPS AND SYMBOLS IS AVAILABLE ON REQUEST



MAP AND AIR PHOTO
LIBRARY

DEC 10 1979

University of Wisconsin
Madison

GREENFIELD, OKLA.
NW/4 GEARY 15' QUADRANGLE
N3537.5-W9822.5/7.5

1979
AMS 6355 III NW-SERIES V883