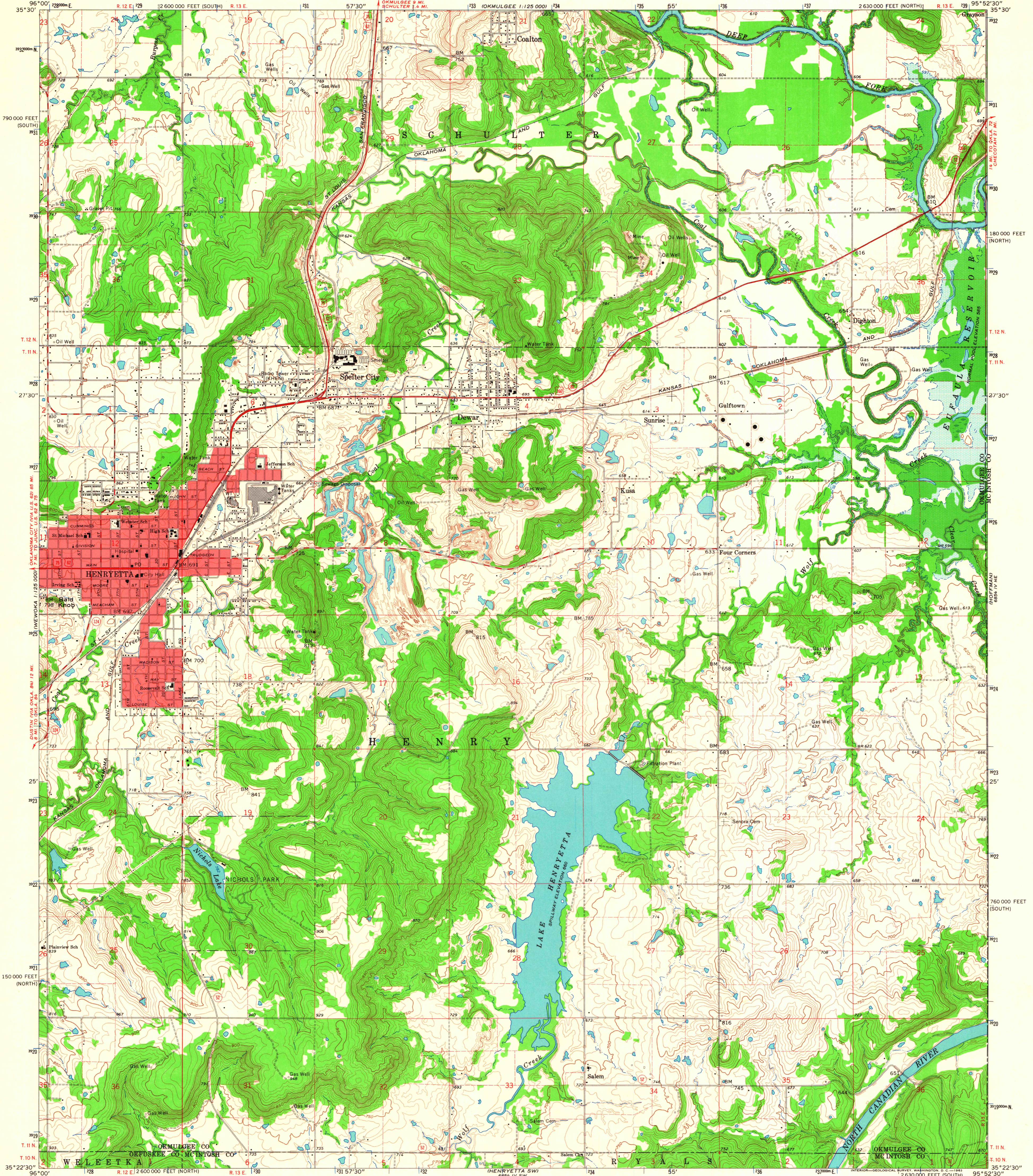
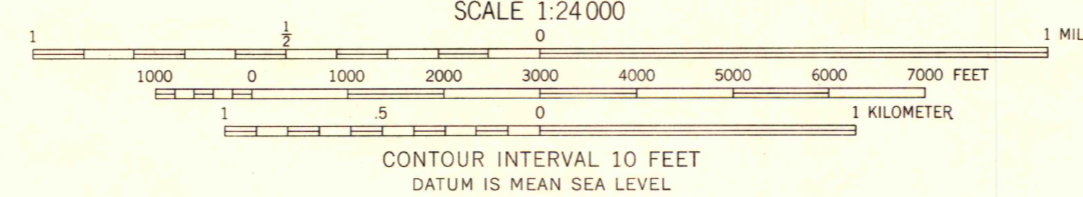
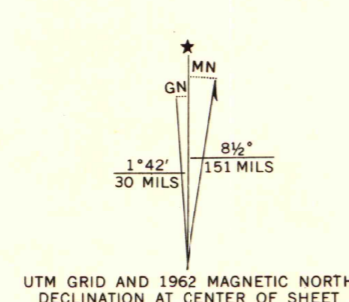


UNITED STATES  
DEPARTMENT OF THE INTERIOR  
GEOLOGICAL SURVEY

HENRYETTA QUADRANGLE  
OKLAHOMA  
7.5 MINUTE SERIES (TOPOGRAPHIC)



Mapped, edited, and published by the Geological Survey  
Control by USGS, USC&GS, and Oklahoma Highway Department  
Topography by photogrammetric methods from aerial  
photographs taken 1959. Field checked 1962  
Polyconic projection. 1927 North American datum  
10,000-foot grids based on Oklahoma coordinate system,  
north and south zones  
1000-meter Universal Transverse Mercator grid ticks,  
zone 15, shown in blue  
Red tint indicates areas in which only landmark buildings are shown  
Blue hatching indicates areas to be submerged by Eufaula Reservoir  
at elevation 585. Areas covered by dashed light-blue pattern  
are subject to controlled inundation  
Fine red dashed lines indicate selected fence and field lines where  
generally visible on aerial photographs. This information is unchecked



ROAD CLASSIFICATION

Heavy-duty	Light-duty
Medium-duty	Unimproved dirt
U.S. Route	State Route

HENRYETTA, OKLA.  
N3522.5-W9552.7/5  
1962  
AMS 6854 IV NW—SERIES V883