

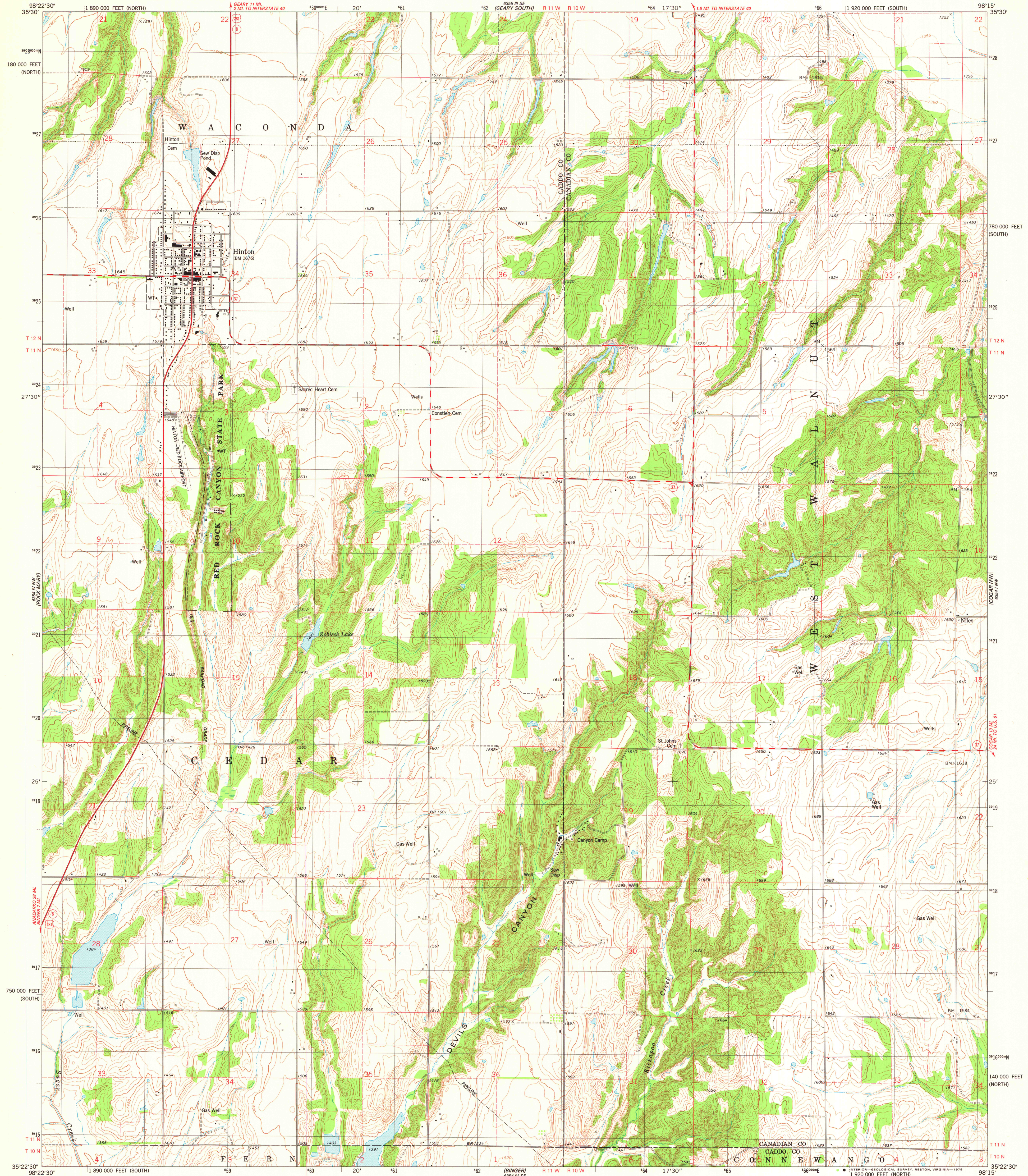
6354 IV NW
(BINGO 607)

UNITED STATES
DEPARTMENT OF THE INTERIOR
GEOLOGICAL SURVEY

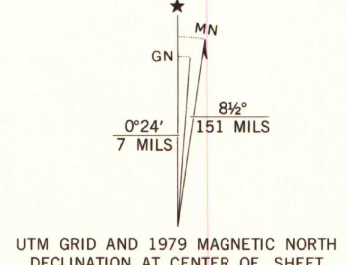


HINTON QUADRANGLE
OKLAHOMA
7.5 MINUTE SERIES (TOPOGRAPHIC)
NE 1/4 BINDER 15' QUADRANGLE

6354 IV SW
(PORT ROAD SW)

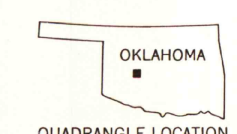


Mapped, edited, and published by the Geological Survey
Control by USGS and NOS/NOAA
Topography by photogrammetric methods from aerial photographs
taken 1974. Field checked 1976. Map edited 1979
Projection: Oklahoma coordinate system, south zone
(Lambert conformal conic)
10,000-foot grid ticks based on Oklahoma coordinate
system, south and north zones
1000-meter Universal Transverse Mercator grid, zone 14
1927 North American datum
Fine red dashed lines indicate selected fence and field lines where
generally visible on aerial photographs. This information is unchecked
There may be private inholdings within the boundaries of
the National or State reservations shown on this map



SCALE 1:24 000
1 000 0 1000 2000 3000 4000 5000 6000 7000 FEET
1 0 1 KILOMETER
CONTOUR INTERVAL 10 FEET
DOTTED LINES REPRESENT 5-FOOT CONTOURS
NATIONAL GEODETIC VERTICAL DATUM OF 1929

THIS MAP COMPLIES WITH NATIONAL MAP ACCURACY STANDARDS
FOR SALE BY U.S. GEOLOGICAL SURVEY, DENVER, COLORADO 80225, OR RESTON, VIRGINIA 22092
AND BY THE OKLAHOMA GEOLOGICAL SURVEY, NORMAN, OKLAHOMA 73069
A FOLDER DESCRIBING TOPOGRAPHIC MAPS AND SYMBOLS IS AVAILABLE ON REQUEST



MAP AND AIR PHOTO
LIBRARY

DEC 10 1979

University of Wisconsin
Madison

ROAD CLASSIFICATION
Primary highway, hard surface
Secondary highway, hard surface
Unimproved road
Interstate Route
U. S. Route
State Route

HINTON, OKLA.
NE 1/4 BINDER 15' QUADRANGLE
N3522.5-W9815.7.5
1979

AMS 6354 IV NE-SERIES Y883