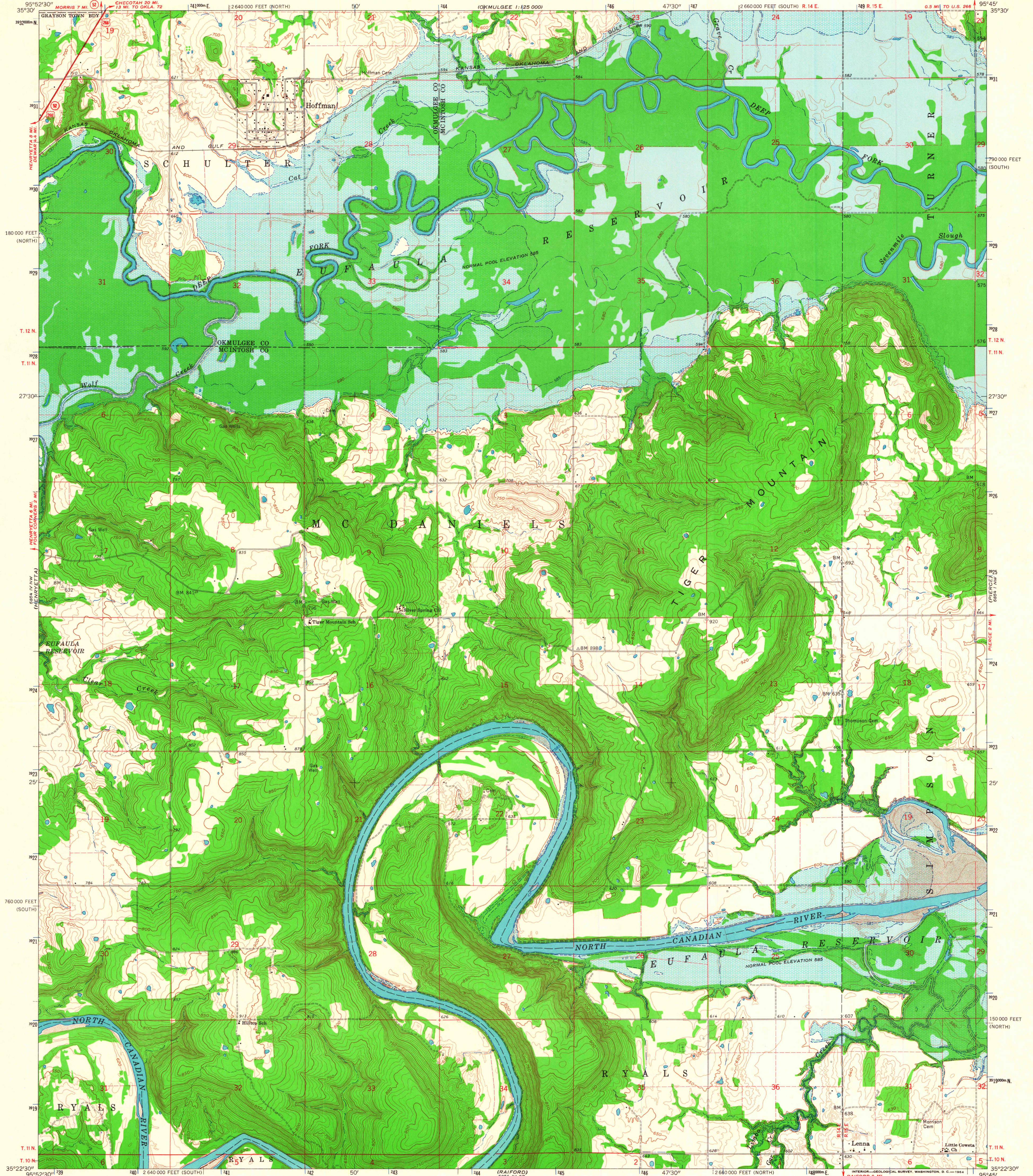
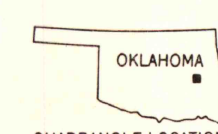
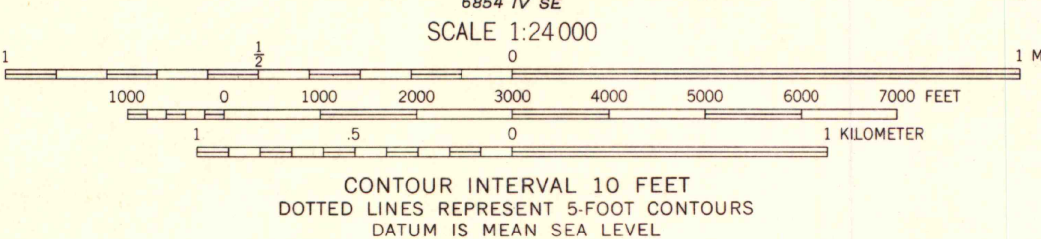
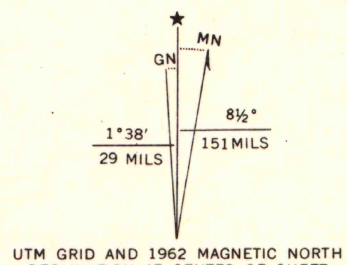


UNITED STATES
DEPARTMENT OF THE INTERIOR
GEOLOGICAL SURVEY

HOFFMAN QUADRANGLE
OKLAHOMA
7.5 MINUTE SERIES (TOPOGRAPHIC)



Mapped, edited, and published by the Geological Survey
Control by USGS, USC&GS, and Oklahoma Highway Department
Topography by photogrammetric methods from aerial
photographs taken 1959. Field checked 1962
Polyconic projection. 1927 North American datum
10,000-foot grids based on Oklahoma coordinate system,
north and south zones
1000-meter Universal Transverse Mercator grid ticks,
zone 15, shown in blue
Blue hatching indicates areas to be submerged by Eufaula Reservoir
at elevation 585. Areas covered by dashed light-blue pattern
are subject to controlled inundation
Fine red dashed lines indicate selected fence and field lines where
generally visible on aerial photographs. This information is unchecked



ROAD CLASSIFICATION
Heavy-duty ——— Light-duty ———
Unimproved dirt - - - - -
U. S. Route State Route

HOFFMAN, OKLA.
N3522.5—W9545.7.5
1962
AMS 6854 IV NE-SERIES V883

THIS MAP COMPLIES WITH NATIONAL MAP ACCURACY STANDARDS
FOR SALE BY U. S. GEOLOGICAL SURVEY, DENVER 25, COLORADO OR WASHINGTON 25, D. C.
A FOLDER DESCRIBING TOPOGRAPHIC MAPS AND SYMBOLS IS AVAILABLE ON REQUEST