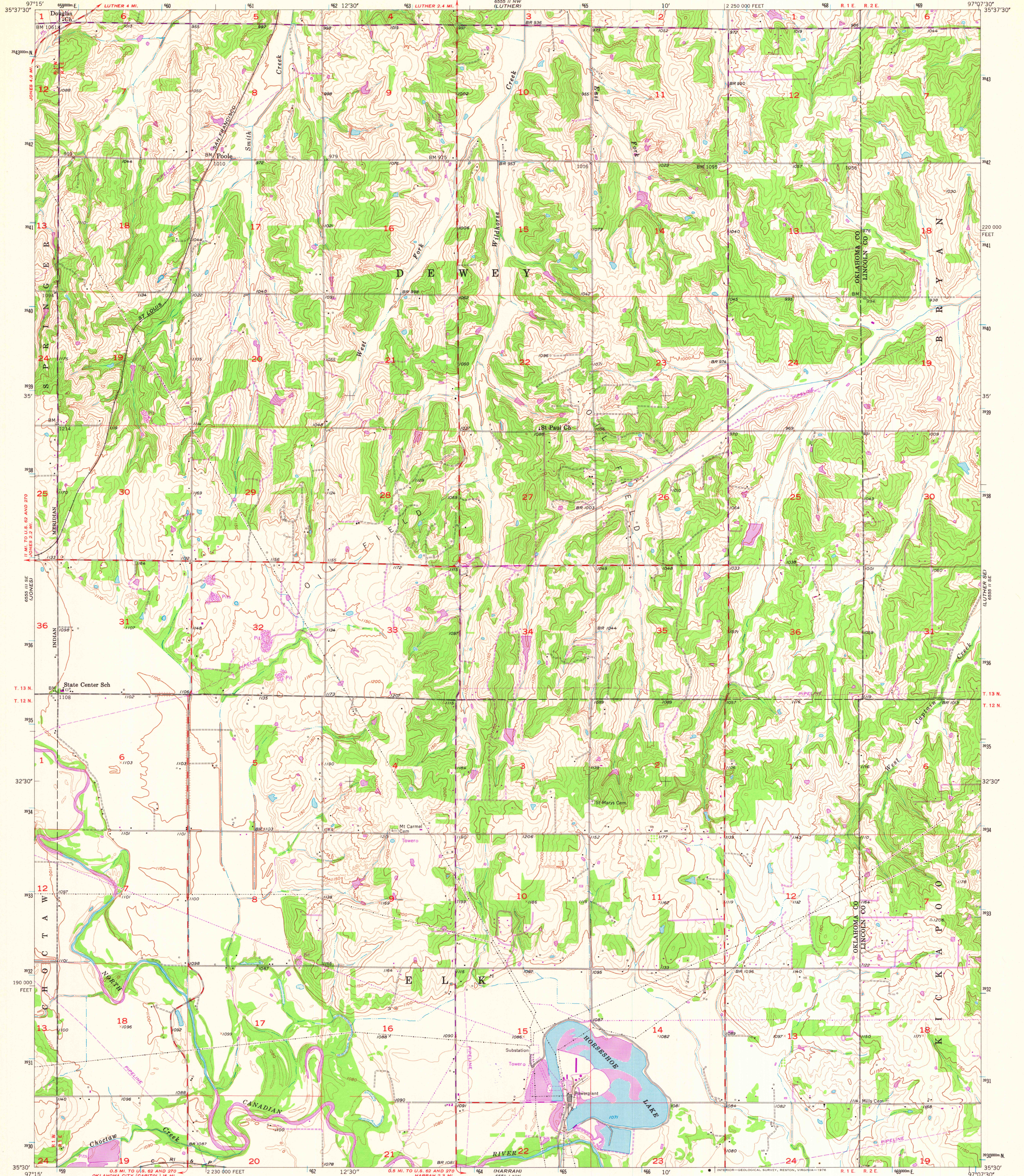
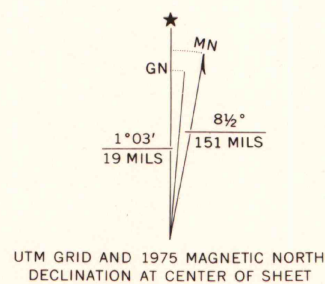


UNITED STATES
DEPARTMENT OF THE INTERIOR
GEOLOGICAL SURVEY

HORSESHOE LAKE QUADRANGLE
OKLAHOMA
7.5 MINUTE SERIES (TOPOGRAPHIC)



Mapped, edited, and published by the Geological Survey
Control by USGS and USC&GS
Topography from aerial photographs by Kelsh plotter
Aerial photographs taken 1954. Field check 1956
Polyconic projection. 1927 North American datum
10,000-foot grid based on Oklahoma coordinate system, north zone
1000-metre Universal Transverse Mercator grid ticks,
zone 14, shown in blue
Revisions shown in purple compiled from aerial photographs
taken 1969 and 1975. Woodland areas recompiled 1969
This information not field checked



THIS MAP COMPLIES WITH NATIONAL MAP ACCURACY STANDARDS
FOR SALE BY U.S. GEOLOGICAL SURVEY, DENVER, COLORADO 80225, OR RESTON, VIRGINIA 22092
AND BY THE OKLAHOMA GEOLOGICAL SURVEY, NORMAN, OKLAHOMA 73069
A FOLDER DESCRIBING TOPOGRAPHIC MAPS AND SYMBOLS IS AVAILABLE ON REQUEST

MAP AND AIR PHOTO LIBRARY
University of Wisconsin, Madison

ROAD CLASSIFICATION
Medium-duty ——— Light duty ———
Unimproved dirt - - - - -

HORSESHOE LAKE, OKLA.
N3530-W9707.5/7.5

1956
PHOTOREVISED 1969 AND 1975
AMS 6555 II SW-SERIES V883