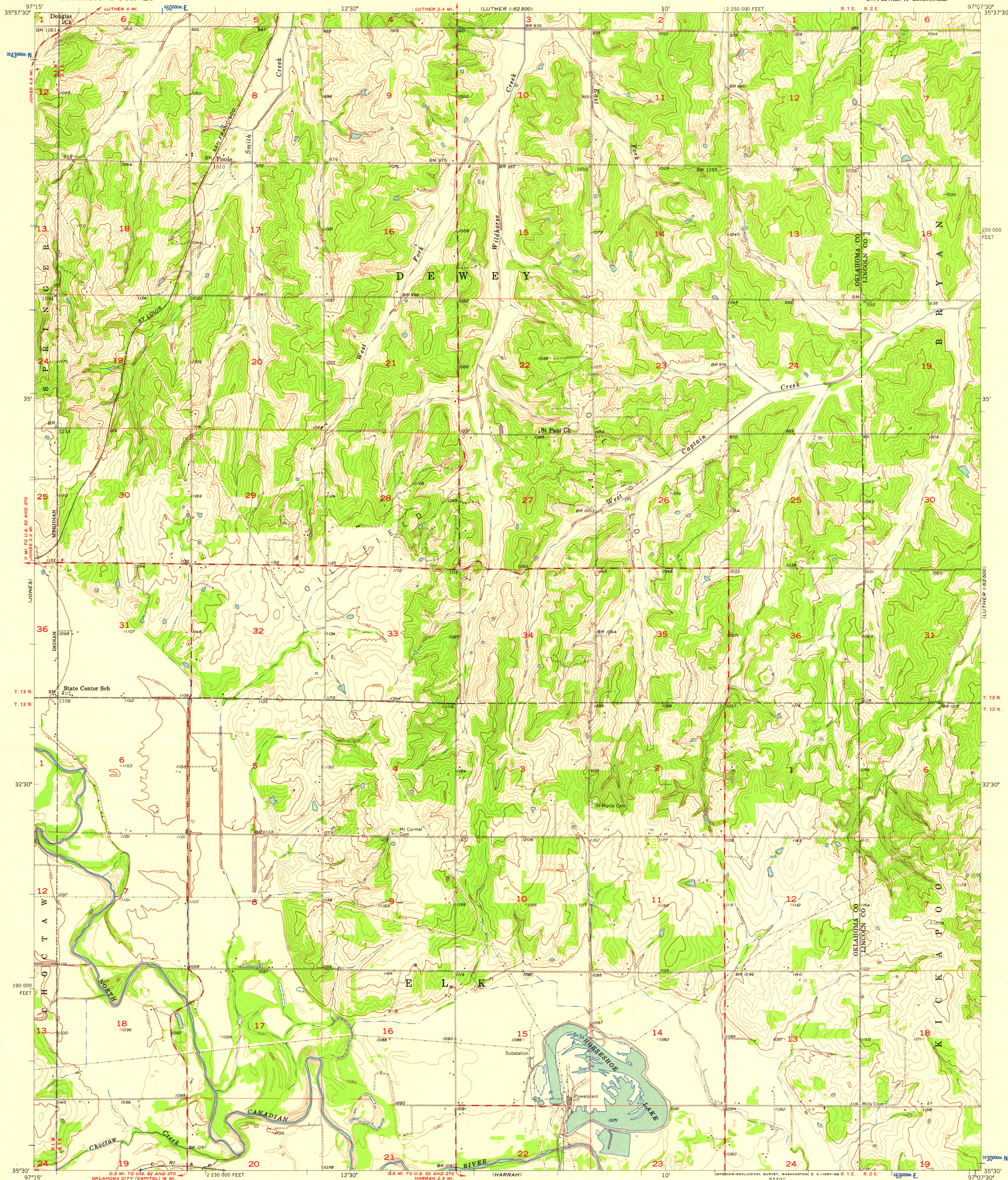
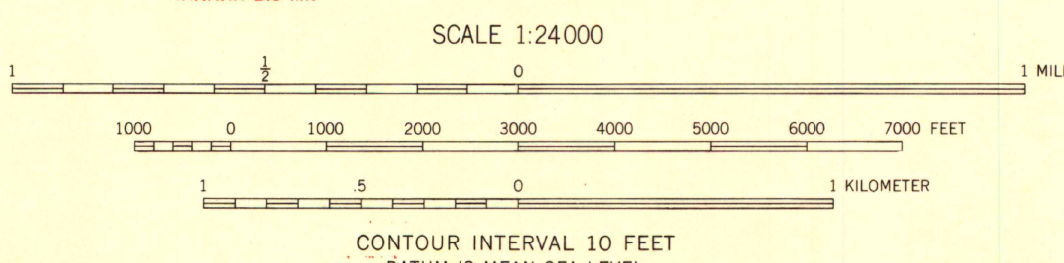


UNITED STATES
DEPARTMENT OF THE INTERIOR
GEOLOGICAL SURVEY

HORSESHOE LAKE QUADRANGLE
OKLAHOMA
7.5 MINUTE SERIES (TOPOGRAPHIC)
SW/4 LUTHER 15' QUADRANGLE



Mapped, edited, and published by the Geological Survey
Control by USGS and USC&GS
Topography from aerial photographs by Kelsh plotter
Aerial photographs taken 1954. Field check 1956
Polyconic projection. 1927 North American datum
10,000-foot grid based on Oklahoma coordinate system, north zone
1000-meter Universal Transverse Mercator grid ticks,
zone 14, shown in blue



ROAD CLASSIFICATION
Medium-duty ——— Light-duty ———
Unimproved dirt ———



HORSESHOE LAKE, OKLA.
SW/4 LUTHER 15' QUADRANGLE
N3530-W9707.5/7.5

THIS MAP COMPLIES WITH NATIONAL MAP ACCURACY STANDARDS
FOR SALE BY U. S. GEOLOGICAL SURVEY, DENVER 2, COLORADO OR WASHINGTON 25, D. C.
A FOLDER DESCRIBING TOPOGRAPHIC MAPS AND SYMBOLS IS AVAILABLE ON REQUEST

1956
UNIVERSITY OF WISCONSIN
Department of Geography