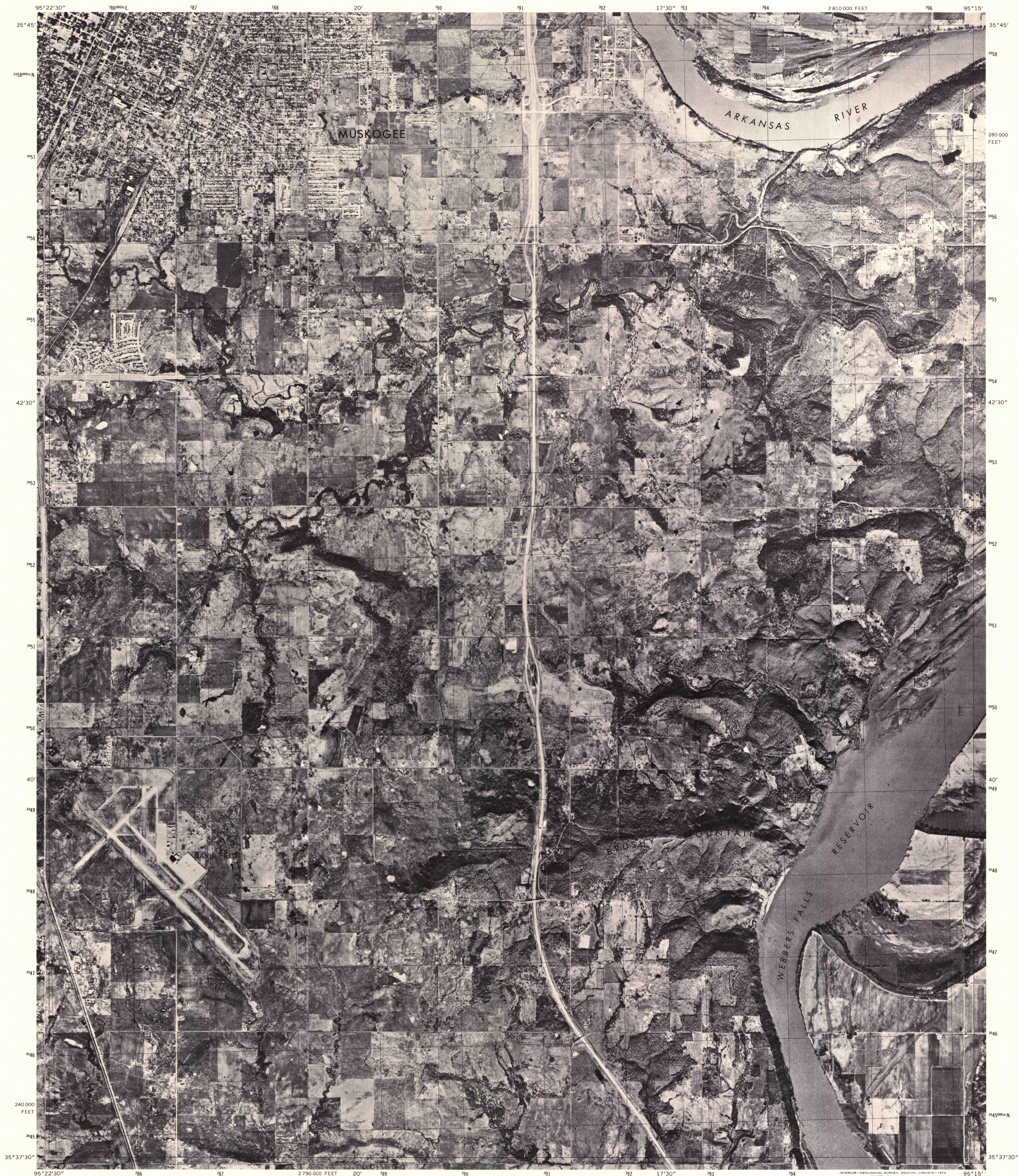
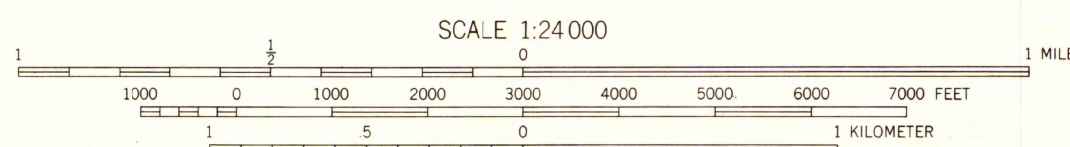
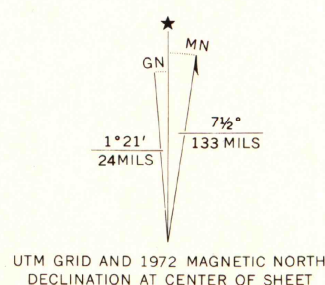


UNITED STATES
DEPARTMENT OF THE INTERIOR
GEOLOGICAL SURVEY

KEEFETON NE QUADRANGLE
OKLAHOMA
7.5 MINUTE SERIES ORTHOPHOTOQUAD



Produced and published by the Geological Survey
Control by USGS and USC&GS
Orthophotomosaic prepared from 1:80,000-scale
aerial photographs taken December 22, 1972
Projection and 10,000-foot grid ticks: Oklahoma coordinate
system, north zone (Lambert conformal conic)
1000-meter Universal Transverse Mercator grid,
zone 15. 1927 North American datum
Photomosaic transformed by scanning techniques
which may produce double or mismatched images;
use the mean of image positions for map point



MAP AND AIR PHOTO LIBRARY
University of Wisconsin, Madison

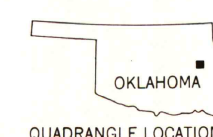
THIS MAP COMPLIES WITH NATIONAL MAP ACCURACY STANDARDS
FOR SALE BY U.S. GEOLOGICAL SURVEY, DENVER, COLORADO 80225, OR RESTON, VIRGINIA 22092
AND BY THE OKLAHOMA GEOLOGICAL SURVEY, NORMAN, OKLAHOMA 73069

ADJOINING ORTHOPHOTOQUADS

WARRICK NE 6955 III NE 6955 III NE	WARRICK SE 6955 III SE 6955 III SE	WARRICK SW 6955 III SW 6955 III SW
KEEFETON NE 6955 III NE 6955 III NE	KEEFETON SE 6955 III SE 6955 III SE	KEEFETON SW 6955 III SW 6955 III SW
KEEFETON NW 6955 III NW 6955 III NW	KEEFETON NE 6955 III NE 6955 III NE	KEEFETON SE 6955 III SE 6955 III SE

PRINCIPAL NUMBERED HIGHWAYS

Interstate Route U. S. Route State Route



This quadrangle area also covered by NE/4
of Keffeton 1:62,500-scale topographic map

KEEFETON NE, OKLA.
N3537.5-W9515/7.5

1972

AMS 6955 III NE-SERIES V083