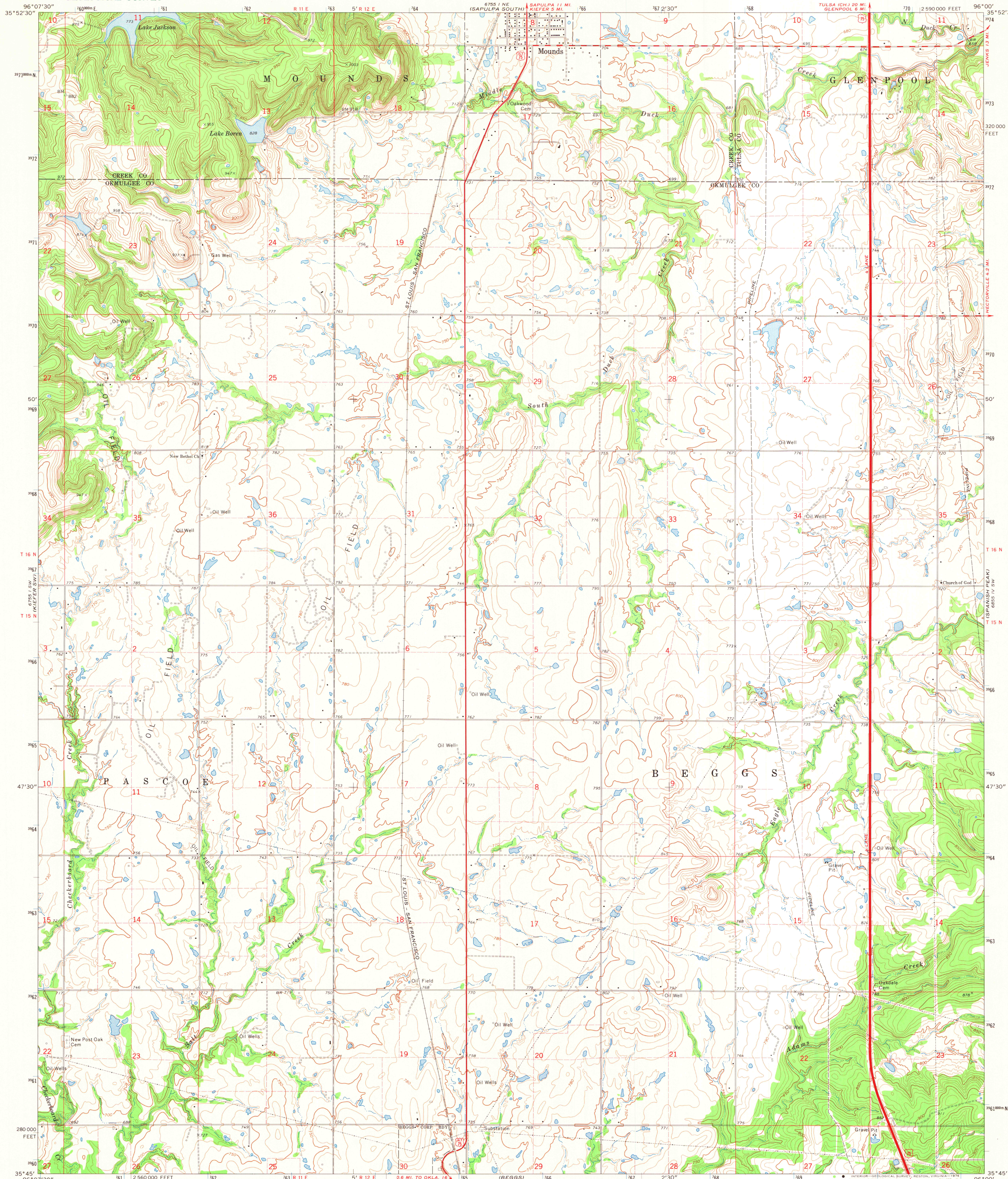


UNITED STATES
DEPARTMENT OF THE INTERIOR
GEOLOGICAL SURVEY

LAKE BOREN QUADRANGLE
OKLAHOMA
7.5 MINUTE SERIES (TOPOGRAPHIC)



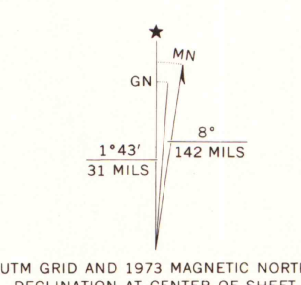
Mapped, edited, and published by the Geological Survey

Control by USGS and NOS/NOAA

Topography by photogrammetric methods from aerial
photographs taken 1972. Field checked 1973

Projection and 10,000-foot grid ticks: Oklahoma coordinate
system, north zone (Lambert conformal conic)
1000-metre Universal Transverse Mercator grid ticks,
zone 14, shown in blue. 1927 North American datum

Fine red dashed lines indicate selected fence and field lines where
generally visible on aerial photographs. This information is unchecked



THIS MAP COMPLIES WITH NATIONAL MAP ACCURACY STANDARDS
FOR SALE BY U.S. GEOLOGICAL SURVEY, DENVER, COLORADO 80225, OR RESTON, VIRGINIA 22092
AND BY THE OKLAHOMA GEOLOGICAL SURVEY, NORMAN, OKLAHOMA 73069
A FOLDER DESCRIBING TOPOGRAPHIC MAPS AND SYMBOLS IS AVAILABLE ON REQUEST

Primary highway,
hard surface. Light-duty road, hard or
improved surface.
Secondary highway,
hard surface. Unimproved road. ———
Interstate Route U. S. Route State Route

MAP AND AIR PHOTO
LIBRARY

MAR 23 1976

LAKE BOREN, OKLA.
SE 1/4 KIEFER 15' QUADRANGLE
N3545-W9600/7.5

1973

AMS 6755 I SE-SERIES Y883

University of Wisconsin