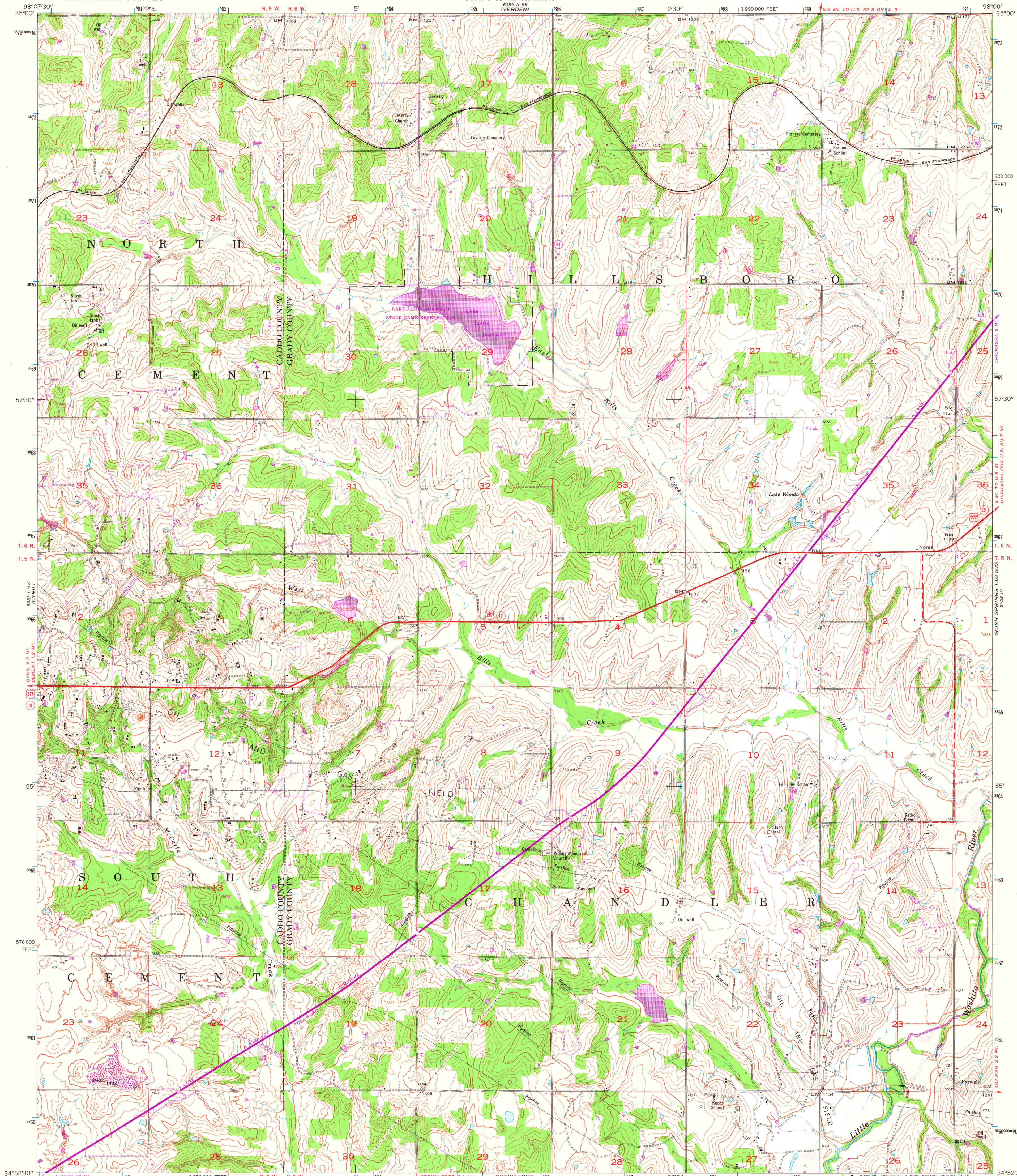


UNITED STATES  
DEPARTMENT OF THE INTERIOR  
GEOLOGICAL SURVEY

UNITED STATES  
DEPARTMENT OF THE ARMY  
CORPS OF ENGINEERS

LAVERTY QUADRANGLE  
OKLAHOMA  
7.5 MINUTE SERIES (TOPOGRAPHIC)  
NE 1/4 CEMENT 15' QUADRANGLE



Map by the Army Map Service  
Published for civil use by the Geological Survey

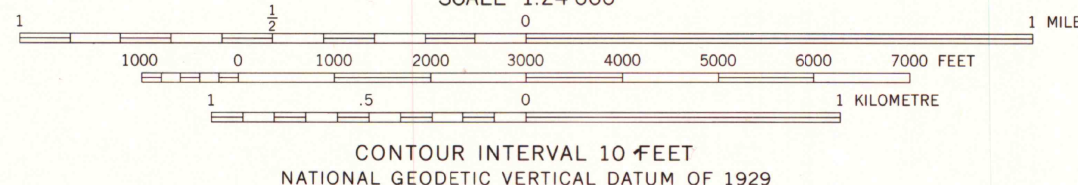
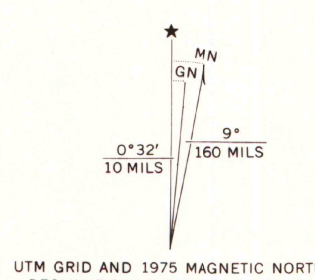
Control by USGS, USC&GS, USCE, and Oklahoma Geodetic Survey

Topography by photogrammetric methods from aerial photographs  
taken 1947. Culture and drainage revised from aerial photographs  
taken 1954. Field check 1956

Polyconic projection. 1927 North American datum  
10,000-foot grid based on Oklahoma coordinate system, south zone  
1000-metre Universal Transverse Mercator grid ticks,  
zone 14, shown in blue

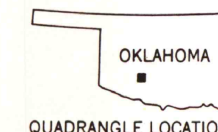
Unchecked elevations are shown in brown

Revisions shown in purple compiled by the Geological Survey from  
aerial photographs taken 1975. This information not field checked



THIS MAP COMPLIES WITH NATIONAL MAP ACCURACY STANDARDS  
FOR SALE BY U.S. GEOLOGICAL SURVEY, DENVER, COLORADO 80225, OR RESTON, VIRGINIA 22092  
AND BY THE OKLAHOMA GEOLOGICAL SURVEY, NORMAN, OKLAHOMA 73069  
A FOLDER DESCRIBING TOPOGRAPHIC MAPS AND SYMBOLS IS AVAILABLE ON REQUEST

ROAD CLASSIFICATION  
Heavy-duty ———— Light-duty ————  
Medium-duty ———— Unimproved dirt ————  
U.S. Route ———— State Route ————



MAP AND AIR PHOTO  
LIBRARY

AUG 17 1976

University of Wisconsin  
Madison

LAVERTY, OKLA.  
NE 1/4 CEMENT 15' QUADRANGLE  
N 3452.5 — W 9800.7/5

1956

PHOTOREVISED 1975  
AMS 6353 1 NE—SERIES V883