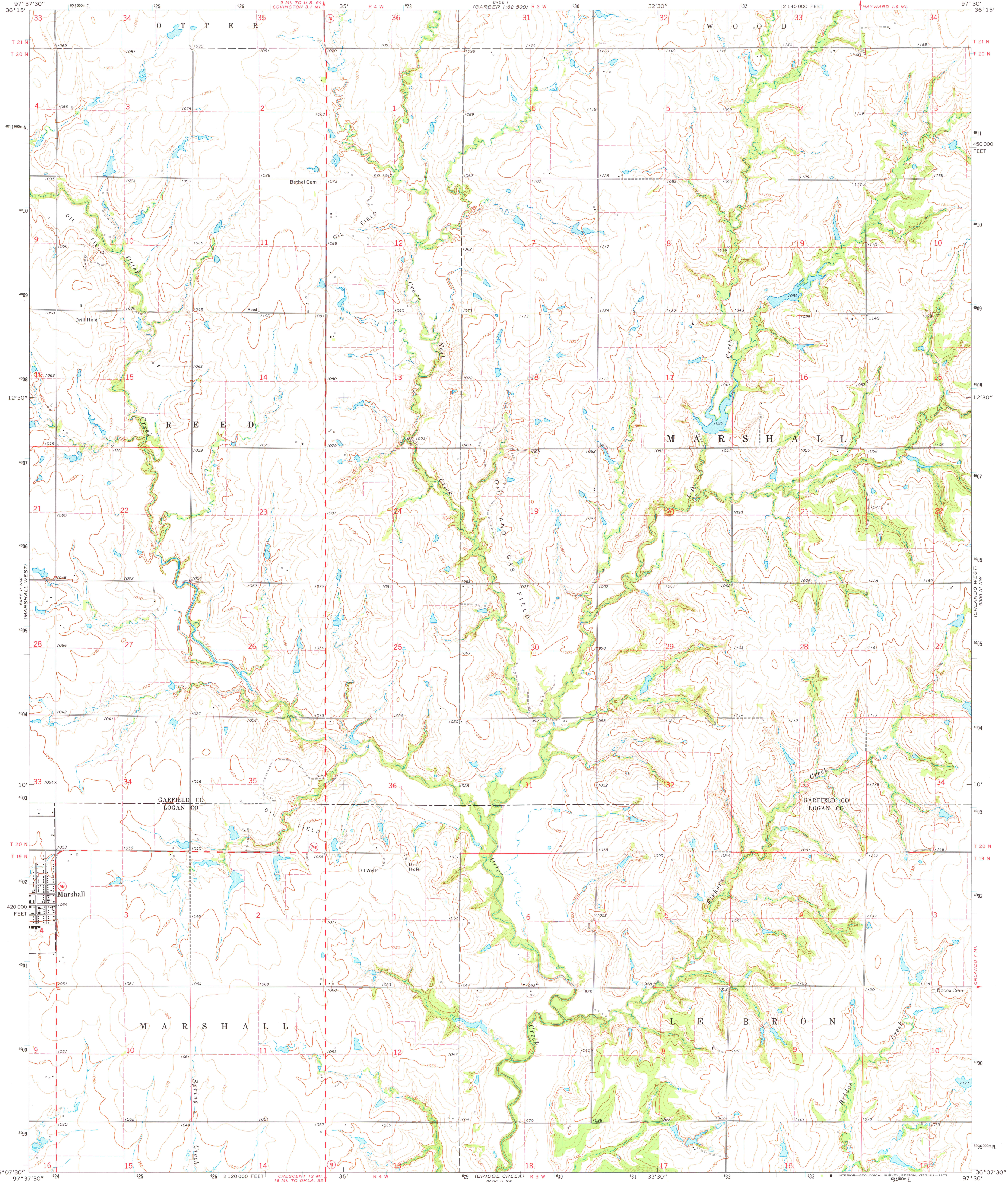


UNITED STATES
DEPARTMENT OF THE INTERIOR
GEOLOGICAL SURVEY

STATE OF OKLAHOMA

MARSHALL EAST QUADRANGLE
OKLAHOMA
7.5 MINUTE SERIES (TOPOGRAPHIC)



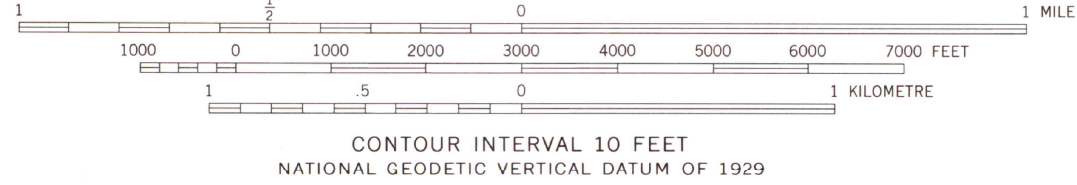
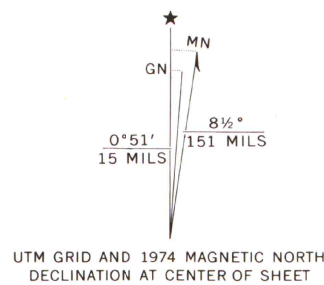
Mapped, edited, and published by the Geological Survey in cooperation with the Oklahoma Highway Department, Oklahoma Water Resources Board, and Oklahoma State Soil Conservation Board

Control by USGS and NOS/NOAA

Topography by photogrammetric methods from aerial photographs taken 1973. Field checked 1974

Projection and 10,000-foot grid ticks: Oklahoma coordinate system, north zone (Lambert conformal conic) 1000-metre Universal Transverse Mercator grid ticks, zone 14, shown in blue. 1927 North American datum

Fine red dashed lines indicate selected fence and field lines where generally visible on aerial photographs. This information is unchecked



ROAD CLASSIFICATION

Primary highway, hard surface. Light-duty road, hard or improved surface.

Secondary highway, hard surface. Unimproved road.

Interstate Route. U. S. Route. State Route.

MAP AND AIR PHOTO LIBRARY MARSHALL EAST, OKLA.
N3607.5-W9730/7.5

JUN 8 1977 1974

AMS 6456 II NE-SERIES V883

University of Wisconsin
Madison