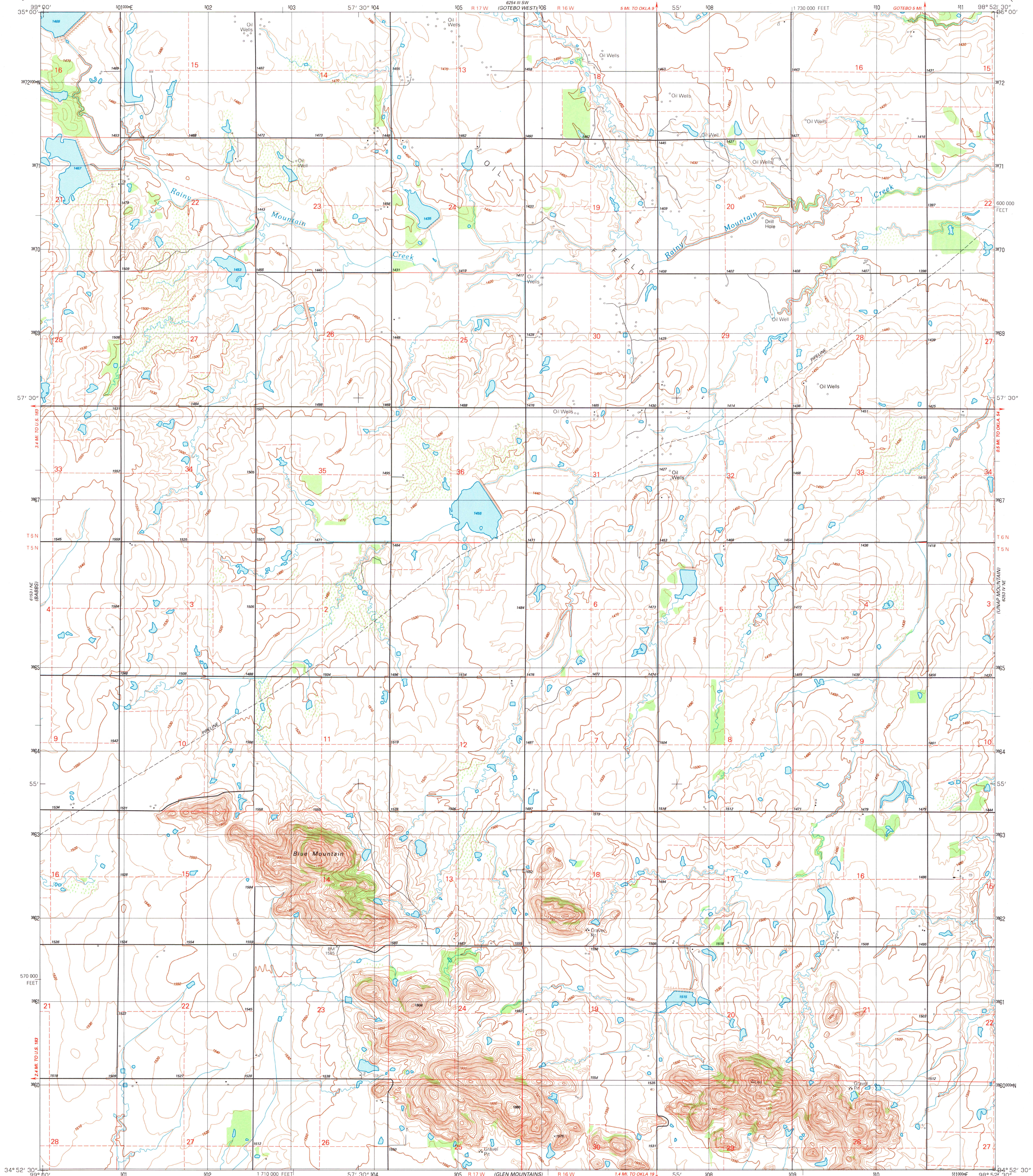


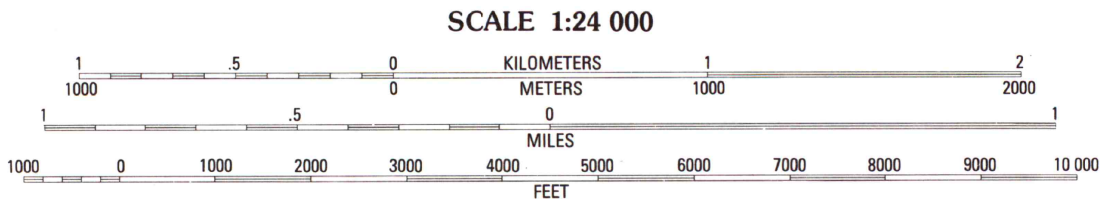
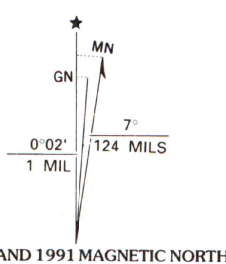
UNITED STATES
DEPARTMENT OF THE INTERIOR
GEOLOGICAL SURVEY

STATE OF OKLAHOMA

RAINY MOUNTAIN CREEK QUADRANGLE
OKLAHOMA—KIOWA CO.
7.5 MINUTE SERIES (TOPOGRAPHIC)
NW/4 COOPERTON 15' QUADRANGLE

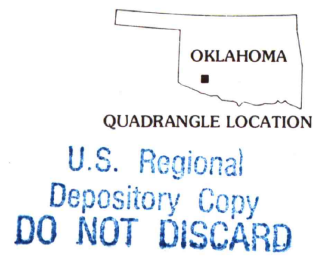


Produced by the United States Geological Survey
in cooperation with the Oklahoma Highway Department
Oklahoma Water Resources Board and Oklahoma State Soil
Conservation Board
Control by USGS and NOS/NOAA
Compiled from aerial photographs taken 1987
Field checked 1988. Map edited 1991
Projection and 10,000-foot grid ticks: Oklahoma coordinate
system, south zone (Lambert conformal conic)
1000-meter Universal Transverse Mercator grid, zone 14
1927 North American Datum
The difference between 1927 North American Datum and North
American Datum of 1983 (NAD 83) for 7.5-minute intersections
is given in USGS Bulletin 1875. The NAD 83 is shown by
dashed corner ticks
Fine red dashed lines indicate selected fence and field lines where
generally visible on aerial photographs. This information is unchecked



THIS MAP COMPLIES WITH NATIONAL MAP ACCURACY STANDARDS
FOR SALE BY U. S. GEOLOGICAL SURVEY, DENVER, COLORADO 80225, OR RESTON, VIRGINIA 22092
AND OKLAHOMA GEOLOGICAL SURVEY, NORMAN, OKLAHOMA 73069
A FOLDER DESCRIBING TOPOGRAPHIC MAPS AND SYMBOLS IS AVAILABLE ON REQUEST

ROAD CLASSIFICATION
Primary highway, hard surface Light-duty road, hard or improved surface
Secondary highway, hard surface Unimproved road
Interstate Route U. S. Route State Route



RAINY MOUNTAIN CREEK, OKLA.
NW/4 COOPERTON 15' QUADRANGLE
34098-H8-T-024
1991
DMA 6253 IV NW-SERIES V883