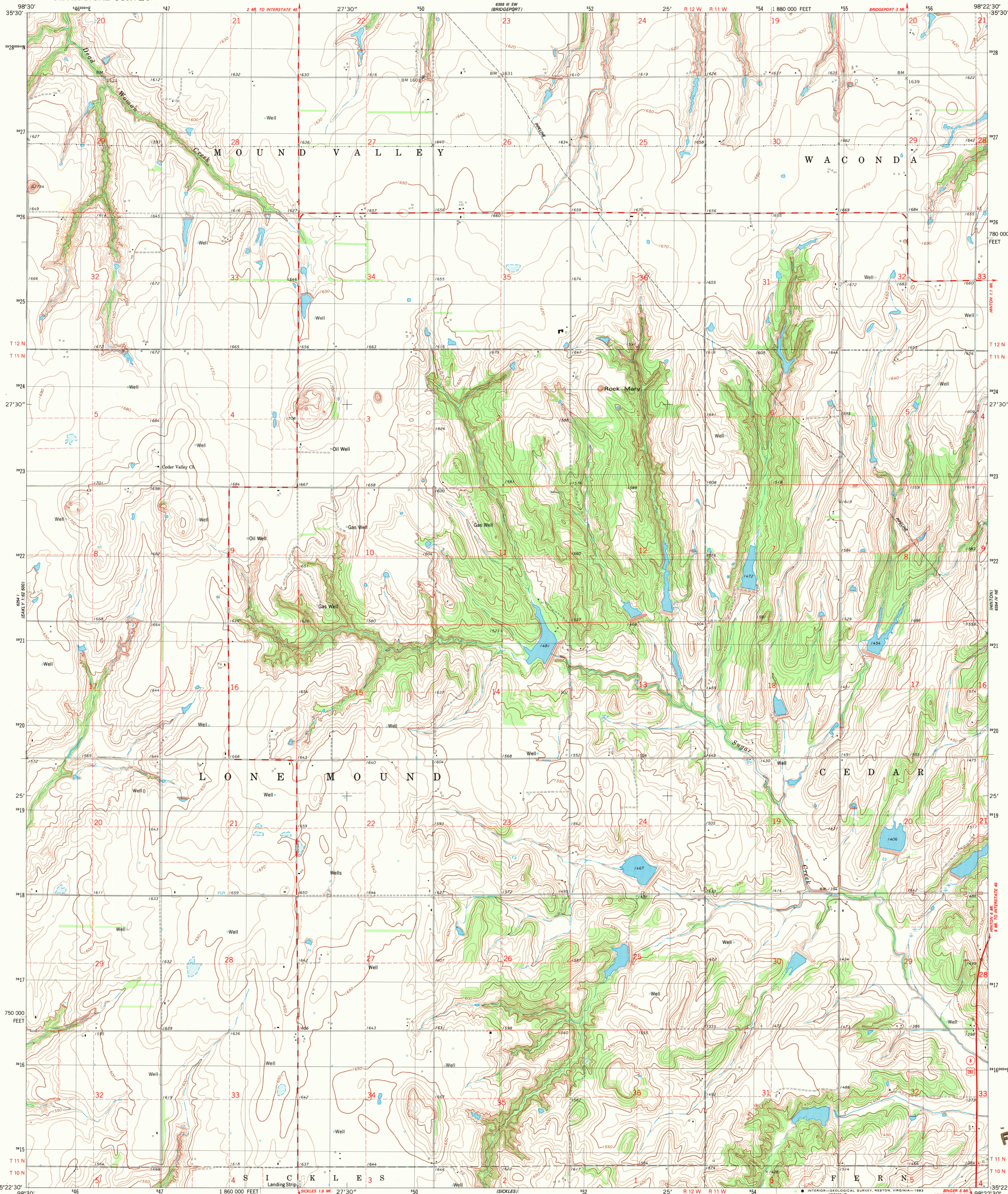
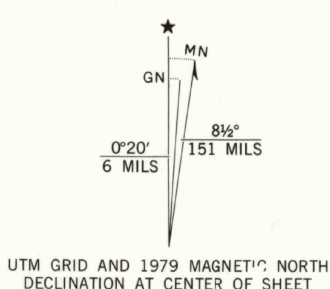


UNITED STATES
DEPARTMENT OF THE INTERIOR
GEOLOGICAL SURVEY

ROCK MARY QUADRANGLE
OKLAHOMA—CADDO CO.
7.5 MINUTE SERIES (TOPOGRAPHIC)
NW 1/4 BINDER 15' QUADRANGLE



Mapped, edited, and published by the Geological Survey
Control by USGS and NOS/NOAA
Topography by photogrammetric methods from aerial photographs
taken 1974. Field checked 1976. Map edited 1979
Projection and 10,000-foot grid ticks: Oklahoma coordinate
system, south zone (Lambert conformal conic)
1000-meter Universal Transverse Mercator grid, zone 14
1927 North American datum
To place on the predicted North American Datum 1983,
move the projection lines 3 meters south and
31 meters east as shown by dashed corner ticks
Fine red dashed lines indicate selected fence and field lines where
generally visible on aerial photographs. This information is unchecked



SCALE 1:24 000
1 0000 0 1000 2000 3000 4000 5000 6000 7000 FEET
1 5 10 15 20 25 30 35 40 45 50 KILOMETER
CONTOUR INTERVAL 10 FEET
NATIONAL GEODETIC VERTICAL DATUM OF 1929



ROAD CLASSIFICATION
Primary highway, hard surface
Secondary highway, hard surface
Unimproved road
Interstate Route
U. S. Route
State Route

ROCK MARY, OKLA.
NW 1/4 BINDER 15' QUADRANGLE
N3522.5-W9822.5/7.5

1979

AMS 6354 IV NW-SERIES V883

RETURN TO:
USGS AND HISTORICAL MAP ARCHIVES

FEB 09 1994