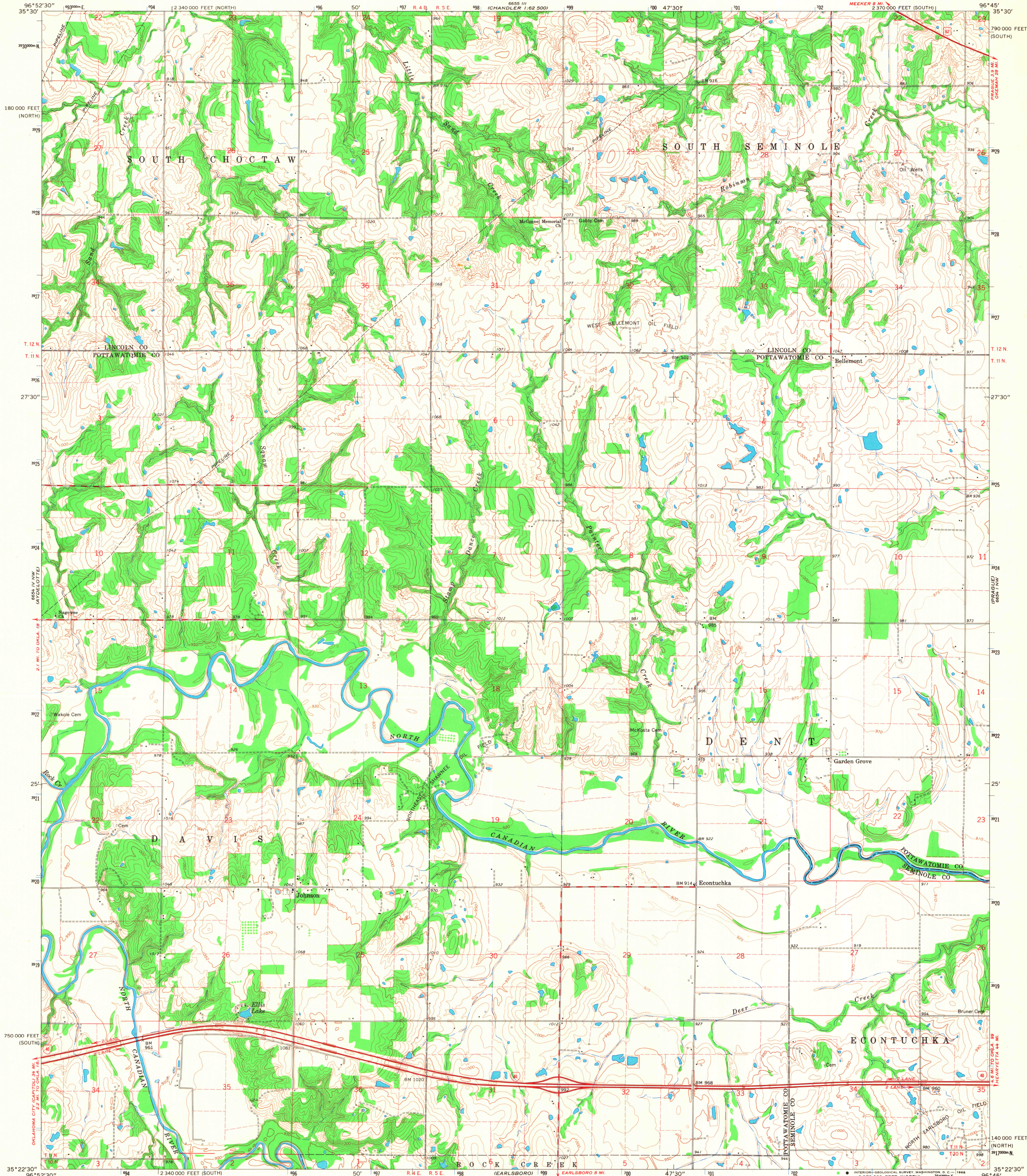


CHANDLER 1:62,500

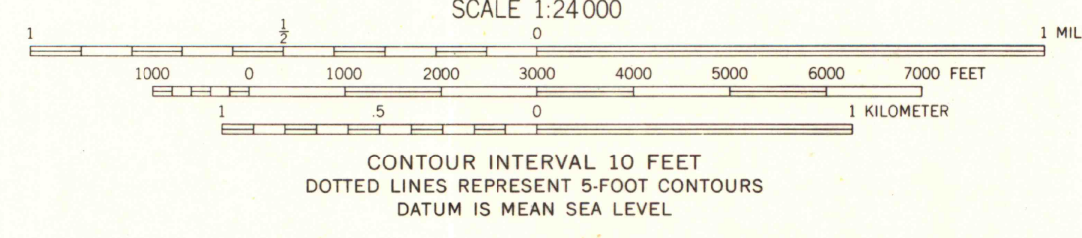
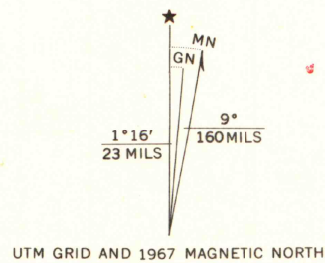
UNITED STATES
DEPARTMENT OF THE INTERIOR
GEOLOGICAL SURVEY

SHAWNEE NE QUADRANGLE
OKLAHOMA
7.5 MINUTE SERIES (TOPOGRAPHIC)
NE/4 SHAWNEE 15' QUADRANGLE

6654 IV NW
(STROUD 1:62,500)



Mapped, edited, and published by the Geological Survey
Control by USGS and USC&GS
Topography by photogrammetric methods from aerial
photographs taken 1964. Field checked 1967
Polyconic projection, 1927 North American datum
10,000-foot grids based on Oklahoma coordinate system,
south and north zones
1000-meter Universal Transverse Mercator grid ticks,
zone 14, shown in blue
Fine red dashed lines indicate selected fence and field lines where
generally visible on aerial photographs. This information is unchecked



MAP AND AIR PHOTO LIBRARY
University of Wisconsin



ROAD CLASSIFICATION

Heavy-duty	Light-duty
Medium-duty	Unimproved dirt
Interstate Route	U.S. Route

SHAWNEE NE, OKLA.
NE/4 SHAWNEE 15' QUADRANGLE
N3522.5-W9645/7.5

1967

AMS 6654 IV NE-SERIES V883

THIS MAP COMPLIES WITH NATIONAL MAP ACCURACY STANDARDS
FOR SALE BY U.S. GEOLOGICAL SURVEY, DENVER, COLORADO 80225, OR WASHINGTON, D.C. 20242
A FOLDER DESCRIBING TOPOGRAPHIC MAPS AND SYMBOLS IS AVAILABLE ON REQUEST