

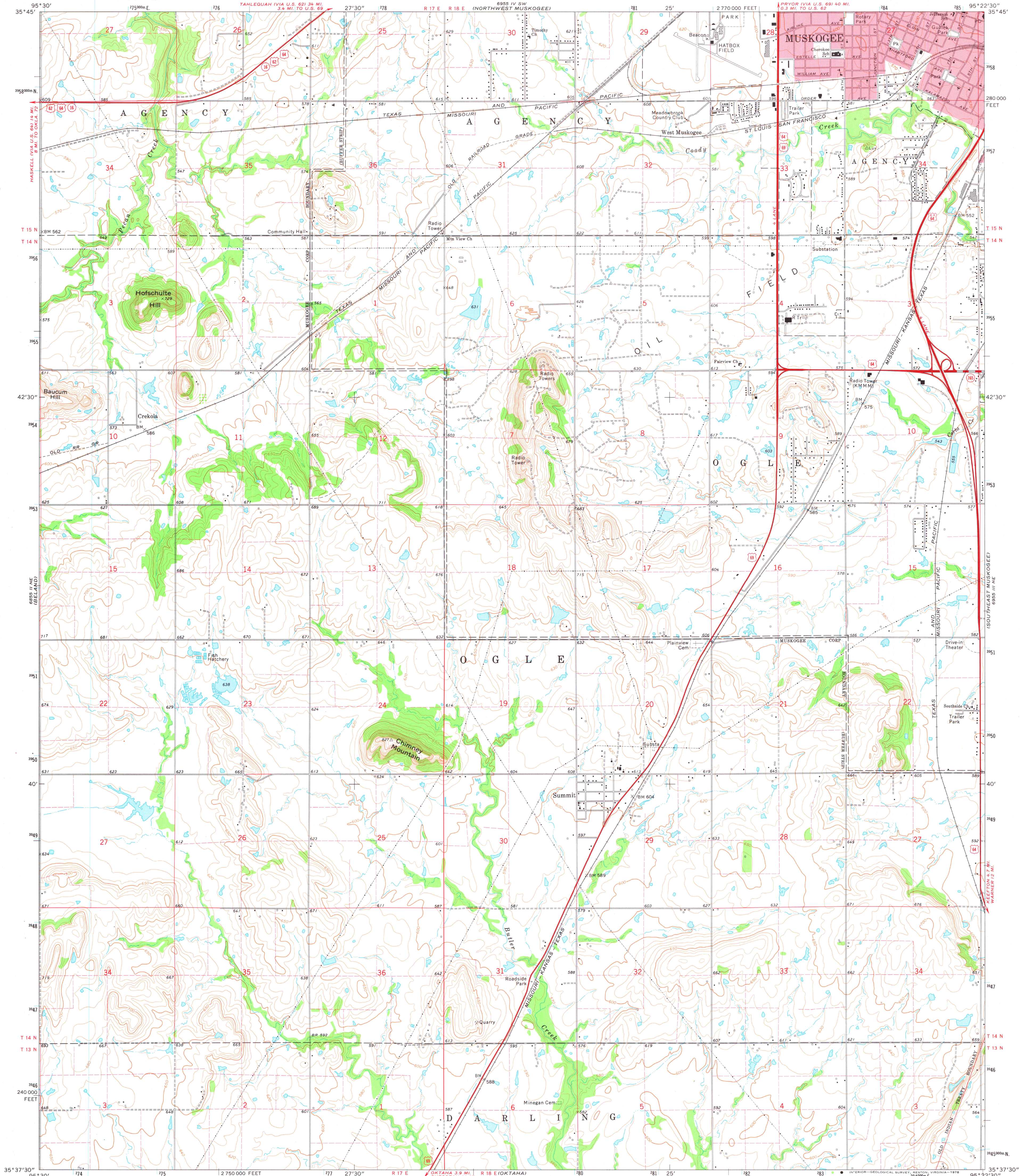
UNITED STATES
DEPARTMENT OF THE INTERIOR
GEOLOGICAL SURVEY

SOUTHWEST MUSKOGEE QUADRANGLE
OKLAHOMA—MUSKOGEE CO.

7.5 MINUTE SERIES (TOPOGRAPHIC)

NW/4 KEEFETON 15' QUADRANGLE

6955 IV SE
(MUSKOGEE)



Mapped, edited, and published by the Geological Survey

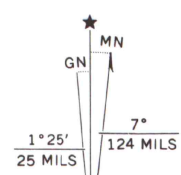
Control by USGS and NOS/NOAA

Topography by photogrammetric methods from aerial
photographs taken 1973. Field checked 1974

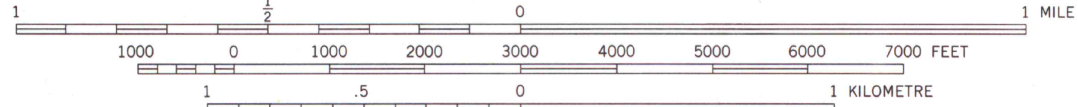
Projection and 10,000-foot grid ticks: Oklahoma coordinate
system, north zone (Lambert conformal conic)
1000-metre Universal Transverse Mercator grid ticks,
zone 15, shown in blue. 1927 North American datum

Red tint indicates areas in which only landmark buildings are shown

Fine red dashed lines indicate selected fence and field lines where
generally visible on aerial photographs. This information is unchecked



UTM GRID AND 1974 MAGNETIC NORTH
DECLINATION AT CENTER OF SHEET



CONTOUR INTERVAL 10 FEET
NATIONAL GEODETIC VERTICAL DATUM OF 1929

THIS MAP COMPLIES WITH NATIONAL MAP ACCURACY STANDARDS
FOR SALE BY U. S. GEOLOGICAL SURVEY, DENVER, COLORADO 80225, OR RESTON, VIRGINIA 22092
AND BY THE OKLAHOMA GEOLOGICAL SURVEY, NORMAN, OKLAHOMA 73069
A FOLDER DESCRIBING TOPOGRAPHIC MAPS AND SYMBOLS IS AVAILABLE ON REQUEST

ROAD CLASSIFICATION

- | | |
|------------------------------------|--|
| Primary highway,
hard surface | Light-duty road, hard or
improved surface |
| Secondary highway,
hard surface | Unimproved road |
| Interstate Route | U. S. Route |
| | State Route |



MAP AND AIR PHOTO
SOUTHWEST MUSKOGEE, OKLA.
LIBRARY

NW/4 KEEFETON 15' QUADRANGLE
N3537.5—W9522.5/7.5

AUG 30 1978

1974

University of Wisconsin
Madison

AMS 6955 III NW—SERIES V83