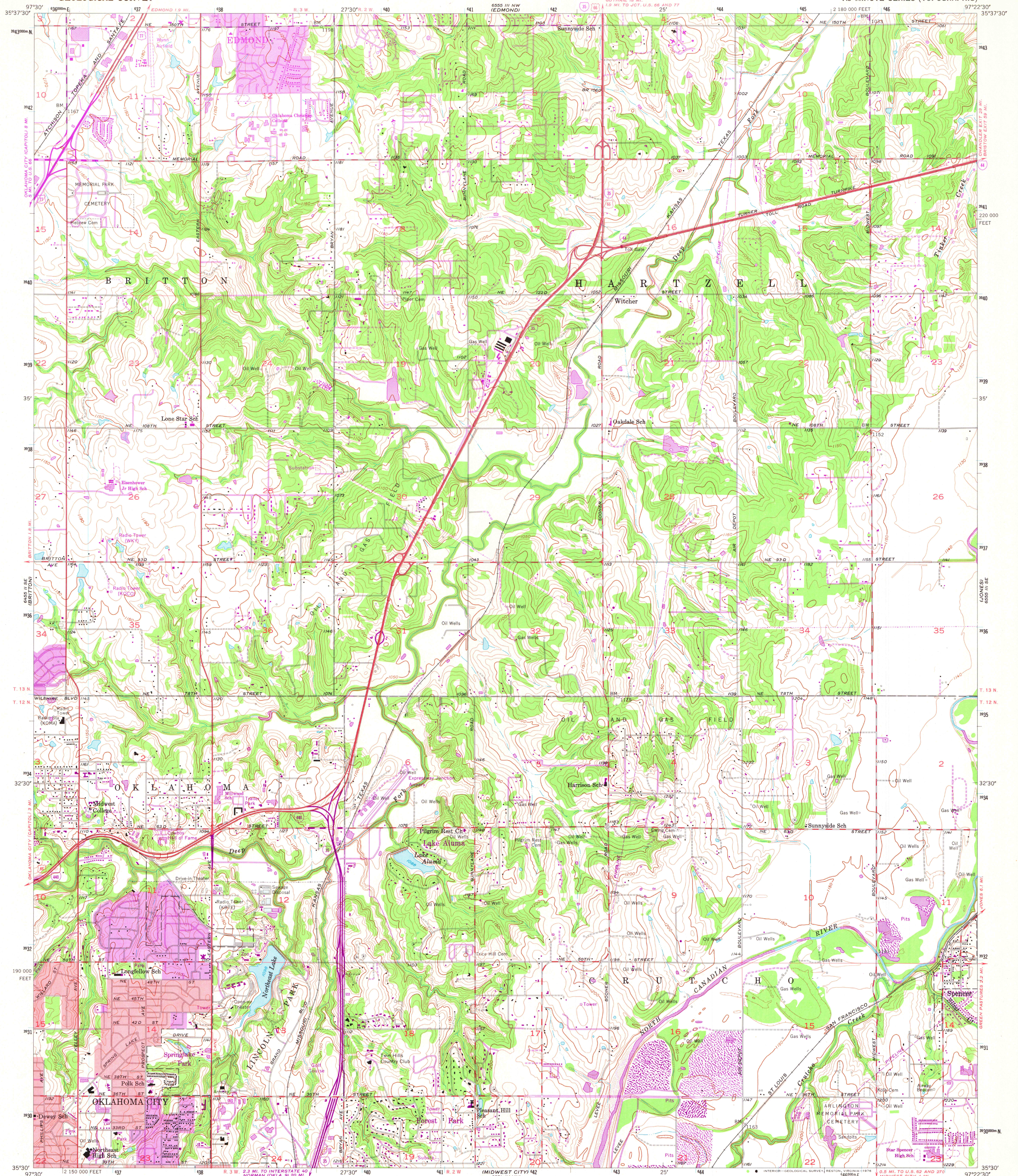


UNITED STATES
DEPARTMENT OF THE INTERIOR
GEOLOGICAL SURVEY

SPENCER QUADRANGLE
OKLAHOMA—OKLAHOMA CO.
7.5 MINUTE SERIES (TOPOGRAPHIC)



Mapped, edited, and published by the Geological Survey

Control by USGS and USC&GS

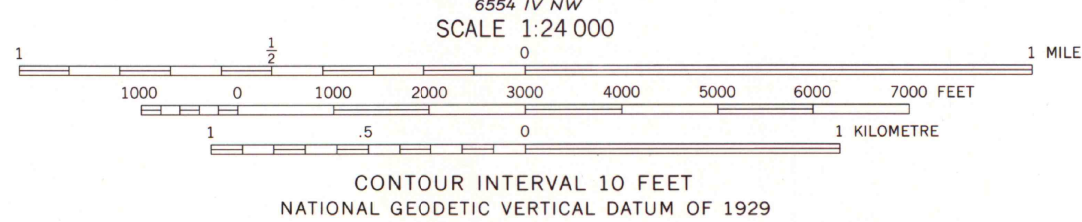
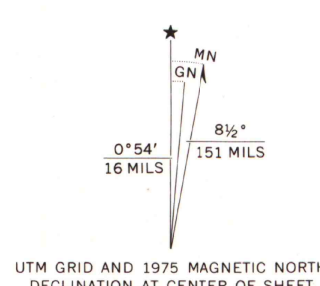
Culture and drainage in part compiled from aerial photographs
taken 1954. Topography by planetable surveys 1933 and 1935.
Revised 1956

Polyconic projection. 1927 North American datum.
10,000-foot grid based on Oklahoma coordinate system, north zone
1000-metre Universal Transverse Mercator grid ticks,
zone 14, shown in blue

Red tint indicates areas in which only landmark buildings are shown

Revisions shown in purple compiled from aerial photographs
taken 1969 and 1975. Woodland areas recomputed 1969
This information not field checked

Purple tint indicates extension of urban areas



ROAD CLASSIFICATION	
Heavy-duty	Light-duty
Medium-duty	Unimproved dirt
U.S. Route	State Route
Interstate Route	



MAP AND AIR PHOTO
LIBRARY

AUG 17 1976

University of Wisconsin
Madison

SPENCER, OKLA.
N3530—W9722.5/7.5

1956
PHOTOREVISED 1969 AND 1975
AMS 6555 III SW—SERIES Y883

THIS MAP COMPLIES WITH NATIONAL MAP ACCURACY STANDARDS
FOR SALE BY U.S. GEOLOGICAL SURVEY, DENVER, COLORADO 80225, OR RESTON, VIRGINIA 22092
AND BY THE OKLAHOMA GEOLOGICAL SURVEY, NORMAN, OKLAHOMA 73069
A FOLDER DESCRIBING TOPOGRAPHIC MAPS AND SYMBOLS IS AVAILABLE ON REQUEST