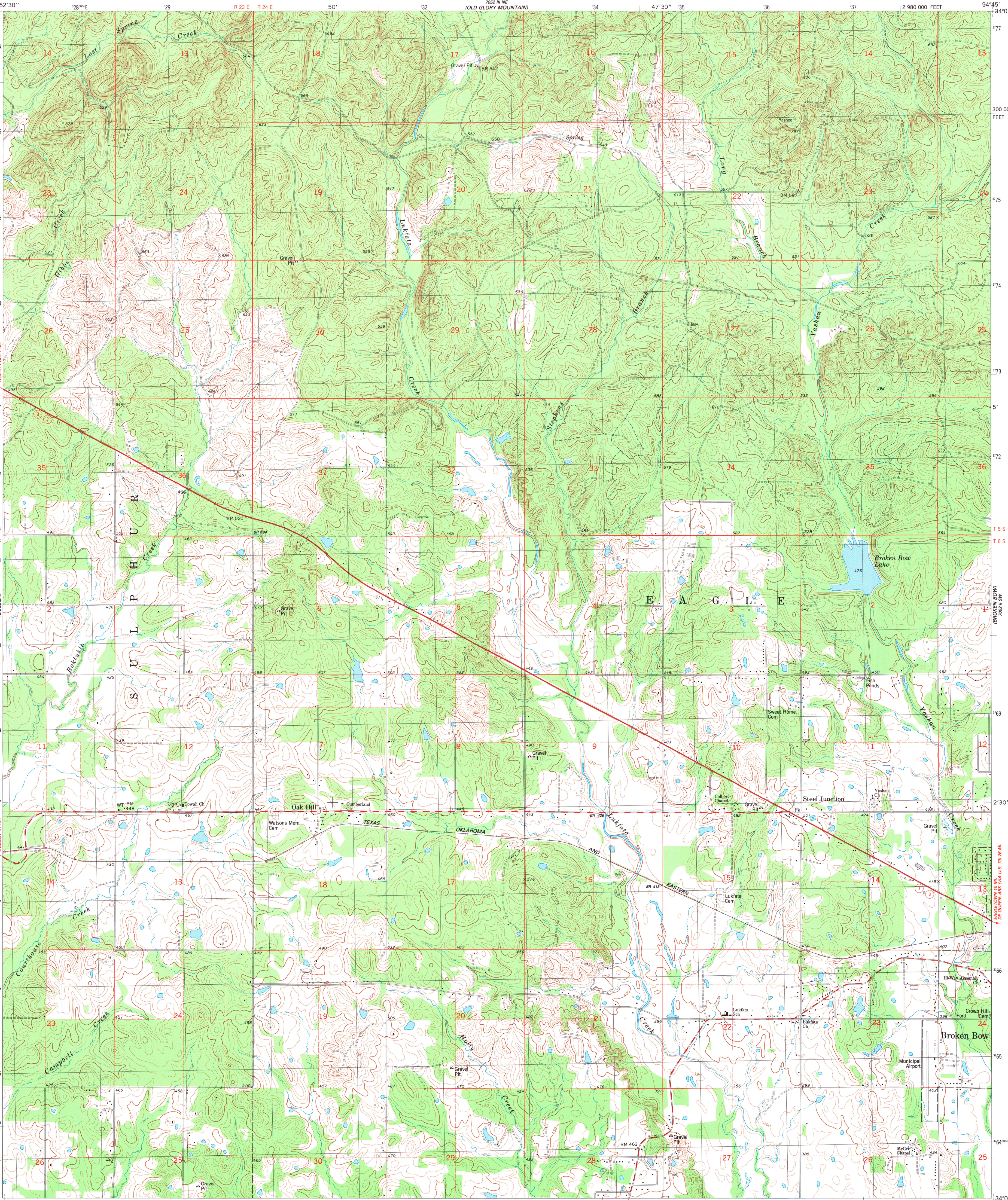


UNITED STATES
DEPARTMENT OF THE INTERIOR
GEOLOGICAL SURVEY

STATE OF OKLAHOMA

STEEL JUNCTION QUADRANGLE
OKLAHOMA-MC CURTAIN CO.
7.5 MINUTE SERIES (TOPOGRAPHIC)
SE/4 GOLDEN 15' QUADRANGLE
1:24 000 FEET



Mapped, edited, and published by the Geological Survey in cooperation with the Oklahoma Highway Department, Oklahoma Water Resources Board, and Oklahoma State Soil Conservation Board

Control by USGS and NOS/NOAA

Topography by photogrammetric methods from aerial photographs taken 1979-80. Field checked 1980. Map edited 1982

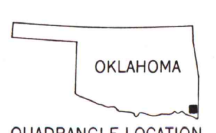
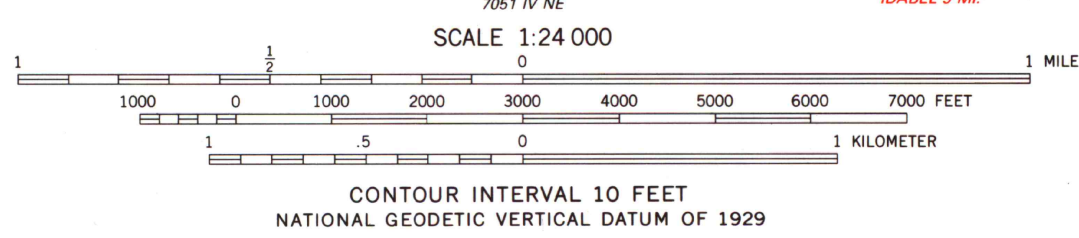
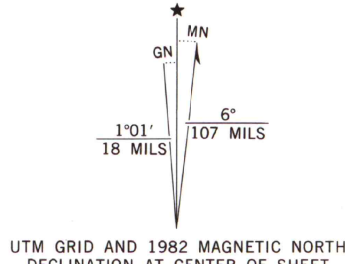
Projection and 10,000-foot grid ticks: Oklahoma coordinate system, south zone (Lambert conformal conic)

1000-meter Universal Transverse Mercator grid, zone 15

1927 North American Datum

To place on the predicted North American Datum 1983 move the projection lines 7 meters south and 20 meters east as shown by dashed corner ticks

Fine red dashed lines indicate selected fence and field lines where generally visible on aerial photographs. This information is unchecked



ROAD CLASSIFICATION	
Primary highway, hard surface	Light-duty road, hard or improved surface
Secondary highway, hard surface	Unimproved road
Interstate Route	U.S. Route
	State Route

MAP LIBRARY
MAY 21 1984
University of Wisconsin
Madison

STEEL JUNCTION, OKLA.
SE/4 GOLDEN 15' QUADRANGLE
N3400-W9445/7.5
1982
DMA 7052 III SE-SERIES V883

THIS MAP COMPLIES WITH NATIONAL MAP ACCURACY STANDARDS
FOR SALE BY U.S. GEOLOGICAL SURVEY, DENVER, COLORADO 80225, OR RESTON, VIRGINIA 22092
AND BY THE OKLAHOMA GEOLOGICAL SURVEY, NORMAN, OKLAHOMA 73069
A FOLDER DESCRIBING TOPOGRAPHIC MAPS AND SYMBOLS IS AVAILABLE ON REQUEST