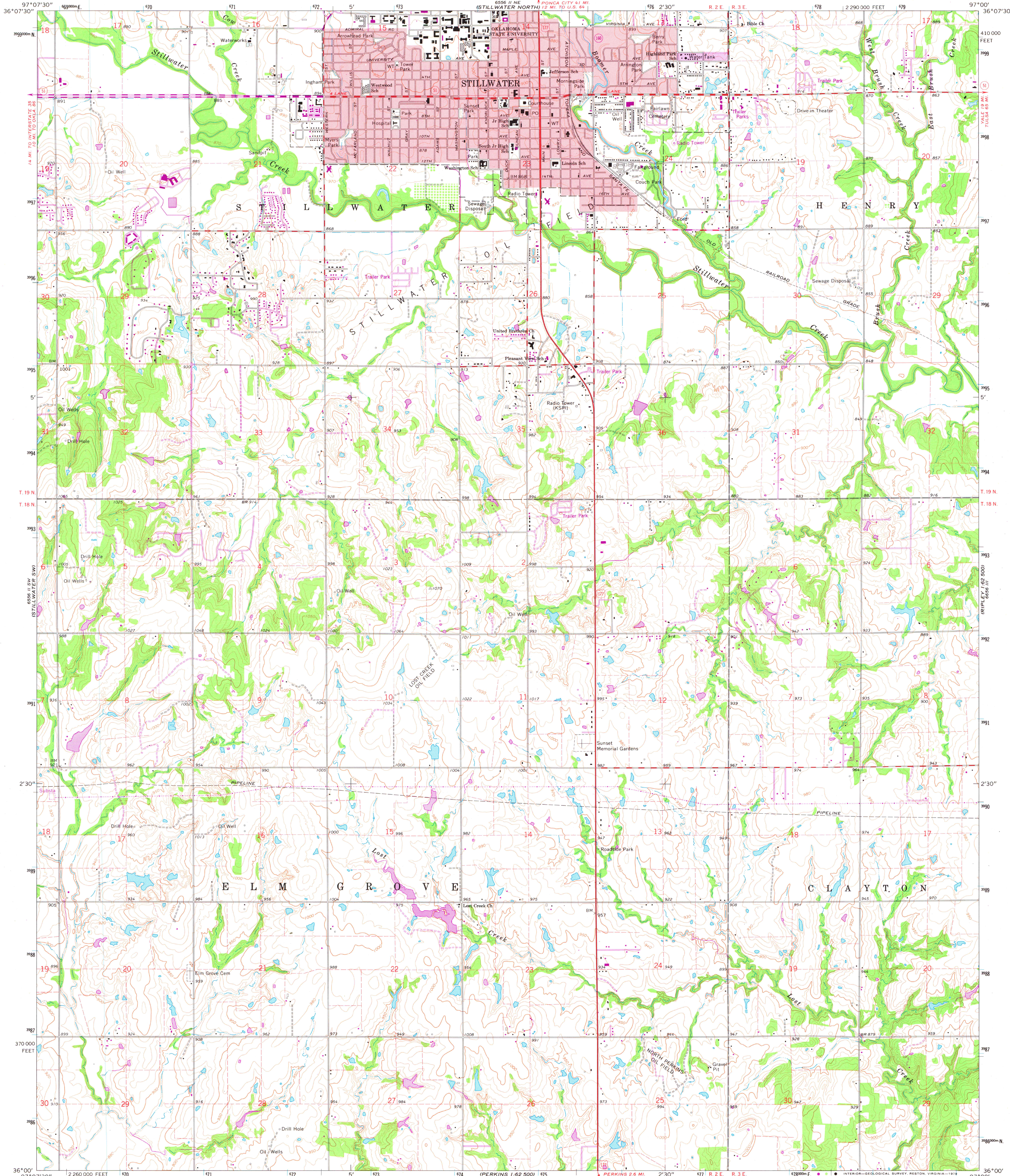


UNITED STATES
DEPARTMENT OF THE INTERIOR
GEOLOGICAL SURVEY

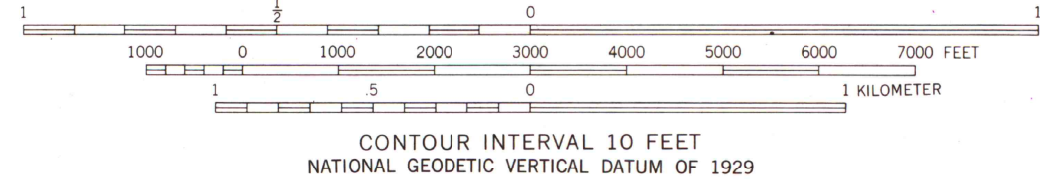
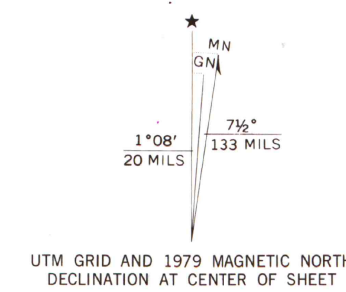


STILLWATER SOUTH QUADRANGLE
OKLAHOMA—PAYNE CO.
7.5 MINUTE SERIES (TOPOGRAPHIC)

6556 II SE—SERIES V88
RIPLEY 1:62,500



Mapped, edited, and published by the Geological Survey
Control by USGS, USC&GS, and Oklahoma Geological Survey
Topography by photogrammetric methods from aerial
photographs taken 1964. Field checked 1967
Polyconic projection. 1927 North American datum
10,000-foot grid based on Oklahoma coordinate system, north zone
1000-meter Universal Transverse Mercator grid ticks,
zone 14, shown in blue
Red tint indicates area in which only landmark buildings are shown
Fine red dashed lines indicate selected fence and field lines where
generally visible on aerial photographs. This information is unchecked
Revisions shown in purple and woodland compiled from
aerial photographs taken 1976 and other source data
This information not field checked. Map edited 1979
Purple tint indicates extension of urban areas



ROAD CLASSIFICATION
Primary highway, all weather, hard surface
Secondary highway, all weather, hard surface
Light-duty road, all weather, improved surface
Unimproved road, fair or dry weather
Interstate Route
U. S. Route
State Route
MAP AND AIR PHOTO LIBRARY
STILLWATER SOUTH, OKLA.
N3600—W9700/7.5
1967
University of Wisconsin
Madison
PHOTOREVISED 1979
AMS 6556 II SE—SERIES V88