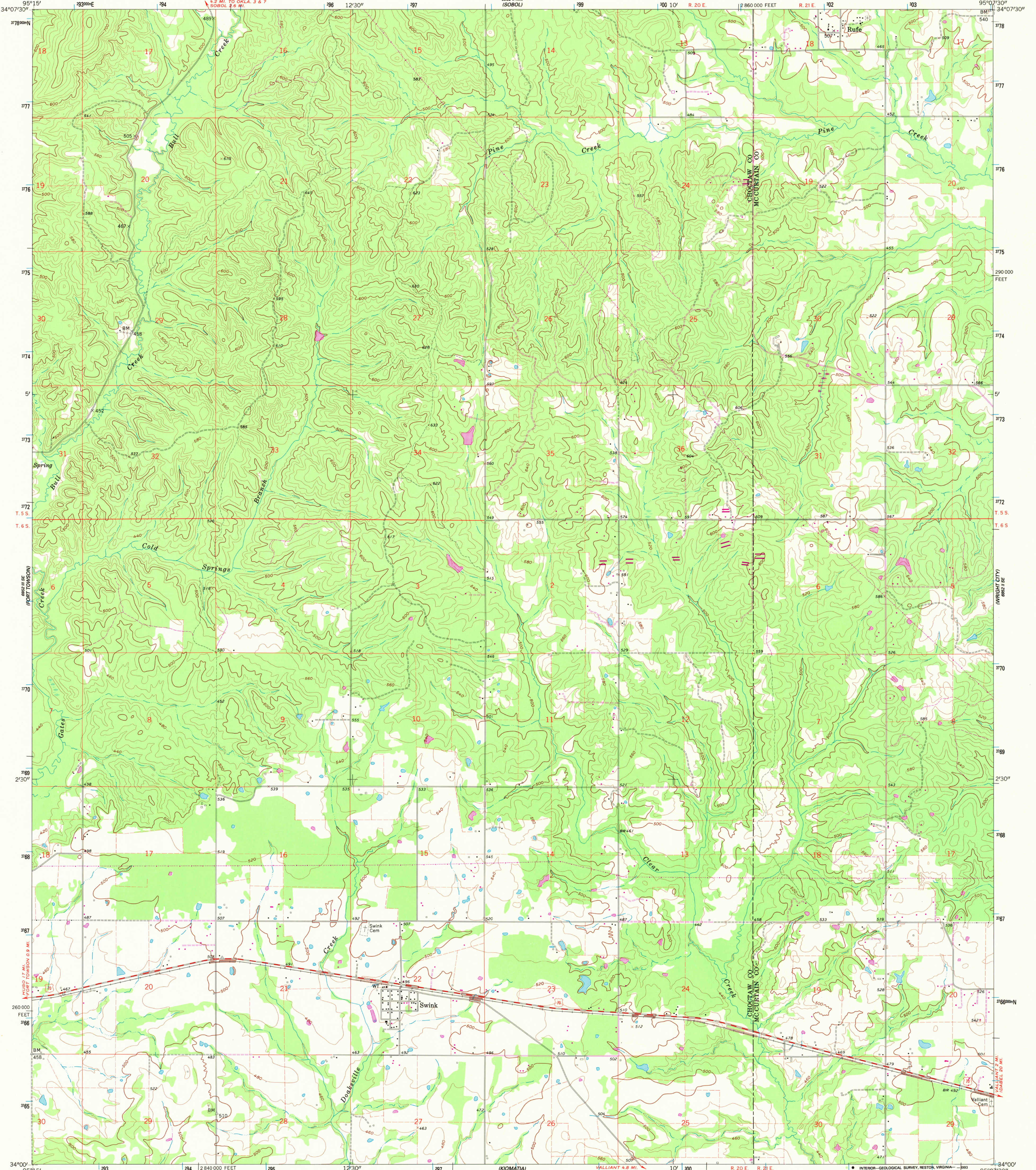


UNITED STATES
DEPARTMENT OF THE INTERIOR
GEOLOGICAL SURVEY

SWINK QUADRANGLE
OKLAHOMA
7.5 MINUTE SERIES (TOPOGRAPHIC)



Produced by the United States Geological Survey

Control by USGS and NOS/NOAA

Topography by photogrammetric methods from aerial photographs

taken 1960. Field checked 1962

Projection and 10,000-foot grid ticks: Oklahoma coordinate

system, south zone (Lambert conformal conic)

1000-meter Universal Transverse Mercator grid ticks, zone 15, shown in blue

1927 North American Datum (NAD 27)

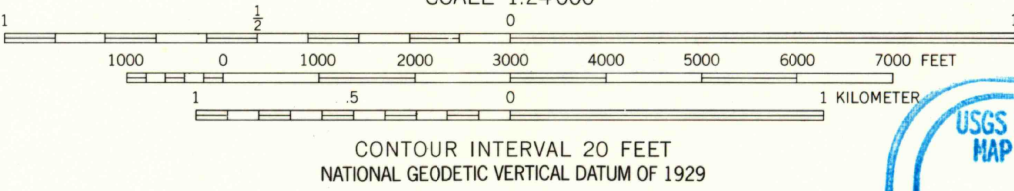
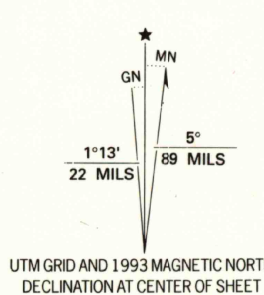
North American Datum of 1983 (NAD 83) is shown by dashed corner ticks

The values of the shift between NAD 27 and NAD 83 for 7.5-minute

intersections are given in USGS Bulletin 1875

Fine red dashed lines indicate selected fence and field lines where

generally visible on aerial photographs. This information is unchecked



CONTOUR INTERVAL 20 FEET
NATIONAL GEODETIC VERTICAL DATUM OF 1929

THIS MAP COMPLIES WITH NATIONAL MAP ACCURACY STANDARDS

FOR SALE BY U.S. GEOLOGICAL SURVEY, DENVER, COLORADO 80225, OR RESTON, VIRGINIA 20192

AND OKLAHOMA GEOLOGICAL SURVEY, NORMAN, OKLAHOMA 73069

A FOLDER DESCRIBING TOPOGRAPHIC MAPS AND SYMBOLS IS AVAILABLE ON REQUEST



ROAD CLASSIFICATION	
Primary highway, hard surface	Light-duty road, hard or improved surface
Secondary highway, hard surface	Unimproved road
Interstate Route	U. S. Route
	State Route

SWINK, OKLA.

34095-A2-1F-024

1962

REVISED 1993

DMA 6952 II SW-SERIES V883