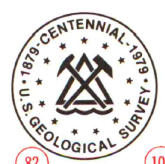
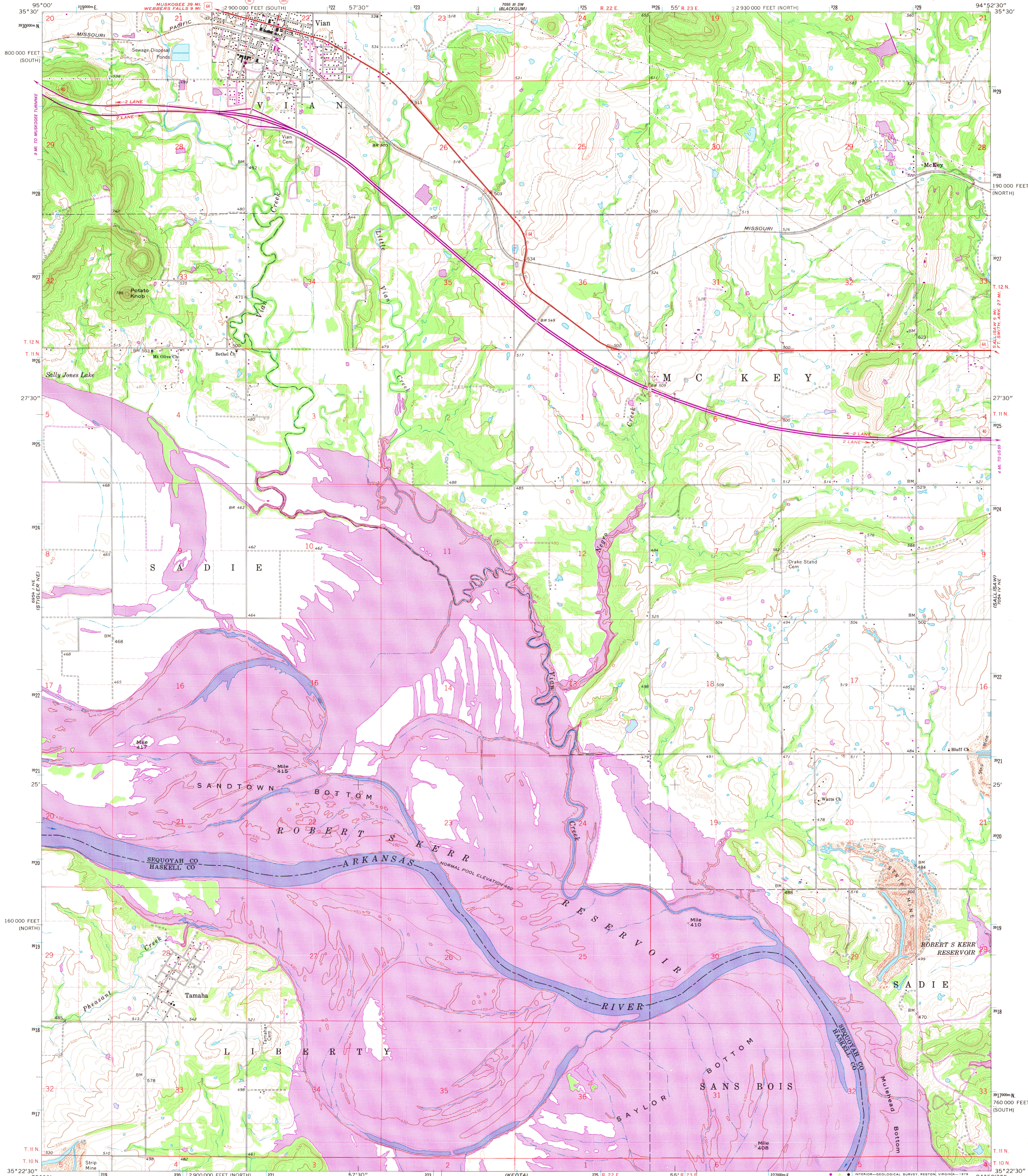


UNITED STATES  
DEPARTMENT OF THE INTERIOR  
GEOLOGICAL SURVEY



VIAN QUADRANGLE  
OKLAHOMA  
7.5 MINUTE SERIES (TOPOGRAPHIC)

7.5 MINUTE SERIES (TOPOGRAPHIC)



Mapped, edited, and published by the Geological Survey

Control by USGS, USC&GS, and USCE

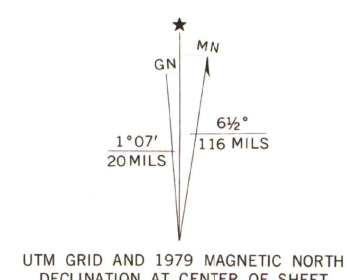
Topography by photogrammetric methods from aerial photographs taken 1963 and planimetric surveys 1967

Polyconic projection, 1927 North American datum  
10,000-foot grids based on Oklahoma coordinate system,  
north and south zones

1000-metre Universal Transverse Mercator grid ticks,  
zone 15, shown in blue

Fine red dashed lines indicate selected fence and field lines where  
generally visible on aerial photographs. This information is uncheck

Revisions shown in purple and woodland compiled from  
aerial photographs taken 1973 and other source data  
This information not field checked. Map edited 1979



SCALE 1:24,000

CONTOUR INTERVAL 10 FEET  
NATIONAL GEODETIC VERTICAL DATUM OF 1929

THIS MAP COMPLIES WITH NATIONAL MAP ACCURACY STANDARDS  
FOR SALE BY U. S. GEOLOGICAL SURVEY, DENVER, COLORADO 80225, OR RESTON, VIRGINIA 22092  
AND BY OKLAHOMA GEOLOGICAL SURVEY, NORMAN, OKLAHOMA 73069  
A FOLDER DESCRIBING TOPOGRAPHIC MAPS IS AVAILABLE ON REQUEST

ROAD CLASSIFICATION

Heavy-duty ——— Light-duty ———  
Medium-duty ——— Unimproved dirt ———

Interstate Route ——— U. S. Route ——— State Route ———

MAP AND AIR PHOTO  
LIBRARY

APR 25 1980

University of Wisconsin  
Madison

VIAN, OKLA.  
N3522.5—W9452.5/7.5

1967  
PHOTOREVISED 1979  
AMS 7054 IV NW—SERIES V883



QUADRANGLE LOCATION