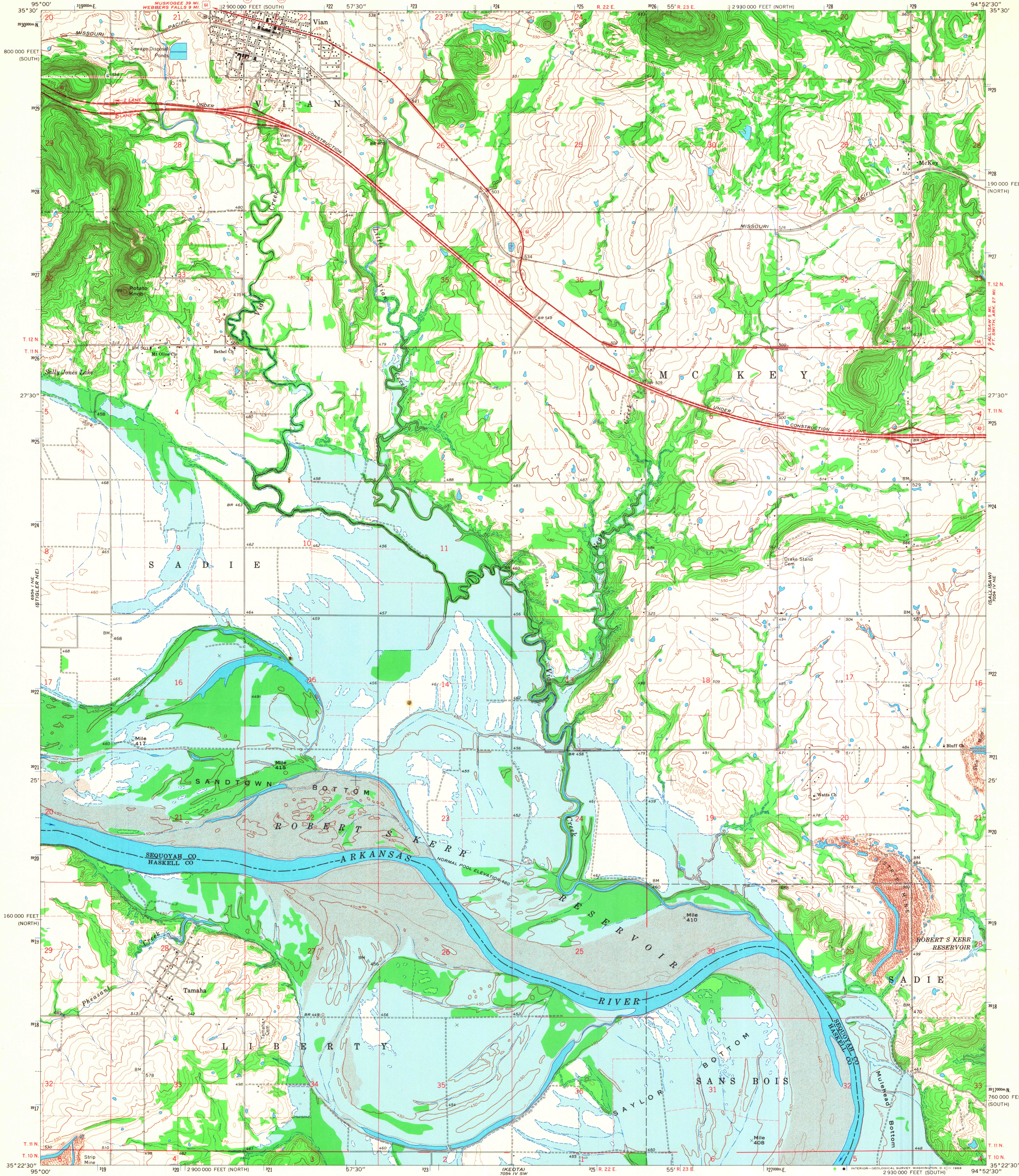
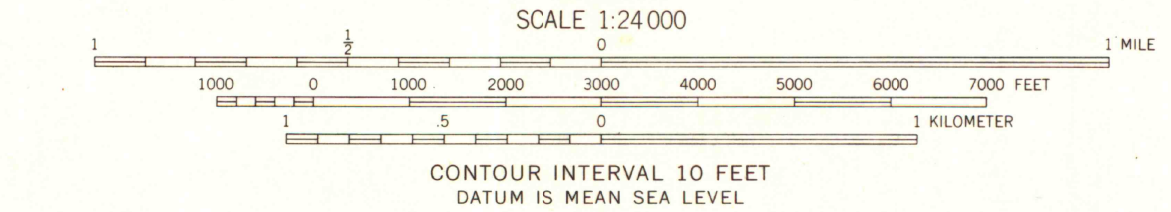
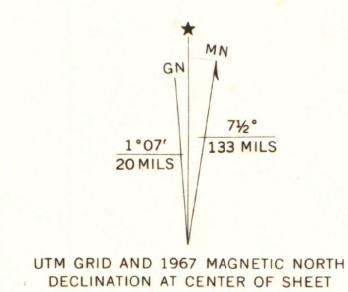


UNITED STATES  
DEPARTMENT OF THE INTERIOR  
GEOLOGICAL SURVEY

VIAN QUADRANGLE  
OKLAHOMA  
7.5 MINUTE SERIES (TOPOGRAPHIC)



Mapped, edited, and published by the Geological Survey  
Control by USGS, USC&GS, and USCE  
Topography by photogrammetric methods from aerial  
photographs taken 1963 and planetable surveys 1967  
Polyconic projection. 1927 North American datum  
10,000-foot grids based on Oklahoma coordinate system,  
north and south zones  
1000-meter Universal Transverse Mercator grid ticks,  
zone 15, shown in blue  
Blue hatching indicates areas to be submerged by Robert S. Kerr Reservoir  
Fine red dashed lines indicate selected fence and field lines where  
generally visible on aerial photographs. This information is unchecked



MAP AND AIR PHOTO LIBRARY  
University of Wisconsin

ROAD CLASSIFICATION  
Heavy-duty ——— Light-duty ———  
Medium-duty ——— Unimproved dirt ———  
Interstate Route U.S. Route State Route



THIS MAP COMPLIES WITH NATIONAL MAP ACCURACY STANDARDS  
FOR SALE BY U.S. GEOLOGICAL SURVEY, DENVER, COLORADO 80225, OR WASHINGTON, D.C. 20242  
A FOLDER DESCRIBING TOPOGRAPHIC MAPS AND SYMBOLS IS AVAILABLE ON REQUEST

VIAN, OKLA.  
N3522.5-W9452.5/7.5

1967

AMS 7054 IV NW-SERIES V883