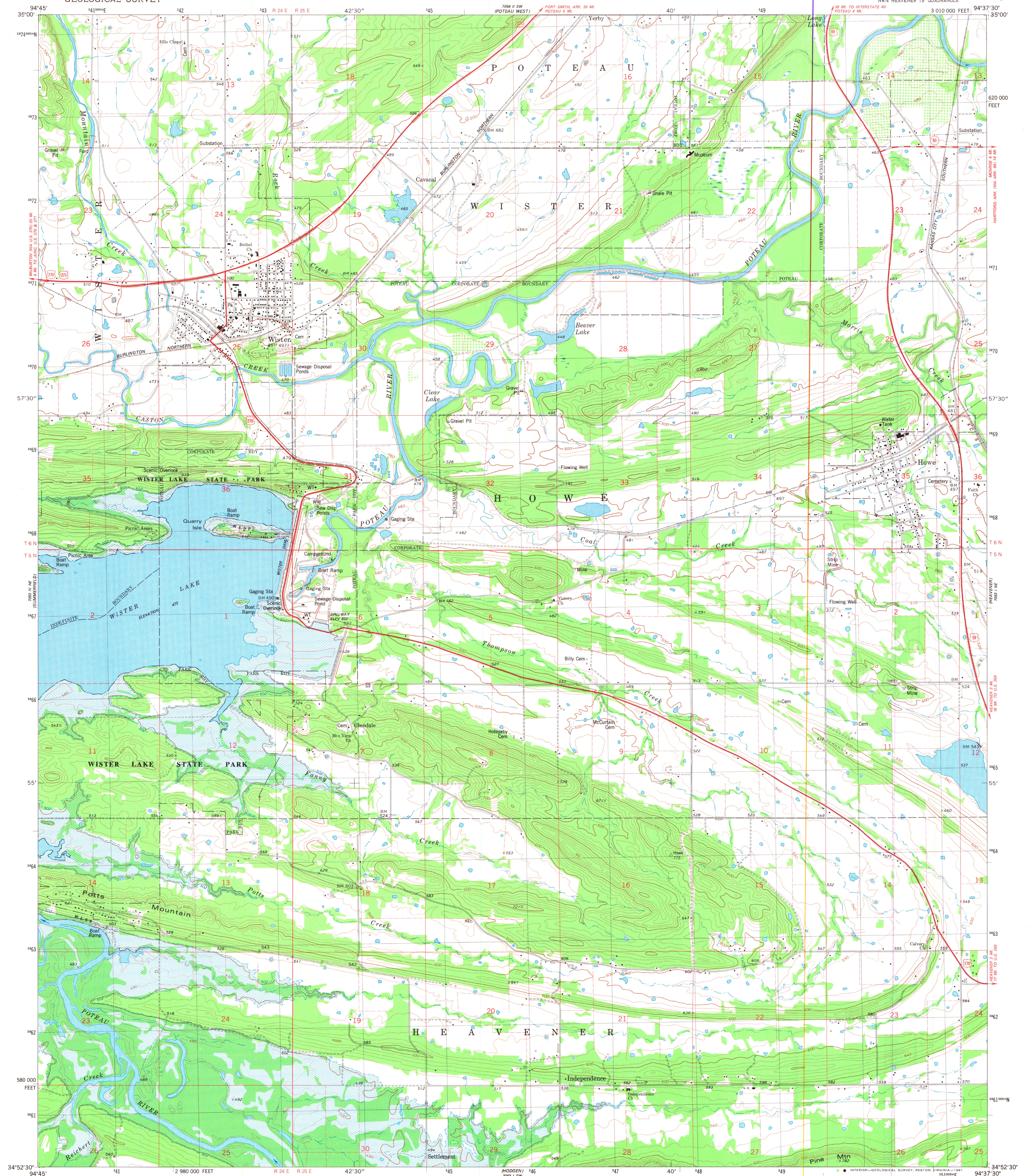


UNITED STATES
DEPARTMENT OF THE INTERIOR
GEOLOGICAL SURVEY

STATE OF OKLAHOMA

WISTER QUADRANGLE
OKLAHOMA-LE FLORE CO.
7.5 MINUTE SERIES (TOPOGRAPHIC)



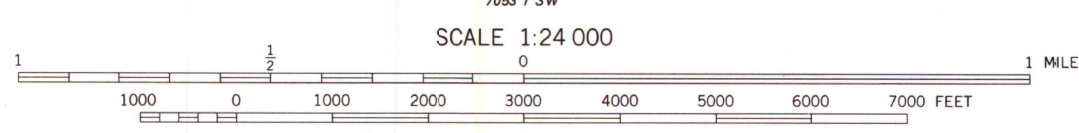
Mapped, edited, and published by the Geological Survey in cooperation with the Oklahoma Highway Department, Oklahoma Water Resources Board, and Oklahoma State Soil Conservation Board

Control by USGS, NOS/NOAA, and Oklahoma Highway Department
Topography by photogrammetric methods from aerial photographs taken 1976. Field checked 1977. Map edited 1981

Projection and 10,000-foot grid ticks: Oklahoma coordinate system, south zone (Lambert conformal conic)
1000-meter Universal Transverse Mercator grid, zone 15
1927 North American Datum

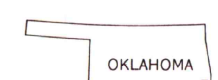
To place on the predicted North American Datum 1983 move the projection lines 6 meters south and 20 meters east as shown by dashed corner ticks

There may be private inholdings within the boundaries of the National or State reservations shown on this map



CONTOUR INTERVAL 20 FEET
DOTTED LINES REPRESENT 10-FOOT CONTOURS
NATIONAL GEODETIC VERTICAL DATUM OF 1929

THIS MAP COMPLIES WITH NATIONAL MAP ACCURACY STANDARDS
FOR SALE BY U. S. GEOLOGICAL SURVEY, DENVER, COLORADO 80225, OR RESTON, VIRGINIA 22092
AND BY THE OKLAHOMA GEOLOGICAL SURVEY, NORMAN, OKLAHOMA 73069
A FOLDER DESCRIBING TOPOGRAPHIC MAPS AND SYMBOLS IS AVAILABLE ON REQUEST



Areas covered by dashed light-blue pattern are subject to controlled inundation

ROAD CLASSIFICATION
Primary highway, hard surface
Secondary highway, hard surface
Unimproved road
Light-duty road, hard or improved surface
Unimproved road
Interstate Route
U. S. Route
State Route

MAP AND AIR PHOTO
LIBRARY

SEP 30 1981

University of Wisconsin
Madison

WISTER, OKLA.
NW/4 HEAVENER 19 QUADRANGLE
N3452.5-W9437.5/7.5

1981

DMA 7053 1 NW-SERIES W983