

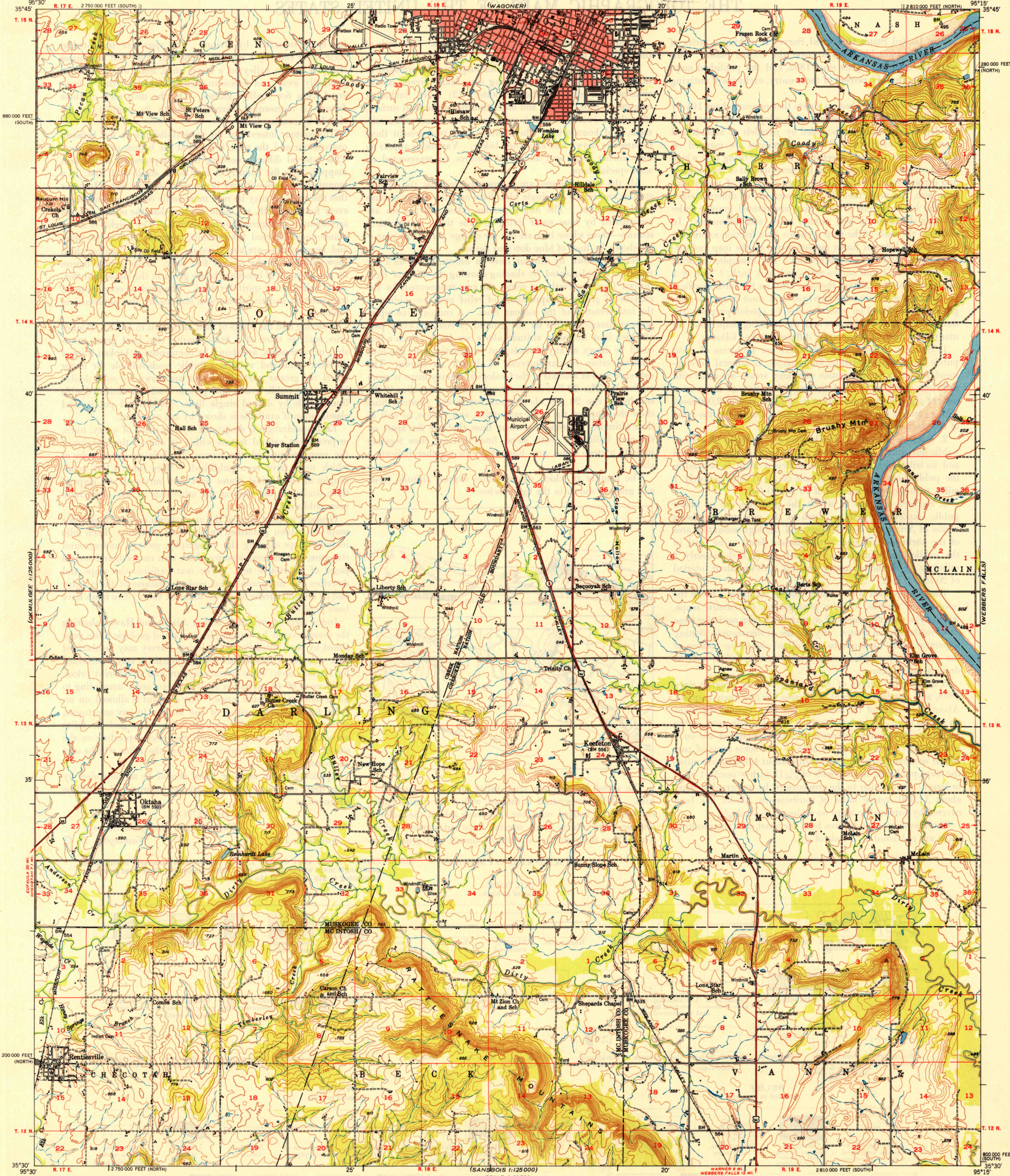
UNITED STATES  
DEPARTMENT OF THE INTERIOR  
GEOLOGICAL SURVEY

UNITED STATES  
DEPARTMENT OF THE ARMY  
CORPS OF ENGINEERS

U.S.G.S.  
FILE COPY  
Instruction and Rating

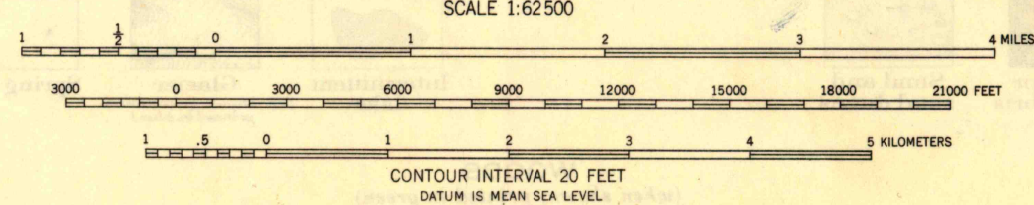
KEEFETON QUADRANGLE  
OKLAHOMA  
15 MINUTE SERIES (TOPOGRAPHIC)

(HULBERT)



Mapped by the Army Map Service  
Edited and published by the Geological Survey  
Control by USC&GS and AMS  
Topography from aerial photographs by multiplex methods  
Aerial photographs taken 1946. Field check 1948  
Polyconic projection. 1927 North American datum  
10,000-foot grids based on Oklahoma coordinate system,  
north and south zones  
No distinction is made between dwellings, barns,  
commercial, and industrial buildings  
Red tint indicates area in which only  
landmark buildings are shown

TRUE NORTH  
MAGNETIC NORTH  
APPROXIMATE MEAN  
DECLINATION, 1948



USGS  
Historical File  
Topographic Division

ROAD CLASSIFICATION  
HARD-SURFACE ALL WEATHER ROADS DRY WEATHER ROADS  
Heavy-duty ———— LANE LANE Improved dirt ————  
Medium-duty ———— LANE LANE Unimproved dirt ————  
Loose-surface, graded, or narrow hard-surface ————  
○ U.S. Route ○ State Route

U.S.G.S.  
FILE COPY  
Instruction and Rating

KEEFETON, OKLA.  
N3530-W9515/15  
EDITION OF 1950

APR 10 1950 2060