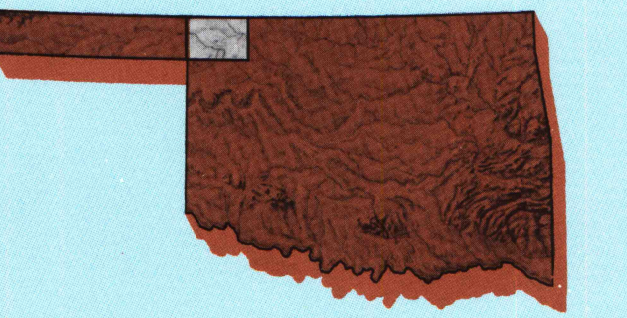


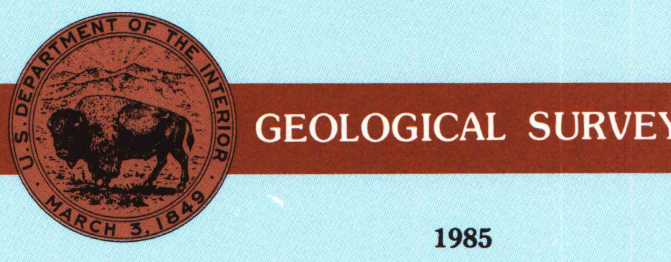
Buffalo
OKLAHOMA-KANSAS

1:100 000-scale
planimetric map



30 X 60 MINUTE QUADRANGLE
SHOWING

- Elevations in meters
- Highways, roads and other manmade structures
- Water features
- Woodland areas
- Geographic names



Produced by the United States Geological Survey
Compiled from USGS 1:24 000-scale topographic maps dated 1970-1971. Planimetry revised from aerial photographs taken 1984 and other source data. Revised information not field checked. Map edited 1985.
Projection and 10 000-meter grid, zone 14, Universal Transverse Mercator
25 000-foot grid ticks based on Oklahoma coordinate system, north zone
1927 North American Datum
To place on the predicted North American Datum 1983, move the projection lines 34 meters east
There may be private inholdings within the boundaries of the National or State reservations shown on this map

NATIONAL GEODETIC VERTICAL DATUM OF 1929
ELEVATIONS SHOWN TO THE NEAREST METER

THIS MAP COMPLIES WITH NATIONAL MAP ACCURACY STANDARDS

CONVERSION TABLE		DECLINATION DIAGRAM		ADJOINING MAPS		
Meters	Feet	MAGNETIC DECLINATION		1	2	3
1	3.2808	1985		4	5	6
2	6.5617	1986		7	8	9
3	9.8425	1987		10	11	12
4	13.1234	1988		13	14	15
5	16.4042	1989		16	17	18
6	19.6850	1990		19	20	21
7	22.9659	1991		22	23	24
8	26.2467	1992		25	26	27
9	29.5275	1993		28	29	30
10	32.8084	1994		31	32	33

To convert meters to feet multiply by 3.2808
To convert feet to meters multiply by 0.3048

UTM grid convergency (GN) and 1985 magnetic declination (MD) are shown on map
Diagram is approximate

1 Liberal
2 Protection
3 Medicine Lodge
4 Allen
5 Pawnee
6 Woodward
7 Fairview

FOR SALE BY U. S. GEOLOGICAL SURVEY
DENVER, COLORADO 80225, OR RESTON, VIRGINIA 22092

Topographic Map Symbols

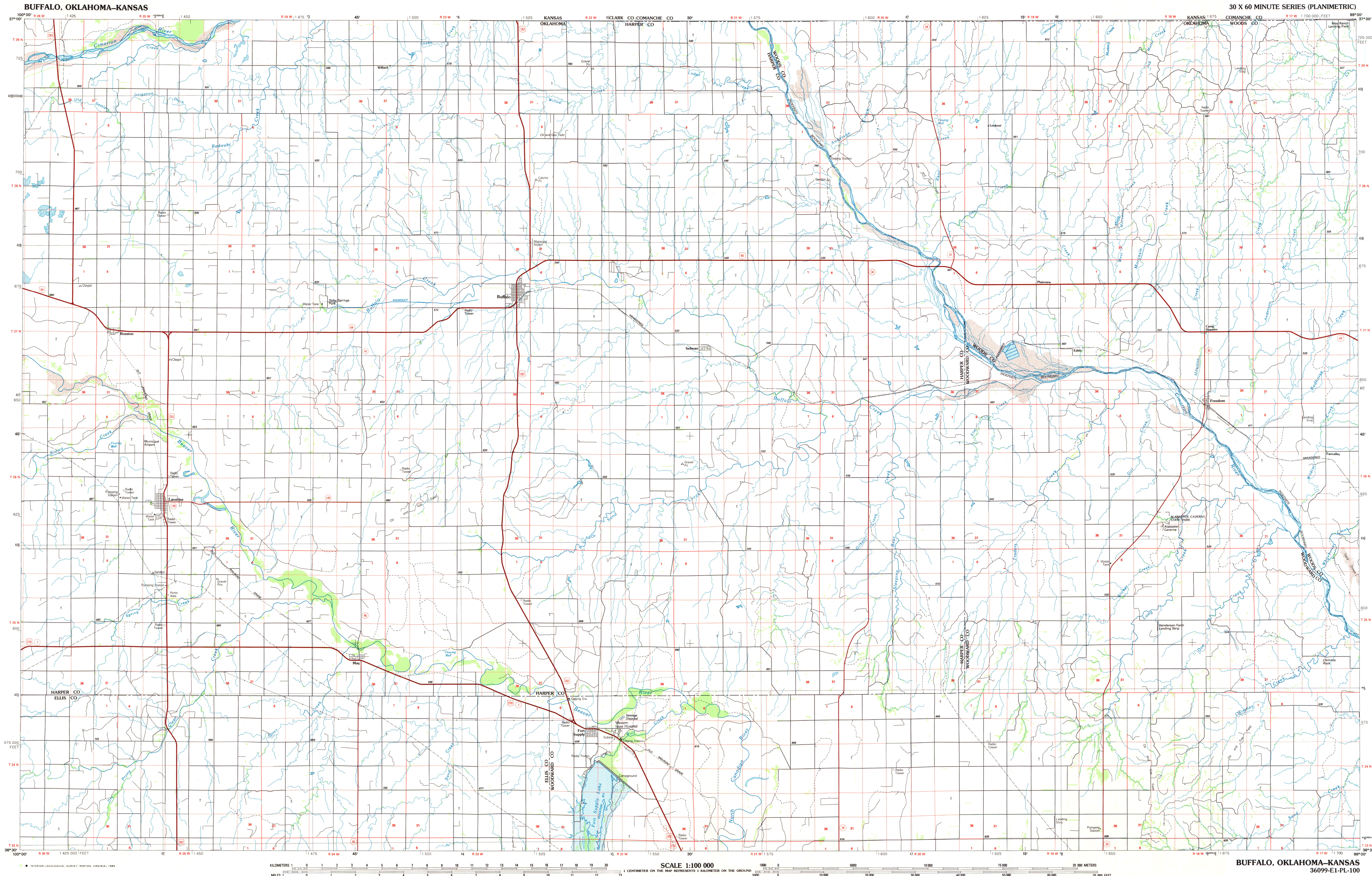
Primary highway, hard surface	Secondary highway, hard surface	Light duty road, principal street, hard or improved surface	Other road or street, road	Route marker: Interstate, U.S. State	Railroad: standard gage; narrow gage	Bridge: overpass, underpass	Tunnel: road; railroad	Built up area; locality; elevation	Airport: landing field; landing strip	National boundary	State boundary	County boundary	National or State reservation boundary	Land grant boundary	U.S. public lands survey: range, township; section	Range, township; section line; unpatented	Power transmission line; pipeline	Dam; dam with lock	Cemetery; building	Woods: water well; spring	Mine shaft; adit or cave; mine, quarry; gravel pit	Campground; picnic area; U.S. location monument	Ruins; cliff dwelling	Disturbed surface: strip mine, bar, sand	Contours: index; intermediate; supplementary	Bathymetric contours: index; intermediate	Stream, lake: perennial; intermittent	Playa; large and small; lake, large and small	Area to be submerged; marsh; swamp	Land subject to controlled inundation; woodland	Shrub; mangrove	Orchard; vineyard
-------------------------------	---------------------------------	---	----------------------------	--------------------------------------	--------------------------------------	-----------------------------	------------------------	------------------------------------	---------------------------------------	-------------------	----------------	-----------------	--	---------------------	--	---	-----------------------------------	--------------------	--------------------	---------------------------	--	---	-----------------------	--	--	---	---------------------------------------	---	------------------------------------	---	-----------------	-------------------

A pamphlet describing topographic maps is available on request

30 X 60 MINUTE SERIES (PLANIMETRIC)

BUFFALO, OKLAHOMA-KANSAS
36099-E1-PL-100

SET
JUN 4 - 1985
ARTHUR H. ROBINSON MAP LIBRARY
University of Wisconsin-Madison



SCALE 1:100 000
KILOMETERS 0 1 2 3 4 5 6 7 8 9 10 11 12 13 14 15 16 17 18 19 20
MILES 0 1 2 3 4 5 6 7 8 9 10 11 12 13 14 15 16 17 18 19 20
CENTIMETER ON THE MAP REPRESENTS 1 KILOMETER ON THE GROUND
1:100 000
5000 10000 15000 20000 25000 30000 35000 40000 45000 50000 55000 60000 65000 70000 METERS
5000 10000 15000 20000 25000 30000 35000 40000 45000 50000 55000 60000 65000 70000 FEET