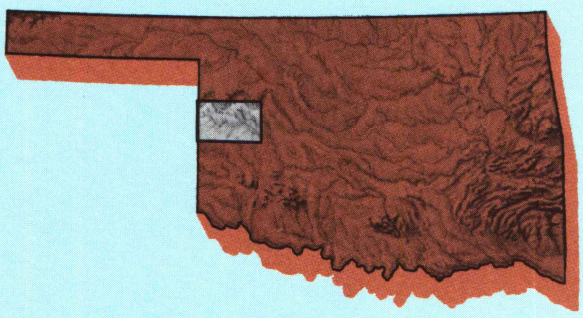


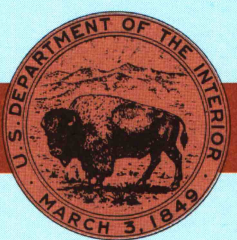
Foss Reservoir
OKLAHOMA

1:100 000-scale metric
planimetric map



30 X 60 MINUTE QUADRANGLE
SHOWING

- Elevations in meters
- Highways, roads and other manmade structures
- Water features
- Woodland areas
- Geographic names



GEOLOGICAL SURVEY

1984

Produced by the United States Geological Survey
Compiled from USGS 1:24 000 and 1:62 500-scale topographic maps
dated 1957-1966. Planimetry revised from aerial photographs
taken 1979 and other source data. Revised information not
field-checked. Map edited 1984.
Projection and 10 000-meter grid, zone 14,
Universal Transverse Mercator
25 000-foot grid ticks based on Oklahoma coordinate
system, north and south zones
1927 North American Datum
To place on the predicted North American Datum 1983, move
the projection lines 2 meters south and 34 meters east.
There may be private inholdings within the boundaries of
the National or State reservations shown on this map.

NATIONAL GEODETIC VERTICAL DATUM OF 1929
ELEVATIONS SHOWN TO THE NEAREST METER

THIS MAP COMPLIES WITH NATIONAL MAP ACCURACY STANDARDS

CONVERSION TABLE		DECLINATION DIAGRAM		ADJOINING MAPS	
Meters	Feet	Magnetic Declination		1	2
1	3.2808	1984		3	4
2	6.5617	1979		5	6
3	9.8425	1974		7	8
4	13.1234	1969			
5	16.4042	1964			
6	19.6850	1959			
7	22.9659	1954			
8	26.2467	1949			
9	29.5276	1944			
10	32.8084	1939			

To convert meters to feet
multiply by 3.2808
To convert feet to meters
multiply by 0.3048

UTM grid convergence
with and true geographic
declination (MAG)
in center of map
Diagram is approximate

1 Pteron
2 Woodward
3 Pampa
4 Pampa
5 Wagoner
6 Shawnee
7 Elk City
8 Anadarko

FOR SALE BY U. S. GEOLOGICAL SURVEY, DENVER, COLORADO 80225
OR RESTON, VIRGINIA 22092

U.S. ROBINSON
MAP LIBRARY

DEC 3 1984

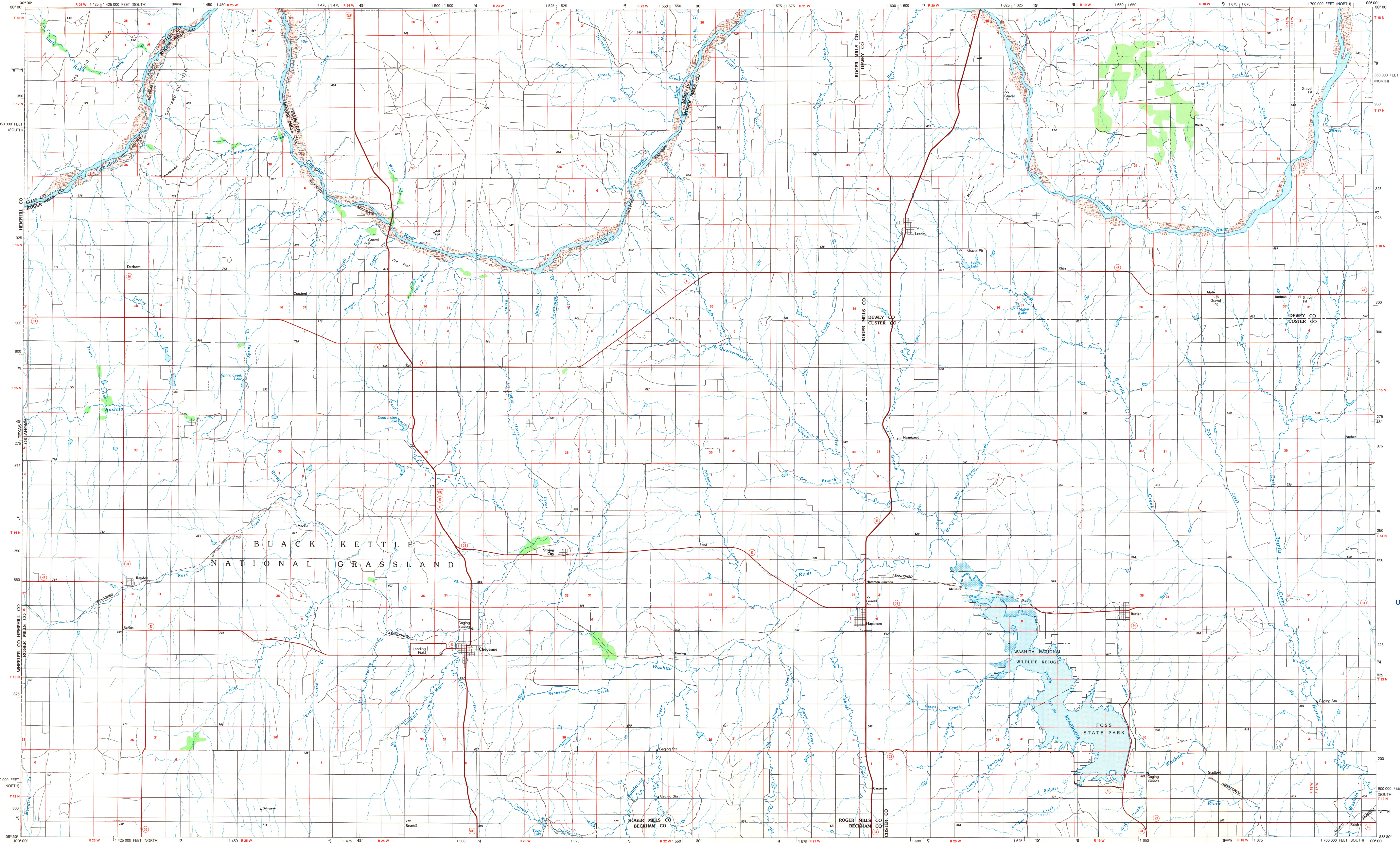
University of Wisconsin
Madison

U.S. Regional
Duplicatory Copy
DO NOT DISCARD

Planimetric Map Symbols

- Primary highway, hard surface
- Secondary highway, hard surface
- Light duty road, principal street, hard or improved surface
- Other road or street, trail
- Route marker, Interstate, U.S., State
- Railroad: standard gage, narrow gage
- Bridge: overpass, underpass
- Tunnel: road, railroad
- Built up area: locality, elevation
- Airport, landing field, landing strip
- National boundary
- State boundary
- County boundary
- National or State reservation boundary
- Land grant boundary
- U.S. public lands survey: range, township, section
- Range, township, section line, projected
- Power transmission line: pipeline
- Dam: dam with lock
- Cemetery, building
- Wetland: water, wet, spring
- Mine shaft, adit or cave; mine, quarry, gravel pit
- Campground, picnic area; U.S. location monument
- Ruin, cliff dwelling
- Stream, lake, perennial, intermittent
- Reefs, large and small; tide, large and small
- Area to be submerged; marsh, swamp
- Land subject to controlled inundation; woodland
- Scrub, mangrove
- Other: vineyard

FOSS RESERVOIR, OKLAHOMA



FOSS RESERVOIR, OKLAHOMA
35099-E1-PL-100

1984

B006-9/3 SET