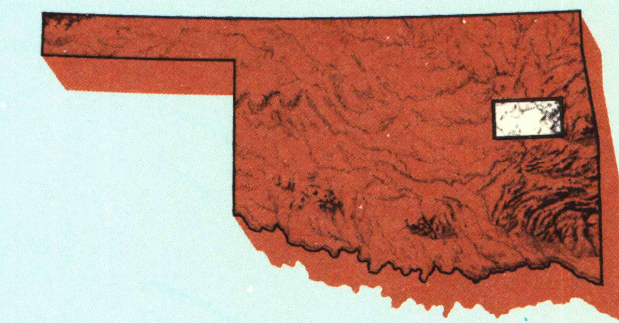
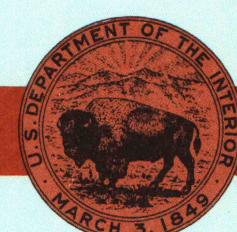


1:100 000-scale metric topographic map of **Muskogee** OKLAHOMA



30 X 60 MINUTE QUADRANGLE SHOWING

- Contours and elevations in meters
- Highways, roads and other manmade structures
- Water features
- Woodland areas
- Geographic names



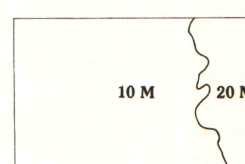
GEOLOGICAL SURVEY

1978

Produced by the United States Geological Survey in cooperation with the Bureau of Land Management. Compiled from USGS 1:24 000 and 1:62 500-scale topographic maps dated 1948-1971. Planimetry revised from aerial photographs taken 1973, 1976 and other source data. Revised information not field checked. Map edited 1978.

Projection and 10 000-meter grid, zone 15: Universal Transverse Mercator. 50 000-foot grid ticks based on Oklahoma coordinate system, north and south zones. 1927 North American Datum. To place on the predicted North American Datum 1983 move the projection lines 5 meters south and 23 meters east. There may be private inholdings within the boundaries of the National or State reservations shown on this map.

CONTOUR INTERVAL: 10 AND 20 METERS
NATIONAL GEODETIC DATUM OF 1929



THIS MAP COMPLIES WITH NATIONAL MAP ACCURACY STANDARDS

CONVERSION TABLE		DECLINATION DIAGRAM		ADJOINING MAPS			
Meters	Ft.	G.M.T.		1	2	3	4
1	3.2808			4	5		
2	6.5617						
3	9.8425						
4	13.1234						
5	16.4042						
6	19.6850						
7	22.9659						
8	26.2467						
9	29.5276						
10	32.8084			6	7	8	

To convert meters to feet multiply by 3.2808
To convert feet to meters multiply by 0.3048

UTM grid convergence (G) and 1978 magnetic declination (M) center of map
Diagram is approximate

1. Koyukuk Lake
2. Lake
3. Lake
4. Browne
5. Browne
6. Browne
7. Lake
8. Fort Smith

FOR SALE BY U. S. GEOLOGICAL SURVEY, DENVER, COLORADO 80225
OR RESTON, VIRGINIA 22092

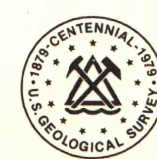
Topographic Map Symbols

Primary highway, hard surface	
Secondary highway, hard surface	
Light duty road, gravel street, hard or improved surface	
Other road or street, trail	
Route marker: Interstate, U. S. State	
Route marker: standard gauge, narrow gauge	
Bridge, overpass, underpass	
Tunnel: road, railroad	
Build up area, locality, elevation	
Airport: landing field, landing strip	
National boundary	
State boundary	
County boundary	
National or State reservation boundary	
Land grant boundary	
U. S. public lands survey: range, township, section	
Range, township, section line: protected	
Power transmission line: pipeline	
Dam, dam with lock	
Cemetery, building	
Windmill, water well, spring	
Mine shaft: adit or cave, mine, quarry, gravel pit	
Campground, picnic area, U. S. location monument	
Ruin, cliff dwelling	
Disturbed surface: strip mine, bog, sand	
Contours: index, intermediate, supplementary	
Bathymetric contours: index, intermediate	
Stream, lake, perennial, intermittent	
Rapids, large and small; tide, large and small	
Area to be submerged; marsh, swamp	
Land subject to controlled inundation; woodland	
Scrub, mangrove	
Drainage, viewpoint	

MUSKOGEE, OKLAHOMA
3595-E1-T100

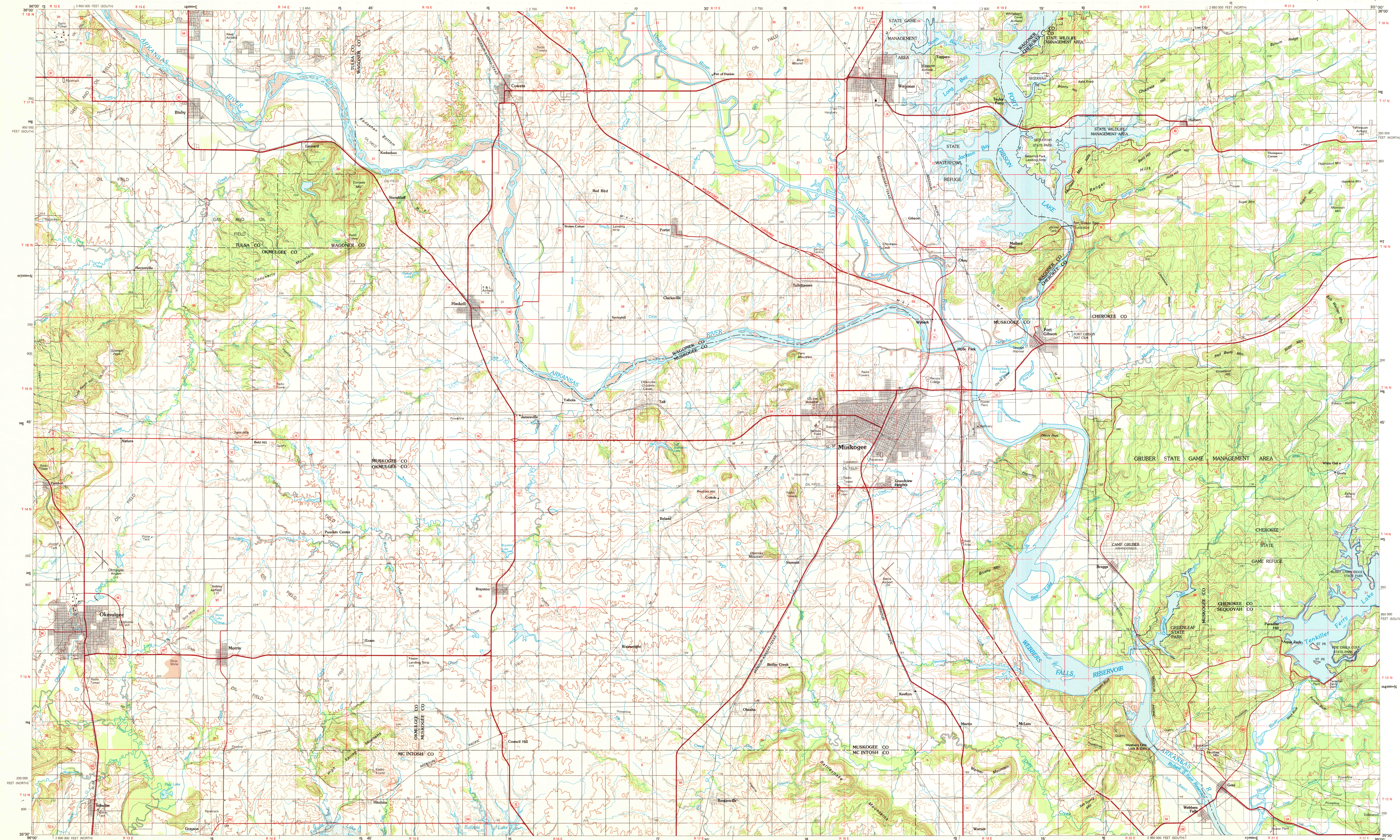
SET

1978 2006-9/18



MUSKOGEE, OKLAHOMA

30X60 MINUTE SERIES (TOPOGRAPHIC)



SCALE 1:100 000
CONTOUR INTERVAL 10 AND 20 METERS

MAP AND AIR PHOTO
LIBRARY
JUN 26 1979
University of Wisconsin
Madison