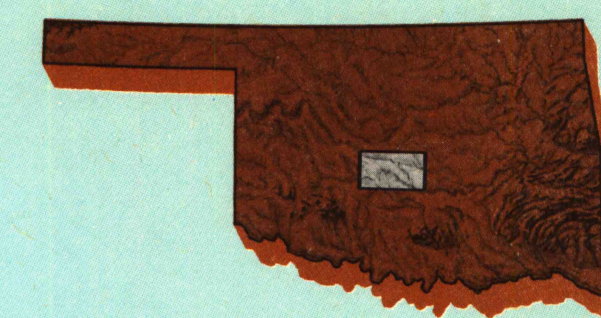


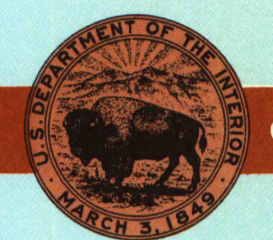
Oklahoma City South OKLAHOMA

1:100 000-scale metric
topographic map



30 X 60 MINUTE QUADRANGLE
SHOWING

- Contours and elevations in meters
- Highways, roads and other manmade structures
- Water features
- Woodland areas
- Geographic names



GEOLOGICAL SURVEY

1985

Produced by the United States Geological Survey
Compiled from USGS 1:24 000-scale topographic maps
dated 1956-1966. Planimetry revised from aerial
photographs taken 1980-81 and other source data.
Revised information not field checked.
Map edited 1985.

Projection and 10 000-meter grid, zone 14
Universal Transverse Mercator
25 000-foot grid ticks based on Oklahoma coordinate
system, north and south zones, 1927 North American Datum
To place on the predicted North American Datum 1983 move
the projection lines 4 meters south and 28 meters east.
There may be private inholdings within the boundaries of the
National or State reservations shown on this map.

CONTOUR INTERVAL, 10 METERS
NATIONAL GEODETIC VERTICAL DATUM OF 1929
ELEVATIONS SHOWN TO THE NEAREST METER

THIS MAP COMPLIES WITH NATIONAL MAP ACCURACY STANDARDS

CONVERSION TABLE

Meters Feet

1	3.2808
2	6.5617
3	9.8425
4	13.1232
5	16.4040
6	19.6848
7	22.9656
8	26.2464
9	29.5272
10	32.8080

To convert meters to feet multiply by 3.2808

To convert feet to meters multiply by 0.3048

DECLINATION DIAGRAM

The diagram illustrates the relationship between three types of north: Magnetic North (MN), True North (GN), and Grid North (GN). MN is indicated by a star at the top. GN is shown as a vertical line. The angle between MN and GN is labeled as 0°52'. A scale bar below the diagram indicates a distance of 15 miles.

UTM grid convergence (CM) and declination (NM) at center of map

Diagram is approximate

ADJOINING MAPS

1 2 3

4 5

6 7 8

- Watonga
- Oklahoma City N
- Bristow
- Lawton
- Shawnee
- Lawton
- Poole Valley
- Ada

FOR SALE BY U. S. GEOLOGICAL SURVEY, DENVER, COLORADO 80225
OR RESTON, VIRGINIA 22092

A.H. ROBINSON
MAP LIBRARY

OCT 13 1990

University of Wisconsin
Madison

U.S. Regional
Depository Copy
DO NOT DISCARD

Topographic Map Symbols

Primary highway, hard surface	
Secondary highway, hard surface	
Light duty road, principal street, hard or improved surface	
Other road or street, trail	
Road marker: intermediate, U. S., State	
Railroad: standard gauge, narrow gauge	
Bridge: overpass, underpass	
Tunnel: road, railroad	
Built up area, locality, elevation	
Airport: landing field, landing strip	
National boundary	
State boundary	
County boundary	
National or State reservation boundary	
Land grant boundary	
U. S. public lands survey: range, township, section	
Range, township, section line: protected	
Power transmission line: pipeline	
Dam, dam with lock	
Cemetery, building	
Windmill, water well, spring	
Mine shaft, east or cave, mine, quarry, gravel pit	
Campground, picnic area, U. S. location monument	
Railroad: self dwelling	
Distorted surface: strip mine, lava, sand	
Contours: index, intermediate, supplementary	
Stream, lake, reservoir, intermittent	
Rapids, large and small; falls, large and small	
Area to be submerged, marsh, swamp	
Land subject to controlled inundation, woodland	
Scrub, mangrove	
Orchard, vineyard	

A pamphlet describing topographic maps is available to request.

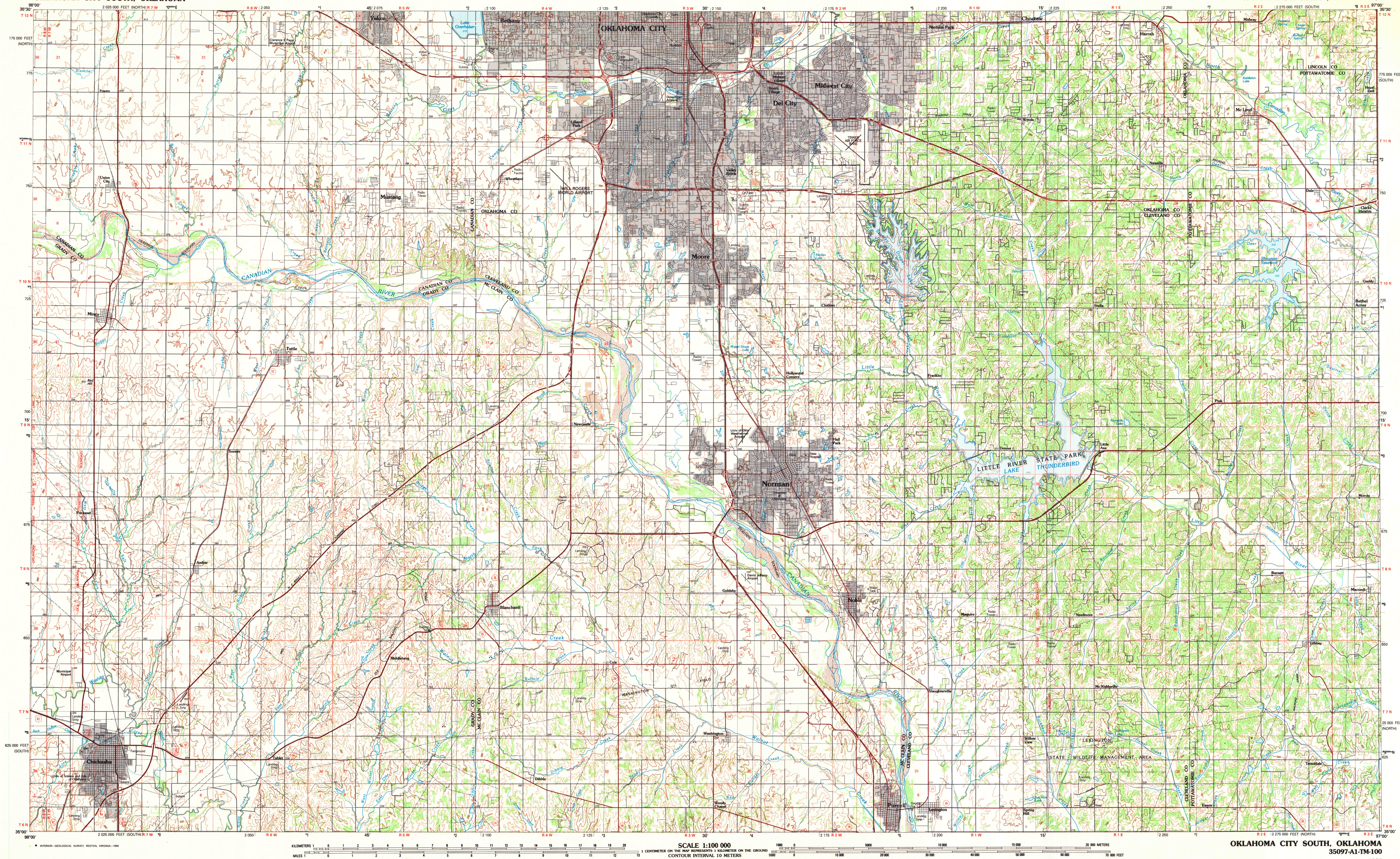
SET

BOC-94.02

1985

OKLAHOMA CITY SOUTH, OKLAHOMA

30 X 60 MINUTE SERIES (TOPOGRAPHIC)



OKLAHOMA CITY SOUTH, OKLAHOMA
35097-A1-TM-100
1985