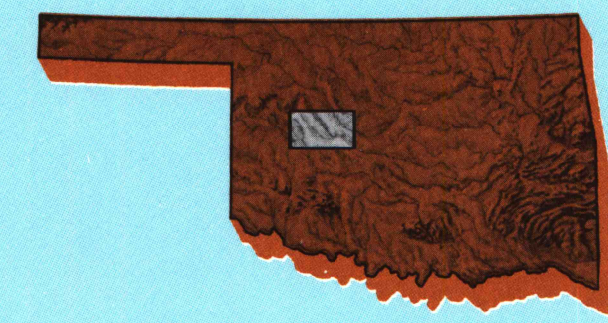


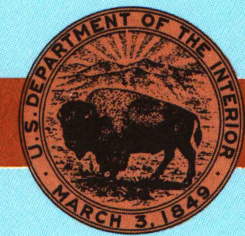
Watonga  
OKLAHOMA

1:100 000-scale metric  
topographic map



30 X 60 MINUTE QUADRANGLE  
SHOWING

- Contours and elevations in meters
- Highways, roads and other manmade structures
- Water features
- Woodland areas
- Geographic names



GEOLOGICAL SURVEY

1985

Produced by the United States Geological Survey

Compiled from USGS 1:24 000 and 1:62 500-scale  
topographic maps dated 1962-1983. Planimetry revised  
from aerial photographs taken 1981 and other source data.  
Revised information not field checked.  
Map edited 1985.

Projection and 10 000-meter grid, zone 14  
Universal Transverse Mercator  
25 000-foot grid ticks based on Oklahoma coordinate  
system, north and south zones. 1927 North American Datum  
To place on the predicted North American Datum 1983 move  
the projection lines 2 meters south and 31 meters east.  
There may be private inholdings within the boundaries of the  
National or State reservations shown on this map.

CONTOUR INTERVAL 10 METERS  
NATIONAL GEODETIC VERTICAL DATUM OF 1929  
ELEVATIONS SHOWN TO THE NEAREST METER

THIS MAP COMPLIES WITH NATIONAL MAP ACCURACY STANDARDS

CONVERSION TABLE		DECLINATION DIAGRAM	ADJOINING MAPS			
Meters	Feet		1	2	3	4
1	3.2808		1	2	3	4
2	6.5617		5	6	7	8
3	9.8425					
4	13.1234					
5	16.4042					
6	19.6850					
7	22.9659					
8	26.2467					
9	29.5276					
10	32.8084					
To convert meters to feet multiply by 3.2808		UTM grid convergence (GM) and 1985 magnetic declination (MD) at center of map Diagram is approximate				
To convert feet to meters multiply by 0.3048						

FOR SALE BY U. S. GEOLOGICAL SURVEY, DENVER, COLORADO 80225  
OR RESTON, VIRGINIA 22092

A.H. ROBINSON  
MAP LIBRARY  
JUL 19 1990  
U.S. Regional  
Depository Copy  
DO NOT DISCARD  
University of Wisconsin

Topographic Map Symbols

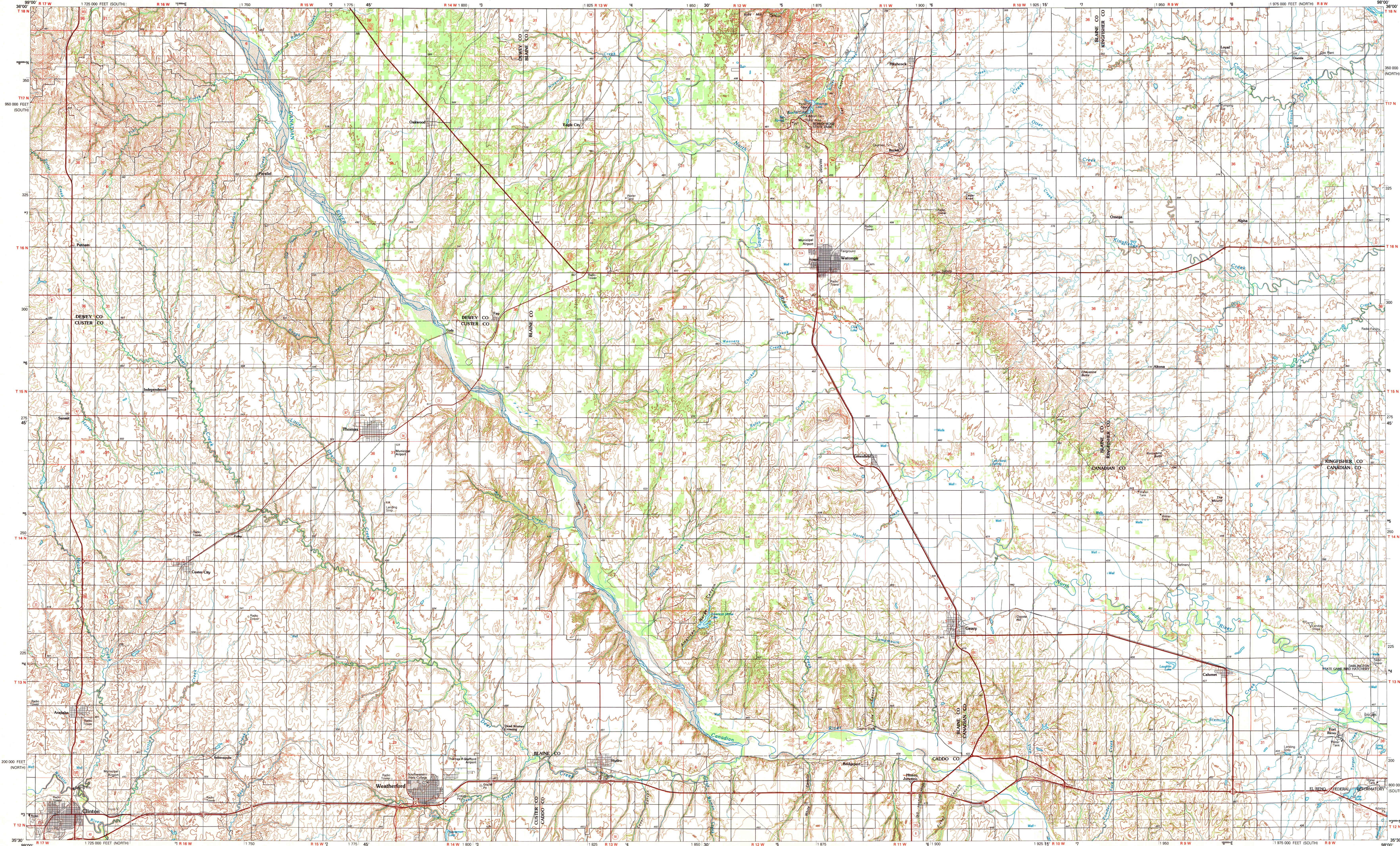
Primary highway, hard surface	
Secondary highway, hard surface	
Light duty road, principal street, hard or improved surface	
Other road or street, trail	
Route marker: Interstate, U. S., State	
Railroad: standard gauge, narrow gauge	
Bridge: overpass, underpass	
Tunnel: road, railroad	
Built up area, locality, elevation	
Airport: landing field; landing strip	
National boundary	
State boundary	
County boundary	
National or State reservation boundary	
Land grant boundary	
U. S. public lands survey: range, township; section	
Railway: boundary; section line; protected	
Power transmission line; pipeline	
Dam; dam with lock	
Cemetery; building	
Witchcraft; water well; spring	
Mine shaft; salt or gas; mine, quarry; gravel pit	
Campground; picnic area; U. S. location monument	
Ruin; cliff dwelling	
Disturbed surface: strip mine, lava, sand	
Contours: index; intermediate; supplementary	
Bathymetric contours: index; intermediate	
Stream, lake: perennial; intermittent	
Rapids, large and small; falls, large and small	
Area to be submerged; marsh, swamp	
Land subject to controlled inundation; woodland	
Scrub; mangrove	
Orchard; vineyard	

A pamphlet describing topographic maps is available on request

35098-E1-TM-100

WATONGA, OKLAHOMA

30 X 60 MINUTE SERIES (TOPOGRAPHIC)



INTERIOR-GEOLOGICAL SURVEY, RESTON, VIRGINIA-1990

WATONGA, OKLAHOMA  
35098-E1-TM-100