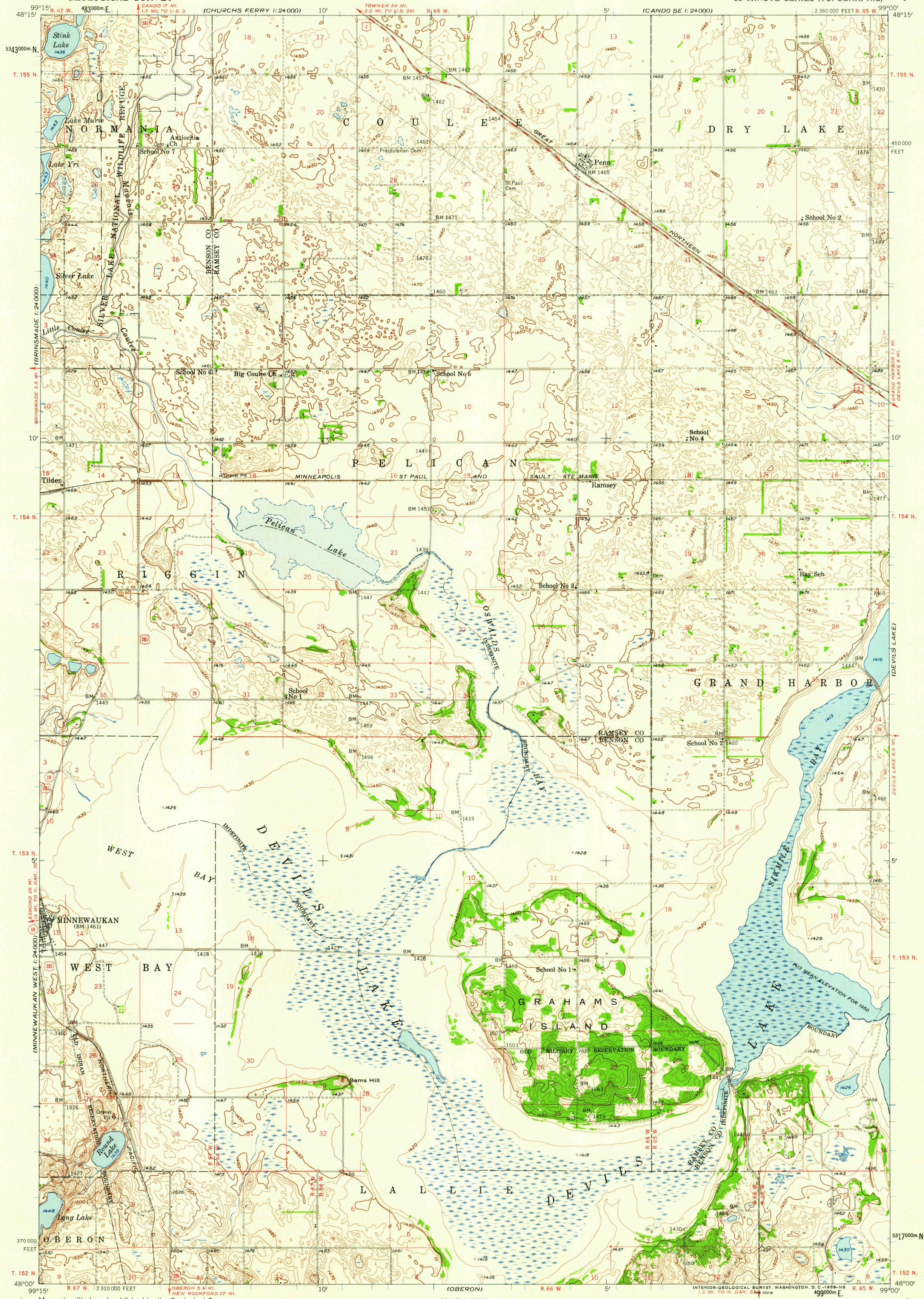


UNITED STATES
DEPARTMENT OF THE INTERIOR
GEOLOGICAL SURVEY

GRAHAMS ISLAND QUADRANGLE
NORTH DAKOTA
15 MINUTE SERIES (TOPOGRAPHIC)

(WEBSTER 1:24000)



Maped, edited, and published by the Geological Survey
Control by USGS and USCGS
Compiled in 1959 from 1:24 000-scale maps of Penn.
Tilden, Minnewaukan East, and Grahams Island
7.5 minute quadrangles, surveyed 1950
Culture and drainage in part compiled from aerial photographs
taken 1949. Topography by planetable surveys
Polyconic projection. 1927 North American datum
10,000-foot grid based on North Dakota coordinate system,
north zone
1000-meter Universal Transverse Mercator grid ticks,
zone 14, shown in blue

SCALE 1:62 500
CONTOUR INTERVAL 10 FEET
DATUM IS MEAN SEA LEVEL
THIS MAP COMPLIES WITH NATIONAL MAP ACCURACY STANDARDS
FOR SALE BY U. S. GEOLOGICAL SURVEY, DENVER 25, COLORADO OR WASHINGTON 25, D. C.
AND BY THE STATE WATER CONSERVATION COMMISSION, BISMARCK, NORTH DAKOTA
A FOLDER DESCRIBING TOPOGRAPHIC MAPS AND SYMBOLS IS AVAILABLE ON REQUEST

USGS
Historical Medium
Topographic Division
ROAD CLASSIFICATION
Unimproved dirt
Light duty
U. S. Route
State Route
This area also covered by 1:24 000-scale maps of
Penn, Tilden, Minnewaukan East, and Grahams Island
7.5 minute quadrangles, surveyed 1950
GRAHAMS ISLAND, N. DAK.
N 4800-W9900/15
1950

U.S.G.S.
FILE COPY
TOPOGRAPHIC DIVISION

SEP - 3 1959